



Rannoch Walk, Hemel Hempstead, HP2 6PG
Offers In Excess Of £400,000

Located in Rannoch Walk, Grovehill with picturesque views over the surrounding fields is this well presented terraced family home. Boasting three bedrooms, 18'8 living/dining room, fitted kitchen, downstairs cloakroom, office area, gas central heating, double glazing, front and rear gardens and off road parking.

Situated within easy reach of the local shops parks and schooling, Hemel Hempstead town centre with all of its shopping, restaurant, coffee shops and travel facilities and the M1, M25 and A41 road links.

Nestled in the charming area of Rannoch Walk, Grovehill, this well-presented three-bedroom terraced house offers a delightful family home with picturesque views over the surrounding fields. The property boasts a spacious 18'8 lounge/dining room, perfect for both relaxation and entertaining, alongside a fitted kitchen that caters to all your culinary needs.

The ground floor also features a convenient downstairs cloakroom and a dedicated office space, ideal for those who work from home or require a quiet area for study. The house is equipped with gas central heating and double glazing, ensuring warmth and comfort throughout the seasons.

Outside, you will find off-road parking, a valuable asset in this area, as well as front and rear gardens that provide a lovely outdoor space for children to play or for hosting summer gatherings and with the benefit of a insulated shed with light and power. This property is not only a comfortable living space but also a wonderful opportunity for families seeking a welcoming community in Hemel Hempstead. With its blend of practicality and charm, this terraced house is sure to appeal to a variety of buyers.

Entrance Hall



Downstairs Cloakroom



Lounge/Dining Room 18'8 max x 15'8 max (5.69m max x 4.78m max)



Fitted Kitchen 10'6 x 9'4 (3.20m x 2.84m)



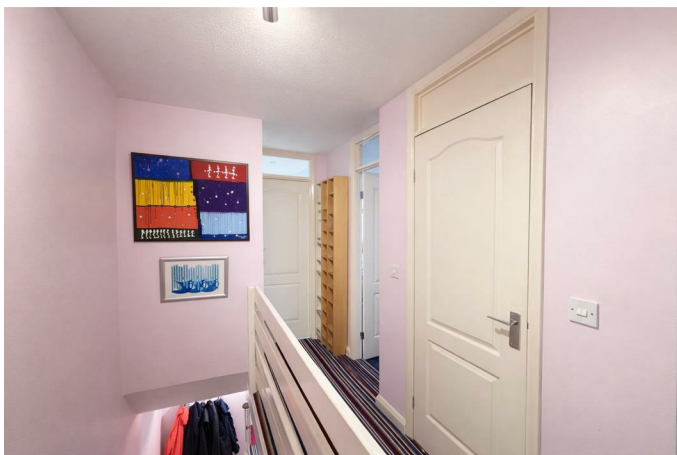
Office Area



Bedroom Two 11'9 x 9'2 (3.58m x 2.79m)



Landing



Bedroom Three 9'9 x 6'7 (2.97m x 2.01m)



Bedroom One 12'10 x 8'10 (3.91m x 2.69m)



Shower Room

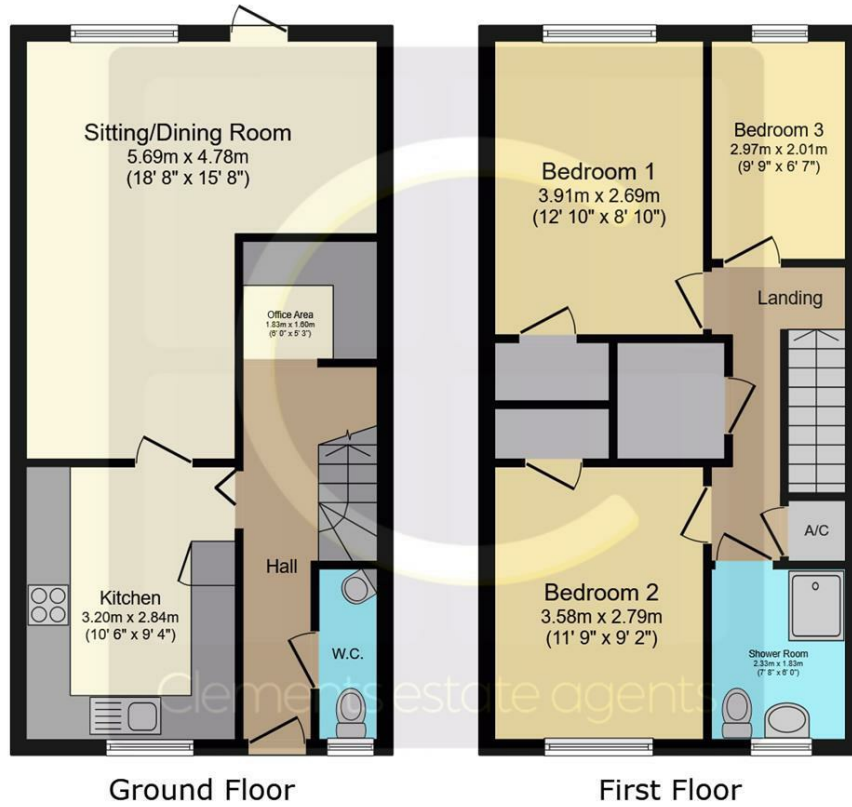


Front Garden

Rear Garden & Off Road Parking

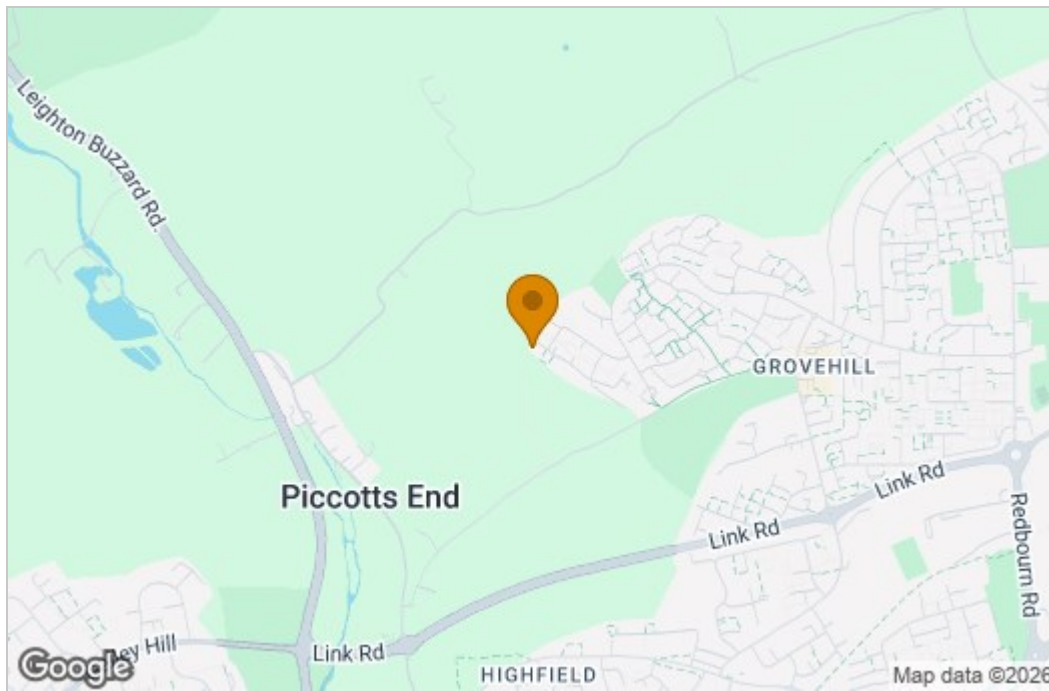


Floor Plan

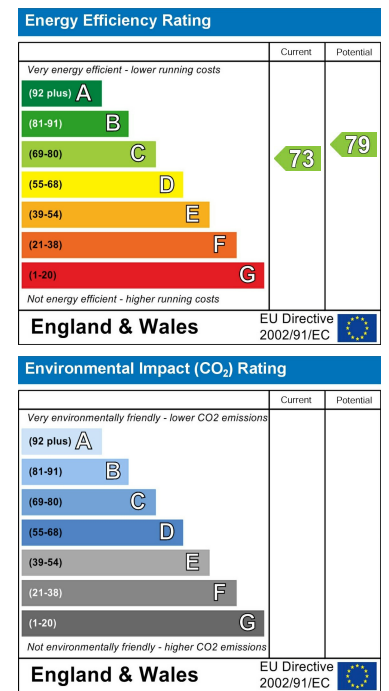


This floor plan is for illustrative purposes only. It is not drawn to scale. Any measurements, floor areas (including any total floor area), openings and orientations are approximate. No details are guaranteed, they cannot be relied upon for any purpose and do not form any part of any agreement. No liability is taken for any error, omission or misstatement. A party must rely upon its own inspection(s). Powered by www.Propertybox.io

Area Map



Energy Efficiency Graph



These particulars, whilst believed to be accurate are set out as a general outline only for guidance and do not constitute any part of an offer or contract. Intending purchasers should not rely on them as statements of representation of fact, but must satisfy themselves by inspection or otherwise as to their accuracy. No person in this firm's employment has the authority to make or give any representation or warranty in respect of the property.