



Gilda Crescent Road, Eccles

Manchester



Offers in Region of £500,000

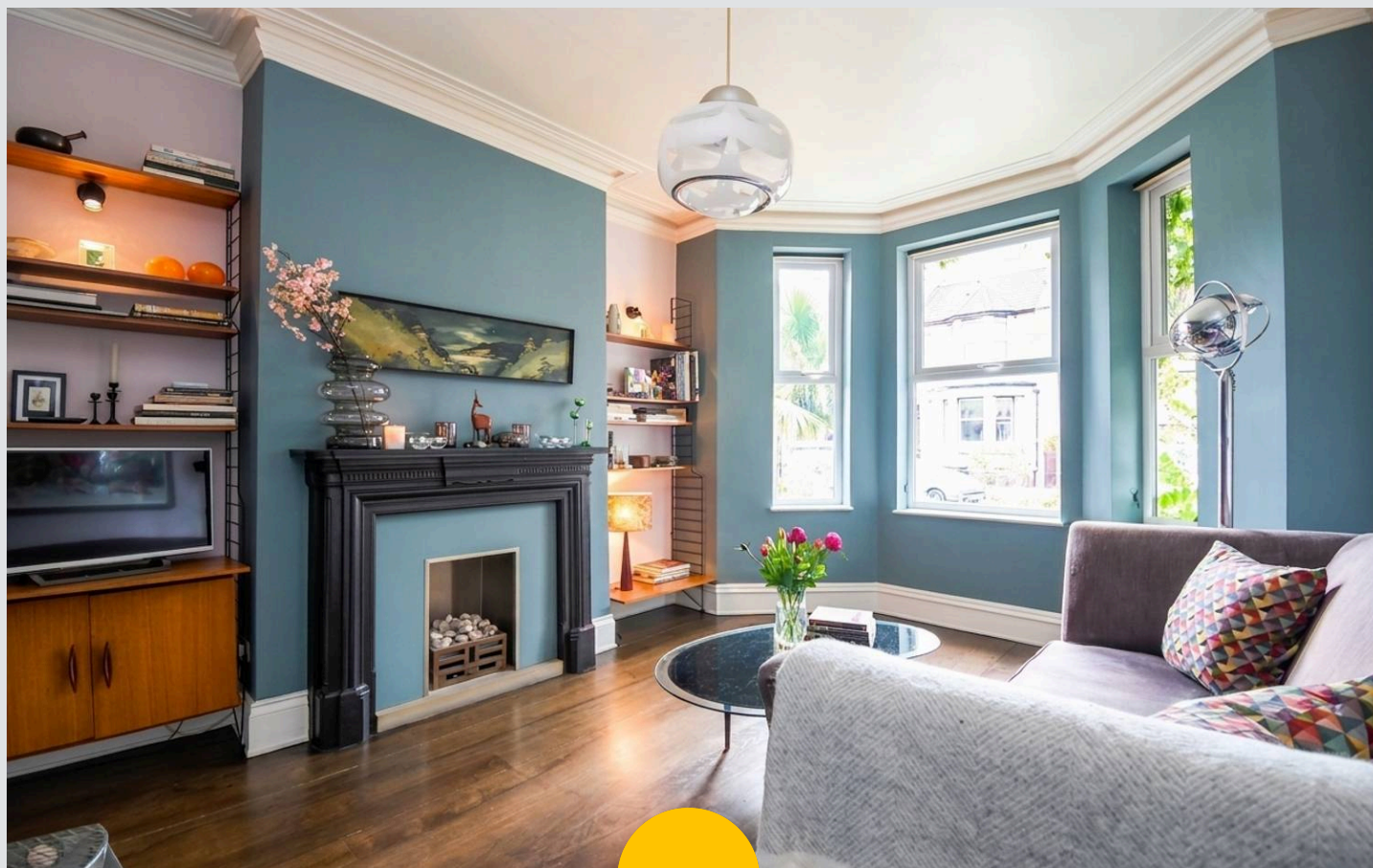
Gilda Crescent Road

Eccles, Manchester

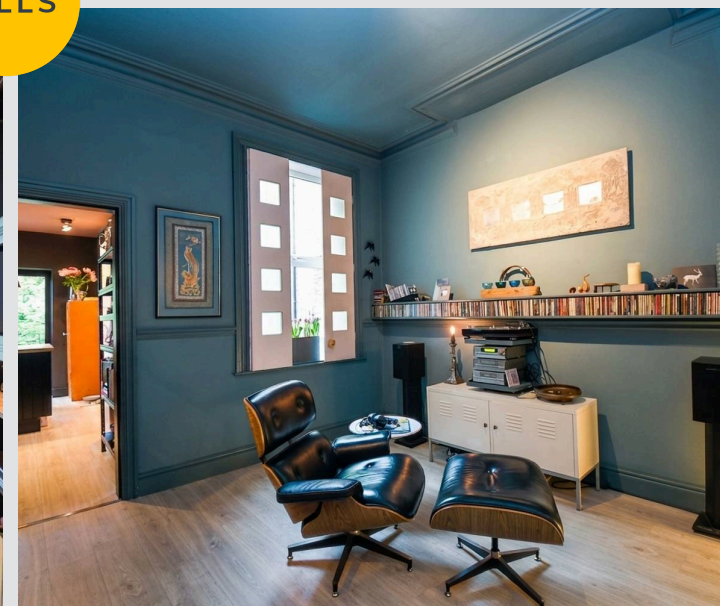
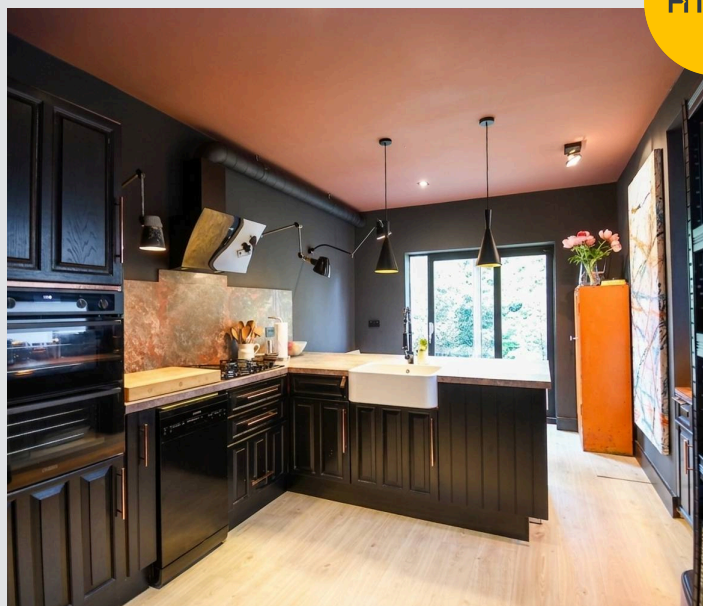
Spacious four bed terraced home over four floors in Ellesmere Park. Features two receptions, modern kitchen, cellar, and stylish shower room. Close to schools, transport, and Monton Village. Council Tax band: C

Tenure: Freehold

- Fabulous four bedroom terrace property laid across four floors border in the tree line streets of Ellesmere Park
- Bay fronted family lounge and second reception room
- Fitted kitchen and dining space opening out onto the private rear garden
- Four generously sized bedrooms
- Modern fitted shower room feature large walk-in shower
- Two chamber cellar currently used a storage offering versatile spaces
- Beautiful mature rear garden with the Gilder Brook streaming through
- Catchment for sought after schooling
- The perfect family home surrounded by a plethora of amenities and transport links



HILLS



Entrance Hallway

Reception Room One

15' 2" x 12' 3" (4.62m x 3.73m)

Reception Room Two

11' 8" x 11' 1" (3.56m x 3.38m)

Kitchen

15' 9" x 11' 4" (4.80m x 3.45m)

Cellar

Chamber One : 11' 5" x 11' 2"

Chamber Two : 15' 3" x 12' 8"

Chamber Three : 3' 6" x 11' 9"

Landing

Bedroom Two

16' 5" x 12' 4" (5.00m x 3.76m)

Bedroom Three

12' 0" x 11' 1" (3.66m x 3.38m)

Bedroom Four

10' 2" x 10' 0" (3.10m x 3.05m)

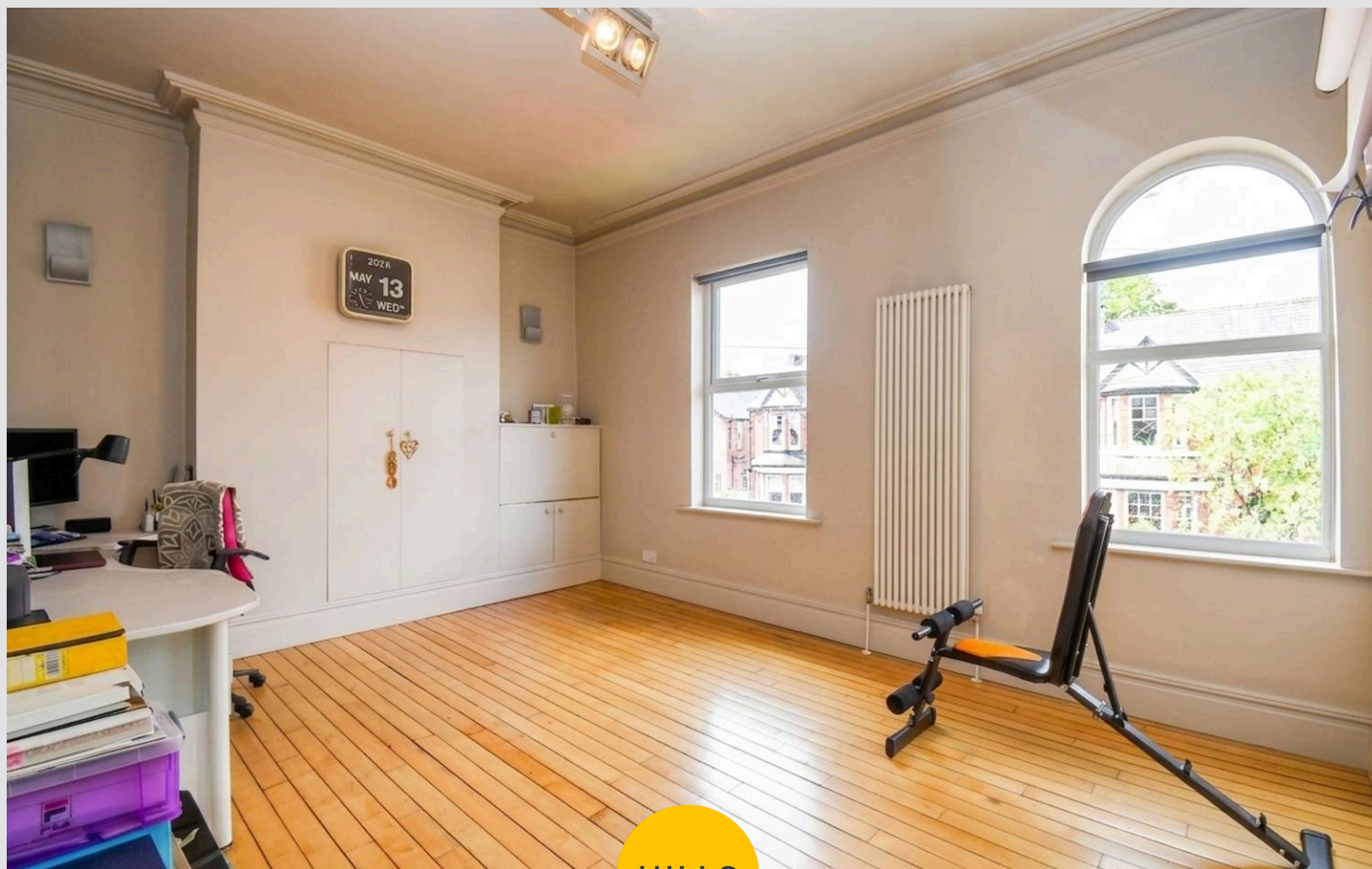
Shower Room

8' 8" x 6' 9" (2.64m x 2.06m)

Landing

Bedroom One

21' 1" x 10' 9" (6.43m x 3.28m)

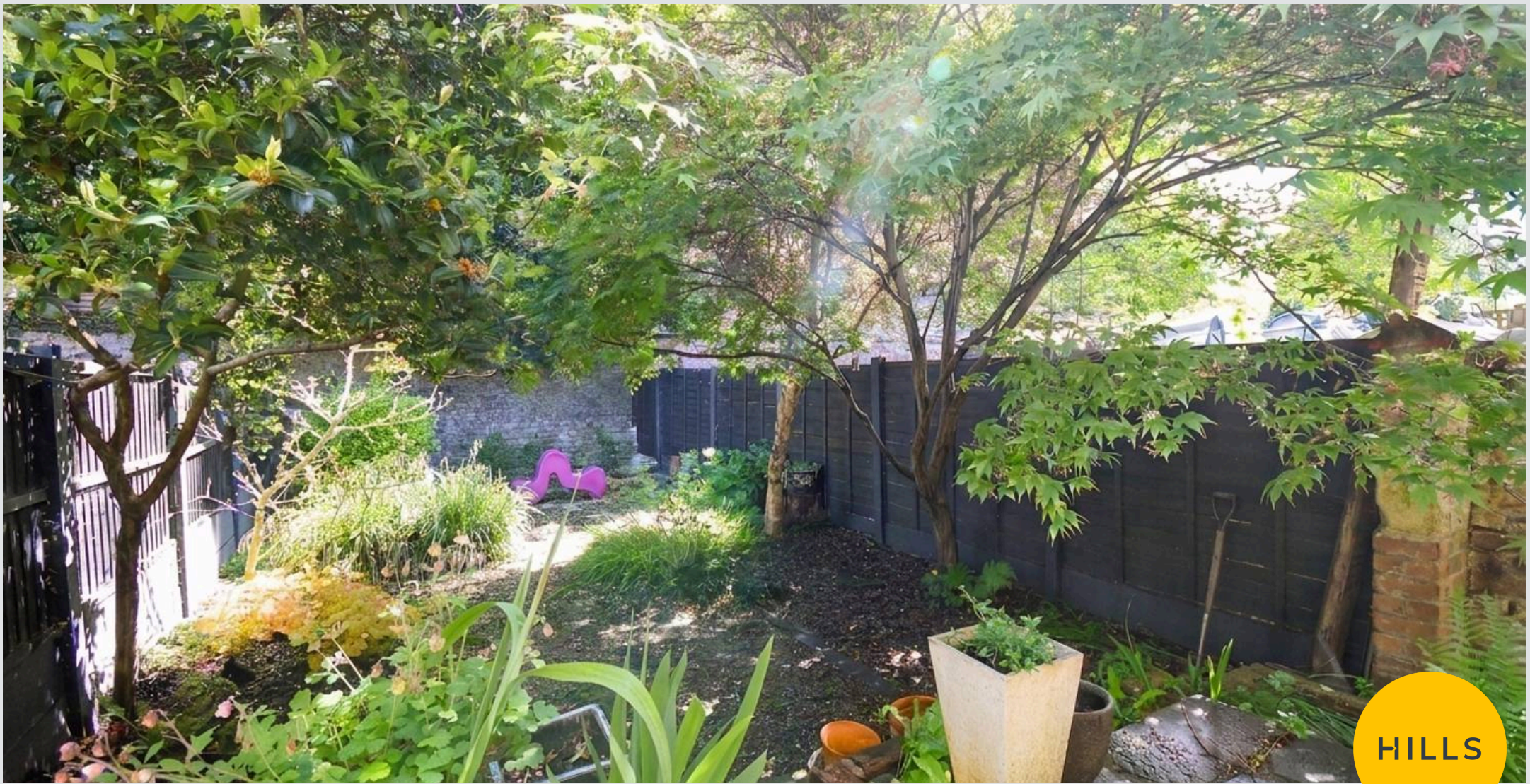




HILLS







Hills | Salfords Estate Agent

Hills Residential, Sentinel House Albert Street – M30 0SS

0161 707 4900

sales@hills.agency

www.hills.agency/



By law, we are required to conduct anti-money laundering checks on all potential buyers and sellers. In line with HMRC guidelines, our trusted partner, Coadjute, will securely manage these checks on our behalf. A non-refundable fee of £45 + VAT per person will apply, and Coadjute will handle the payment. Once an offer is accepted, Coadjute will send a secure link for you to complete the biometric checks. These checks must be completed before we can send the memorandum of sale to all parties. PLEASE NOTE: The Agent has not tested any equipment, fixtures, fittings or services so cannot verify that they are in working order or fit for the purpose. References to the properties tenure are based on information supplied by the seller. You are advised to check the availability of this property before travelling any distance to view. Every effort has been made to ensure these particulars are correct and not misleading but their accuracy is not guaranteed nor do they form part of any contract.