



DANIEL ARCHER

exp[®] UK

@ daniel.archer@exp.uk.com

🌐 danielarcher.exp.uk.com

☎ 07792 947 756

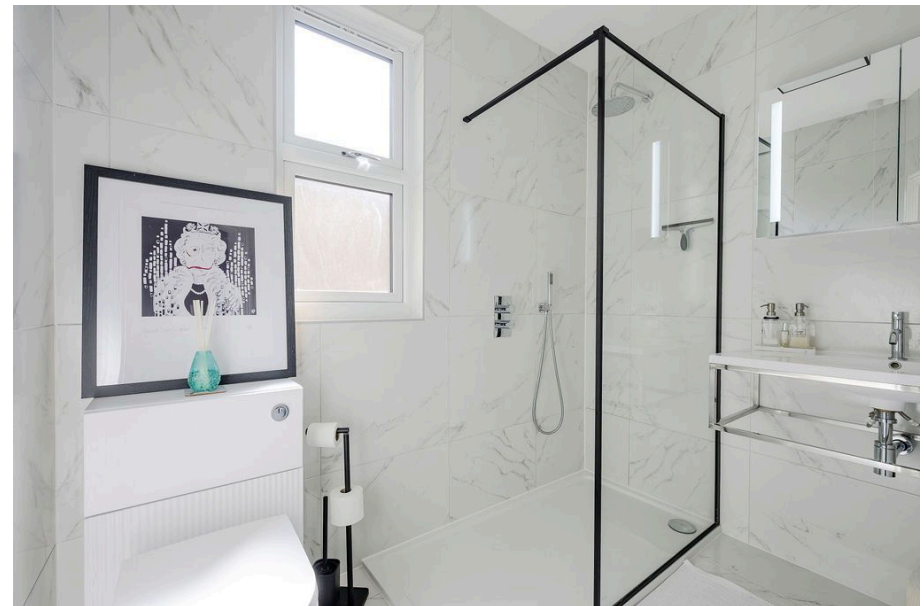
Kingston Road, Raynes Park, SW20

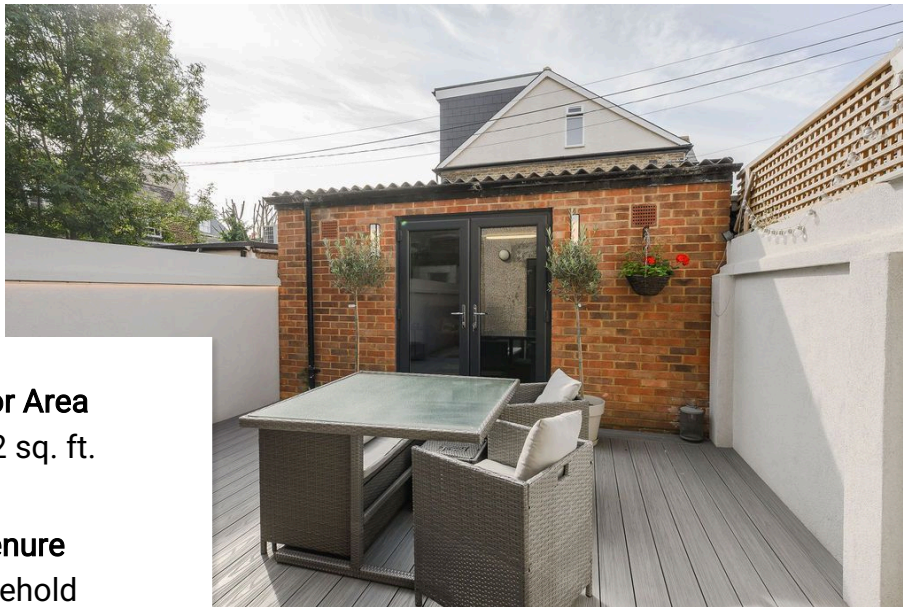
Guide Price £950,000

3 2



Well presented three bedroom terraced family home (1,402 Sq.Ft) with decked private garden and former garage now converted into a fantastic and versatile home office/gym with store area, superbly situated close to Raynes Park and Wimbledon Chase stations. Offering bright, well proportioned accommodation, beautifully appointed with stylish interiors, neutral décor and high quality finish throughout. With tremendous scope to increase space into the loft floor subject to consents. Property Ref; DA0587



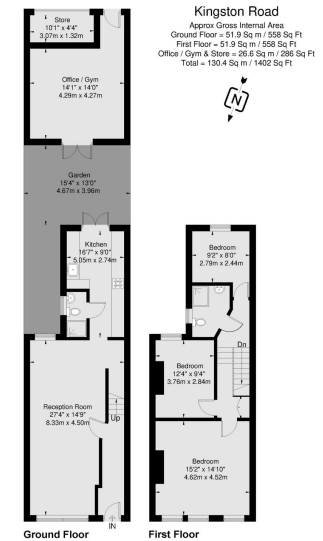


Floor Area
1402 sq. ft.

Tenure
Freehold

Service Charge
£0 per annum

Ground Rent
£0 per annum



Viewed 05/2024
Viewed 05/2024
While every effort has been made to ensure the accuracy of this floor plan, measurements of doors, windows and rooms are approximate and not responsible for any error or omission. This illustration is for identification purposes only. Not drawn to scale, unless stated. Dimensions shown are to the nearest 2" and are to the points indicated by the arrow heads.

Energy Efficiency Rating		
	Current	Potential
Very energy efficient - lower running costs		
(92 plus) A		
(81-91) B		84
(69-80) C	69	
(55-68) D		
(39-54) E		
(21-38) F		
(1-20) G		
Not energy efficient - higher running costs		
England & Wales	EU Directive 2002/91/EC	