



Connells

Four Winds Out Elmstead Lane
Barham CANTERBURY

Four Winds Out Elmstead Lane Barham CANTERBURY CT4 6PG

for sale offers in excess of
£860,000



Property Description

A beautifully presented three-bedroom detached home, finished to a high standard throughout and set in a sought after and very peaceful location with stunning countryside views.

This charming property offers spacious and well-designed living accommodation, ideal for families or those looking to enjoy a quieter lifestyle.

The home features bright and stylish interiors with quality finishes in every room, creating a warm and welcoming atmosphere. The living spaces flow well and provide a perfect balance of comfort and practicality. The kitchen, finished to a high standard boasts an array of fitted units, breakfast bar and large windows letting in plenty of natural light. A separate utility room provides a useful space with extra storage and side access, as well as an additional dry cellar room for more storage.

A lovely bright dining area has double doors leading to the main living room with fire place, log burner and surround and a bay window with double doors to the garden. A secondary living room leads through to the conservatory overlooking the rear garden.

Externally, the property benefits from ample parking and generous gardens, offering plenty of outdoor space for relaxing, entertaining, or enjoying the surrounding rural outlook. The gardens take full advantage of the beautiful countryside views, making this a truly special setting.

A wonderful opportunity to acquire a detached home combining modern living with scenic surroundings.



Entrance Hall

Front door, tiled floor, radiator, storage cupboard, window, stairs to first floor

Cloakroom

WC, wash hand basin, window, tiled floor

Kitchen

20' 6" x 11' 11" (6.25m x 3.63m)

Modern fitted kitchen with matching wall and base units, sink and drainer. Space for fridge freezer, dishwasher, range cooker, breakfast bar. Windows and floor to ceiling window. Tiled flooring.

Dining Room

14' 3" x 9' 11" (4.34m x 3.02m)

Tiled flooring, radiator, double doors to living room and second lounge.

Main Living Room

18' 10" in to bay x 15' 6" (5.74m in to bay x 4.72m)

Bay window with double doors to the garden, windows to rear. Fire place and surround with log burner. solid oak flooring, two radiators.

Secondary Living Room

13' 11" x 11' 11" (4.24m x 3.63m)

Double doors to dining room and double doors to conservatory. Two windows, tiled flooring

Conservatory

16' 3" x 8' 6" (4.95m x 2.59m)

Tiled floor, windows, double doors to garden

Utility Room

17' 7" x 4' 1" (5.36m x 1.24m)

Matching wall and base units, work surface over, sink and drainer. Side door, window, space for fridge, tiled floor.

Landing

Carpet area, stairs from ground floor, stairs to second floor

Bedroom Three

12' 10" x 12' 1" (3.91m x 3.68m)

Carpet, radiator, window, plenty of built in cupboard space.

Bedroom One

12' 2" x 10' 1" (3.71m x 3.07m)

Carpet, radiator, window

En Suite To Bedroom One

Stand alone bath, shower cubicle, WC and wash hand basin with vanity storage. Heated towel rail, central heating boiler cupboard, tiled floor and part tiled walls. Windows

Family Bathroom

Stand alone bath, shower cubicle, WC and wash hand basin with vanity storage. Heated towel rail, tiled floor and part tiled walls. Windows

Bedroom Two (top Floor)

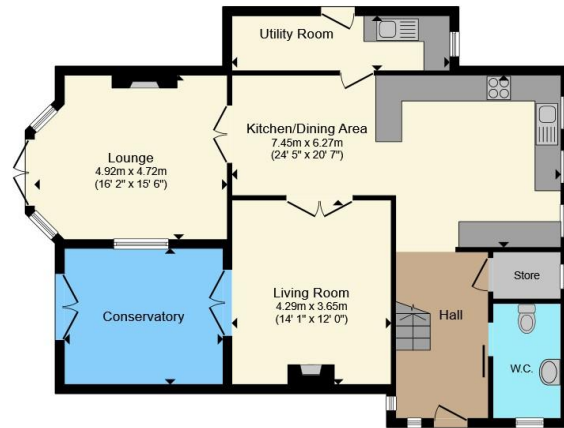
16' 10" max x 14' 3" max (5.13m max x 4.34m max)

'L' shaped room, carpet, eaves storage and further built in storage. Two velux windows and two dorma windows. Two radiators.

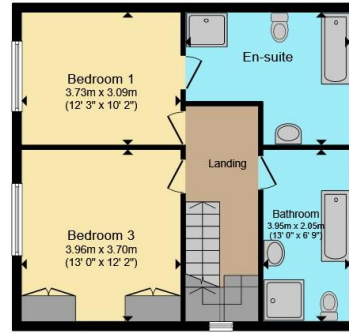




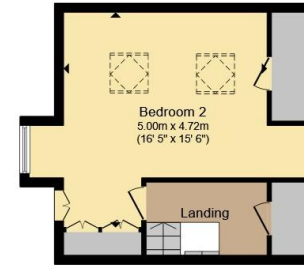




Ground Floor



First Floor



Second Floor

Total floor area 182.8 m² (1,968 sq.ft.) approx

This floor plan is for illustrative purposes only. It is not drawn to scale. Any measurements, floor areas (including any total floor area), openings and orientation are approximate. No details are guaranteed, they cannot be relied upon for any purpose and they do not form part of any agreement. No liability is taken for any error, omission or misstatement. A party must rely upon its own inspection(s). Powered by www.propertybox.io



To view this property please contact Connells on

T 01227 764 720
E canterbury@connells.co.uk

29-30 Watling Street
 CANTERBURY CT1 2UD

EPC Rating: E Council Tax
 Band: F

Tenure: Freehold

view this property online connells.co.uk/Property/CBY406975



1. MONEY LAUNDERING REGULATIONS Intending purchasers will be asked to produce identification documentation at a later stage and we would ask for your co-operation in order that there will be no delay in agreeing the sale. 2. These particulars do not constitute part or all of an offer or contract. 3. The measurements indicated are supplied for guidance only and as such must be considered incorrect. Potential buyers are advised to recheck measurements before committing to any expense. 4. We have not tested any apparatus, equipment, fixtures, fittings or services and it is in the buyers interest to check the working condition of any appliances.

Connells Residential is registered in England and Wales under company number 1489613, Registered Office is Cumbria House, 16-20 Hockliffe Street, Leighton Buzzard, Bedfordshire, LU7 1GN. VAT Registration Number is 500 2481 05.

See all our properties at www.connells.co.uk | www.rightmove.co.uk | www.zoopla.co.uk

Property Ref: CBY406975 - 0004