

FREEHOLD



House - Semi-Detached (EPC Rating:)

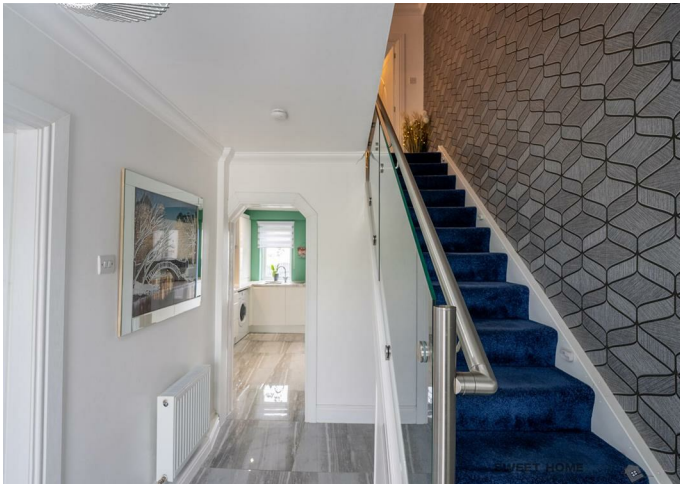
20 BARRA AVENUE, COATBRIDGE, ML5 5JJ

Offers over

£204,995

FEATURES

- Extended Semi-detached house
- 4 spacious bedrooms
- Patio doors to garden
- Artificial grass garden
- 2 modern bathrooms
- Ground floor bedroom
- Driveway and gated access
- Located in Coatbridge



**SWEET
HOME**



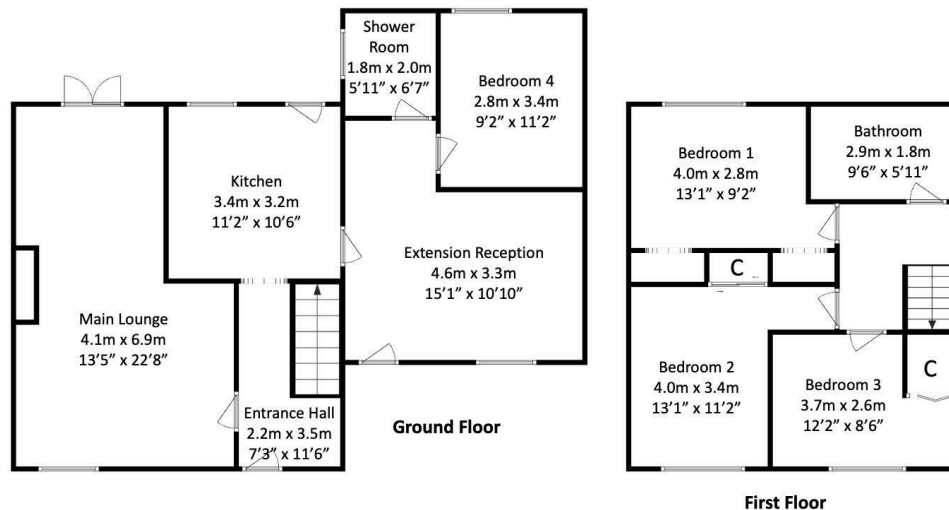
4 Bedroom House - Semi-Detached located in Coatbridge

Caroline Morrison of Sweet Home Scotland, is proud to bring to the market, this beautifully extended semi-detached home located on the desirable Barra Avenue in Coatbridge. Spanning an impressive 1323.96 square feet, this property offers a perfect blend of space and comfort, making it an ideal choice for families or those seeking a bit more room to breathe.

Upon entering, you are greeted by a welcoming hallway. The open-plan lounge and dining area is perfect for entertaining, featuring patio doors that open out to the rear garden, allowing for a seamless flow between indoor and outdoor living. The well-appointed kitchen is conveniently located on the ground floor. The extension provides a second reception room, bedroom and a family shower room, providing practical living arrangements.

The upper floor boasts three generously sized bedrooms, ensuring ample space for family members or guests. A family bathroom completes this level, offering convenience and comfort for all.

Externally, the property features a drive to the side, providing off-street parking, and access to the rear garden via secure gates. The outdoor space includes patio areas and artificial grass, creating a low-maintenance garden that is perfect for relaxation or entertaining.



Call us on

01236 677500

sales@sweet-home.co.uk

<https://sweet-home.co.uk/>

Council Tax Band

D

Energy Efficiency Rating		Current	Potential
<i>Very energy efficient - lower running costs</i>			
(92 plus)	A		
(81-91)	B		
(69-80)	C		
(55-68)	D		
(39-54)	E		
(21-38)	F		
(1-20)	G		
<i>Not energy efficient - higher running costs</i>			
Scotland		EU Directive	
		2002/91/EC	

Agents Note: Whilst every care has been taken to prepare these particulars, they are for guidance purposes only. All measurements are approximate and are for general guidance purposes only and whilst every care has been taken to ensure their accuracy, they should not be relied upon and potential buyers are advised to recheck the measurements.

**SWEET
HOME**

