



## ALDEBURGH STREET, SE10

£350,000

First floor Victorian maisonette

Two bedrooms

Share of freehold

Direct access to private garden

Close to Jubilee line tube

Energy rating: c



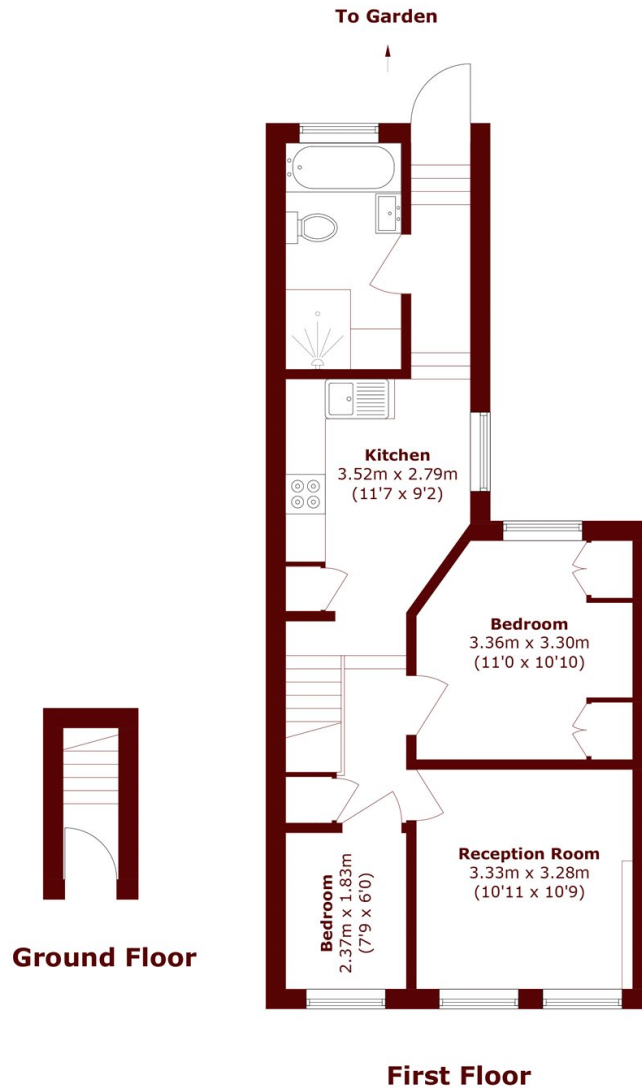
# ABOUT THE PROPERTY

A beautifully presented first floor Victorian maisonette boasting two bedrooms and a contemporary bathroom. The spacious kitchen/diner creates an ideal setting for everyday living and entertaining, while the private rear garden offers a tranquil outdoor retreat. With its own front door and the added benefit of a share of freehold, this home delivers both privacy and long-term security.

Westcombe Park mainline station is a short walk away, providing fast links into central London. The property is also within walking distance of the O2 Centre, where you'll find North Greenwich underground station (Jubilee line), along with an array of shops, restaurants and entertainment options.



# STEP INSIDE ALDEBURGH STREET



Total area (approx.): 54.5 sq. m (586.6 sq. ft)

Greenwich  
020 8312 8312

Energy Rating: C We aim to make our particulars both accurate and reliable. However, they are not guaranteed; nor do they form part of an offer or contract. If you require clarification on any points then please contact us, especially if you're traveling some distance to view. Please note that appliances and heating systems have not been tested and therefore no warranties can be given as to their good working order

MARSH &  
PARSONS