



Hardington

Belmont Street, NW1

Guide Price £390,000

Located on the sixth floor of this purpose built block, this two-bedroom apartment offers excellent potential for a purchaser looking to refurbish and modernise a property. The property comprises an entrance hall, a bright reception room with access to a private balcony, a separate kitchen, two good-sized bedrooms, and a bathroom.

CHESTERTONS



Hardington

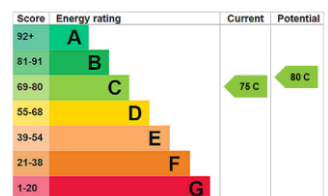
Belmont Street, NW1

- Purpose Built Block
- Two Bedrooms
- Balcony
- Excellent Location
- Modernisation Required



Belmont Street is the perfect location to explore the fantastic amenities of Camden Town, Chalk Farm, Belsize Park and Primrose Hill. Transport links are excellent with Chalk Farm underground around the corner and Kentish Town West Overground Station in close proximity.

Tenure: Leasehold with 89 years remaining
Service Charge: £2,301 Per Annum
Ground Rent: £10 per annum
Local Authority: Camden
Council Tax Band: B

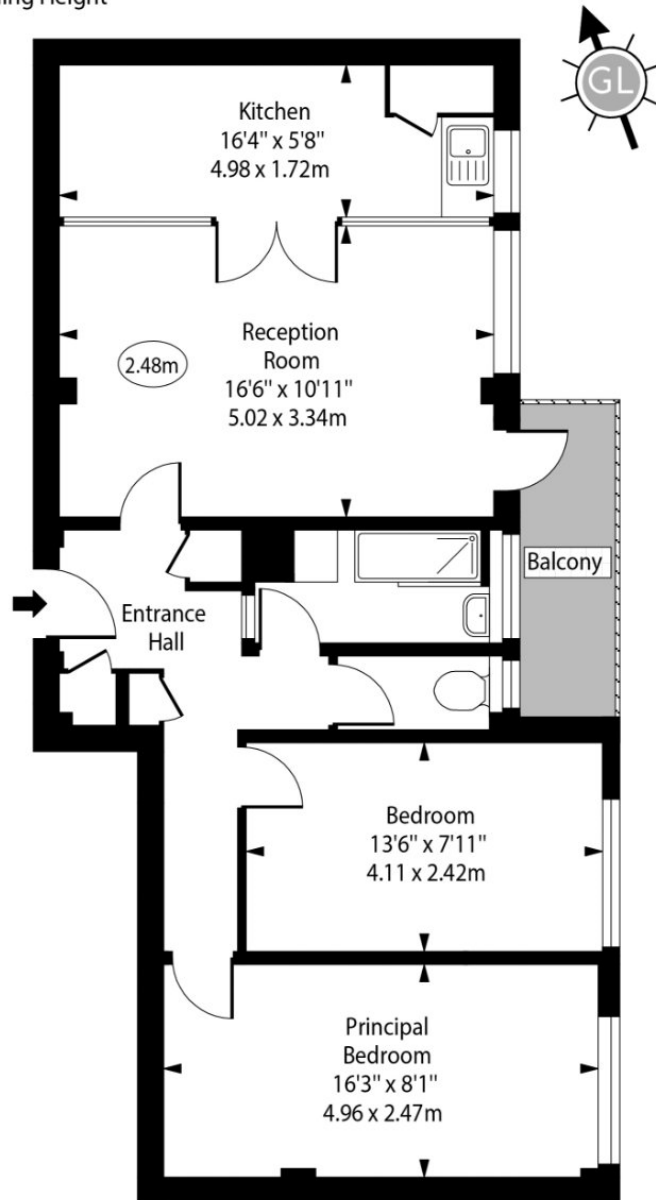


Chestertons Camden & Kentish Town Sales

99-101 Parkway
Camden
London
NW1 7PP
camden@chestertons.co.uk
020 7267 2053
chestertons.co.uk

Hardington, Belmont Street

○ - Ceiling Height



Sixth Floor

Gross Internal Area - 688 Sq Ft - 63.92 Sq M

Approx Gross Internal Area 688 Sq Ft - 63.92 Sq M

Every attempt has been made to ensure the accuracy of the floor plan shown. However, all measurements, fixtures, fittings, and data shown are approximate interpretations and for illustrative purposes only. Measured according to the RICS. Not To Scale.

www.goldlens.co.uk
Ref. No. 030645.1D

