







14 Tupton Road

Clay Cross • Chesterfield • S45 9FL

£110,000

SHARED OWNERSHIP – £110,000 for 50% This well-presented and modern three-bedroom end-terraced home is located on the popular Egstow Park development. Close to shops, cafés and everyday amenities, with excellent access to the M1 and just a 10–15 minute drive to Chesterfield Town Centre, it's an ideal choice for couples, starter families and professionals. On entering the property, the hallway leads to the ground-floor WC on the right, before opening into the spacious lounge-diner. This bright, open-plan living space features patio doors leading out to the rear garden. The kitchen sits just off the dining area, positioned at the front of the property, and includes shaker-style storage cupboards, integrated appliances and a gas hob. Upstairs, the principal bedroom faces the front and benefits from fitted wardrobes and an en-suite with shower, basin and toilet. Bedroom two is another generous double overlooking the rear garden, while bedroom three is a single room ideal as a study, dressing room or nursery, complete with a fitted storage cupboard. The family bathroom includes a three-piece suite with shower over bath, basin and toilet. Externally, the property offers off-road parking to the front, with a pathway leading to the side. To the rear is a fully landscaped, tiered garden. The top tier features a patio seating area and a large lawn. while the lower tier provides an additional lawned space and a good-sized summerhouse.





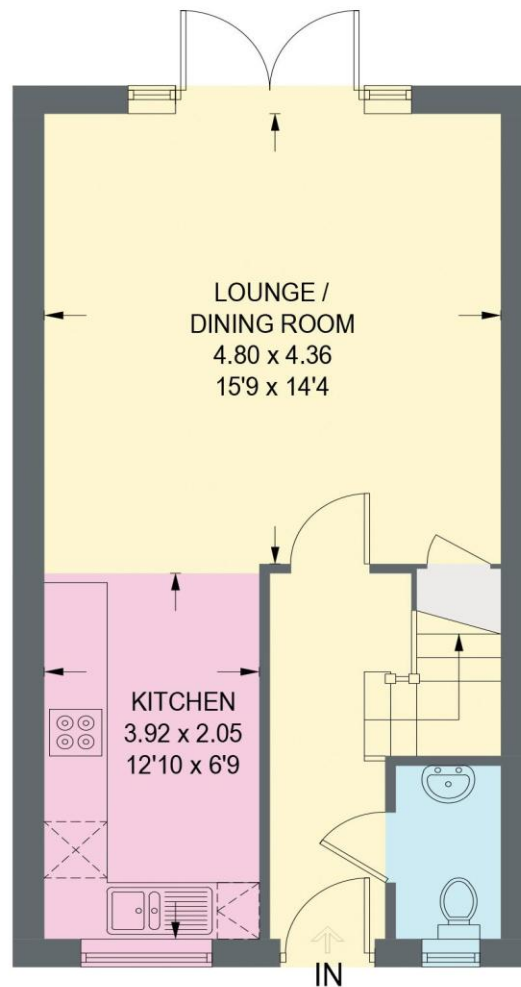
- Modern Three Bedroom End Terrace
- Principal Bedroom w/ Fitted Wardrobes & En-Suite
- Three Piece Bathroom
- Large Lounge-Diner w/ Patio Doors
- Kitchen w/ Fitted Storage Cupboards & Integrated Appliances
- Off Road Parking
- Close To Amenities, Shops & M1
- 50% Shared Ownership - Opportunity Available To Buy 100%
- Private Rear Garden w/ Summerhouse
- EPC Rating: TBC / Council Tax Band C



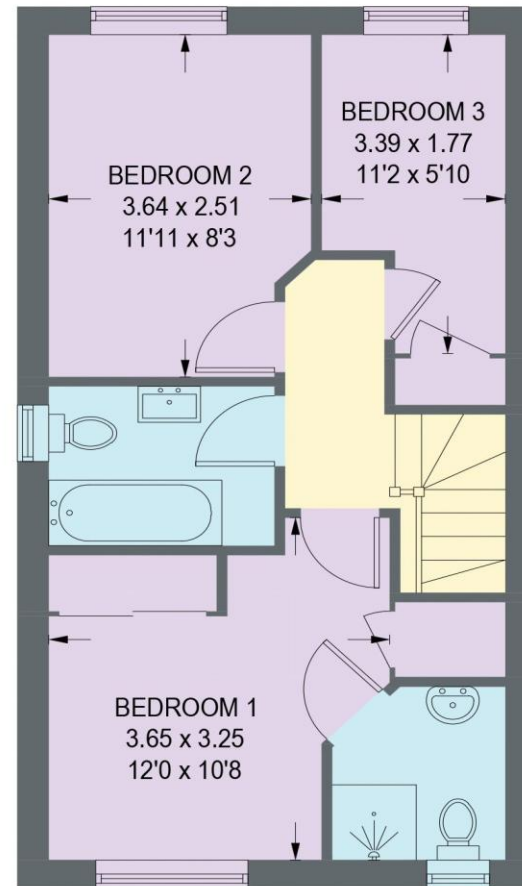


14 TUPTON ROAD

APPROXIMATE GROSS INTERNAL AREA = 77.0 SQ M / 828.4 SQ FT



GROUND FLOOR
38.5 SQ M / 413.9 SQ FT



FIRST FLOOR
38.5 SQ M / 414.5 SQ FT

Illustration for identification purposes only, measurements are approximate, not to scale. (ID1287457)



haus

31 West Bars, Chesterfield, S40 1AG
chesterfield@haushomes.co.uk haushomes.co.uk

01246 380 535