



Hillside, NW10

£350,000

A spacious two double bedroom flat recently renovated, with a south-facing garden. The property benefits from having a large reception room to the front with a bay window, a separate kitchen at the rear leading onto the garden, en suite bathroom, and built-in storage throughout.

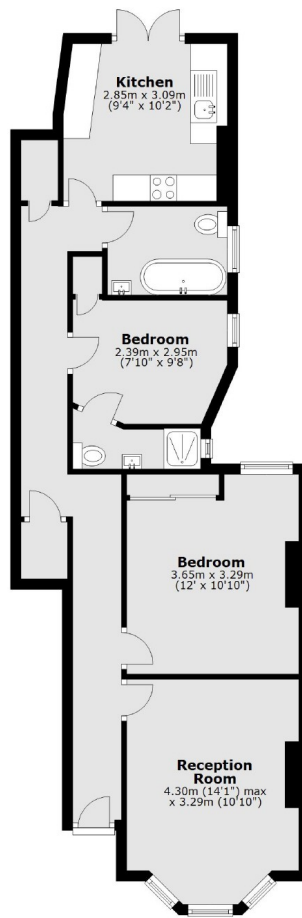
Hillside is situated near to the shops, cafes and amenities on Craven Park and Harlesden, with transport links including Harlesden (Bakerloo & Overground) and Stonebridge Park (Bakerloo & Overground) located within half a mile.

Features

- Two Double Bedrooms
- Two Bathrooms
- South-Facing Garden
- Separate Kitchen
- Storage Throughout
- Close To Local Amenities

Hillside, London, NW10

Ground Floor



Total area: approx. 64.7 sq. metres (696.4 sq. feet)