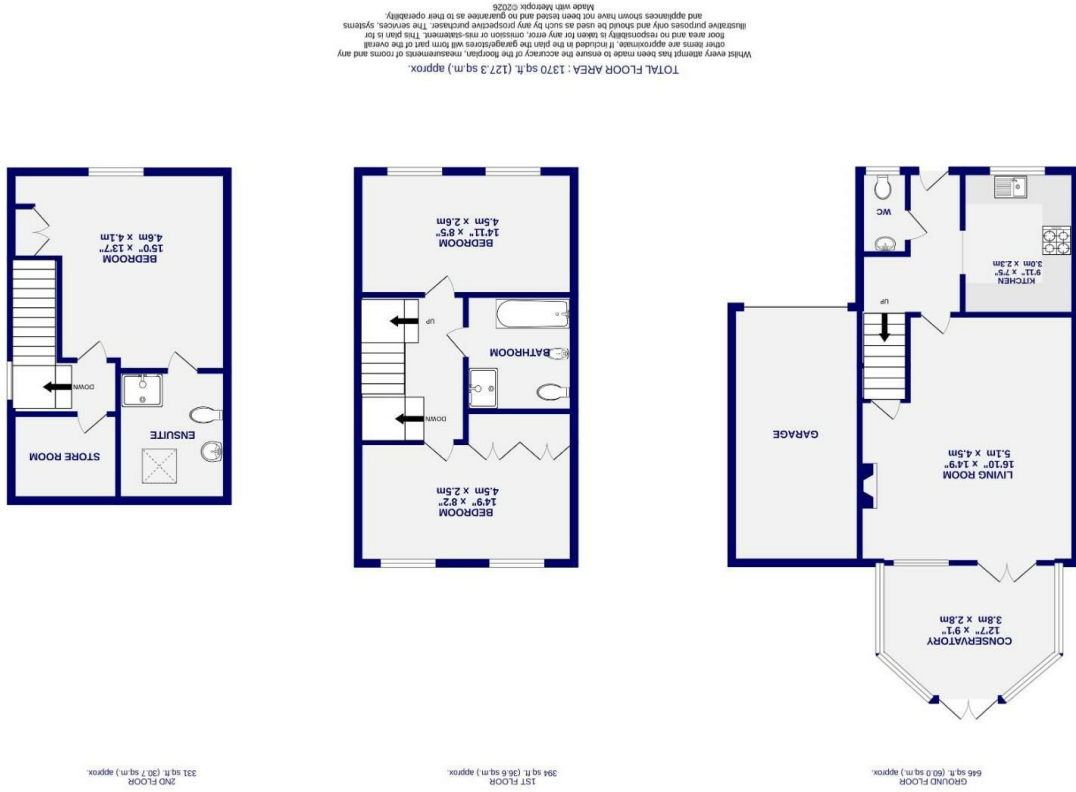


These particulars have been prepared as accurately and as reliably as possible, but should not be relied upon as 'statement of fact'. If there is any point which is of particular importance to you, please contact the office and we would be pleased to check the information. We have not tested any services, appliances, equipment or facilities and nothing in these particulars should be deemed to be a statement that they are in good working order, or that the property is in good structural condition or otherwise. Any areas, measurements, floor plans or distances referred to are given as a guide only and are not precise. Purchasers must satisfy themselves by inspection or by otherwise regarding the items mentioned above and as to the correctness of each of the statements contained in these particulars. No person in the employment of Ashtons has any authority to make or give any representation or warranty whatsoever in relation to this property or these particulars nor enter into any contract relating to the property on behalf of the vendor.

- EPC C
 - Modern Kitchen
 - Modern Rear Conservatory
 - Garage & Driveway
 - Two Bathrooms
 - Three Bedrooms
 - End Terrace House
- Freehold
Council Tax Band - D
YO31 9PA
Huntington, York
Birch Park



Birch Park
Huntington, York
YO31 9PA

£350,000

 3  2

A spacious and well presented three double bedroom, two bathroom end townhouse, set over three floors and located within the ever popular Huntington area, offering excellent access to local amenities, schooling and York city centre.

A generously proportioned home in a highly sought after residential location, ideal for families or those looking for flexible living space.

The property has been thoughtfully improved by the current owners, including a recently fitted kitchen and a new boiler, creating a home ready to move straight into.

Internally, the property is entered via a front entrance hallway with access to a convenient ground floor WC. To the rear is a generous lounge dining room, offering a versatile living space with access through to the conservatory, which overlooks and opens out onto the rear garden. The kitchen has been recently updated with modern fitted units and integrated appliances.

To the first floor are two well proportioned double bedrooms along with a family bathroom fitted with both bath and separate shower. The second floor is dedicated to an impressive primary suite, featuring a large double bedroom, ensuite shower room and a superb walk in wardrobe space. All three bedrooms benefit for fitted wardrobes.

Externally, the driveway provides ample off street parking, leading to an attached garage. To the rear is a good sized, enclosed garden which has been recently landscaped, offering a fantastic space for outdoor dining and entertaining.

