



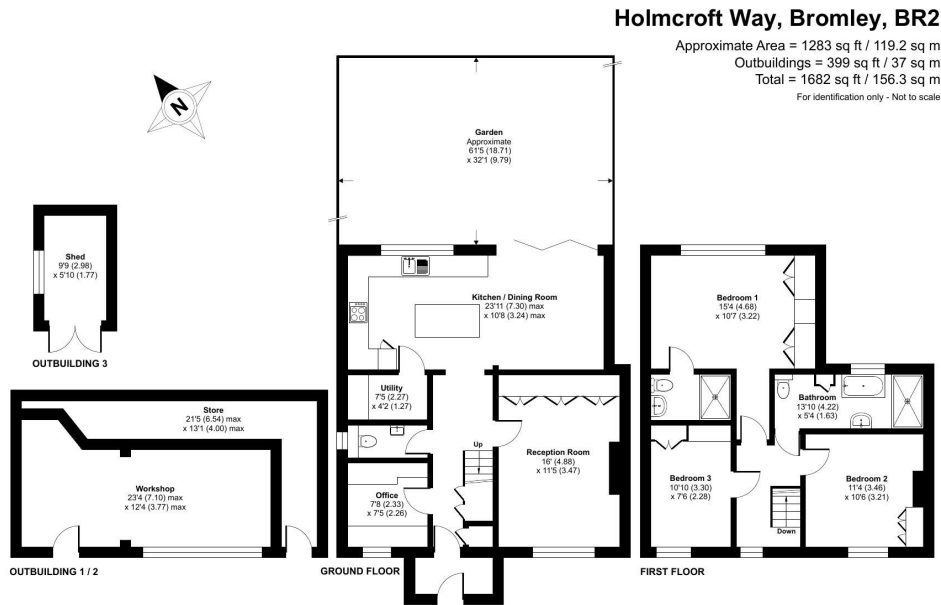
GUIDE PRICE

£675,000

Holmcroft Way

Bromley, BR2 8AD

EPC RATING: C COUNCIL TAX BAND: D



Floor plan produced in accordance with RICS Property Measurement 2nd Edition, Incorporating International Property Measurement Standards (IPMS2 Residential). Produced for Withers & Curling. REF: 1470642 © nichecom 2026.

Sinclair Hammelton



Energy Efficiency Rating		Current	Potential
Very energy efficient - lower running costs			
(92 plus) A			
(81-91) B			
(69-80) C		80	84
(55-68) D			
(39-54) E			
(21-38) F			
(1-20) G			
Not energy efficient - higher running costs			
England & Wales		EU Directive 2002/91/EC	

Agents Note: Whilst every care has been taken to prepare these particulars, they are for guidance purposes only. All measurements are approximate and are for general guidance purposes only and whilst every care has been taken to ensure their accuracy, they should not be relied upon and potential buyers/tenants are advised to recheck the measurements

Sinclair Hammelton

OFFICE ADDRESS
 1 Chatsworth Parade
 Kent
 BR5 1EF

OFFICE DETAILS
 01689 806 770
 infopw@sinclairhammelton.co.uk
<https://www.sinclairhammelton.co.uk>
 for-sale-in-petts-wood/