



Kings Road, SW3

£675,000

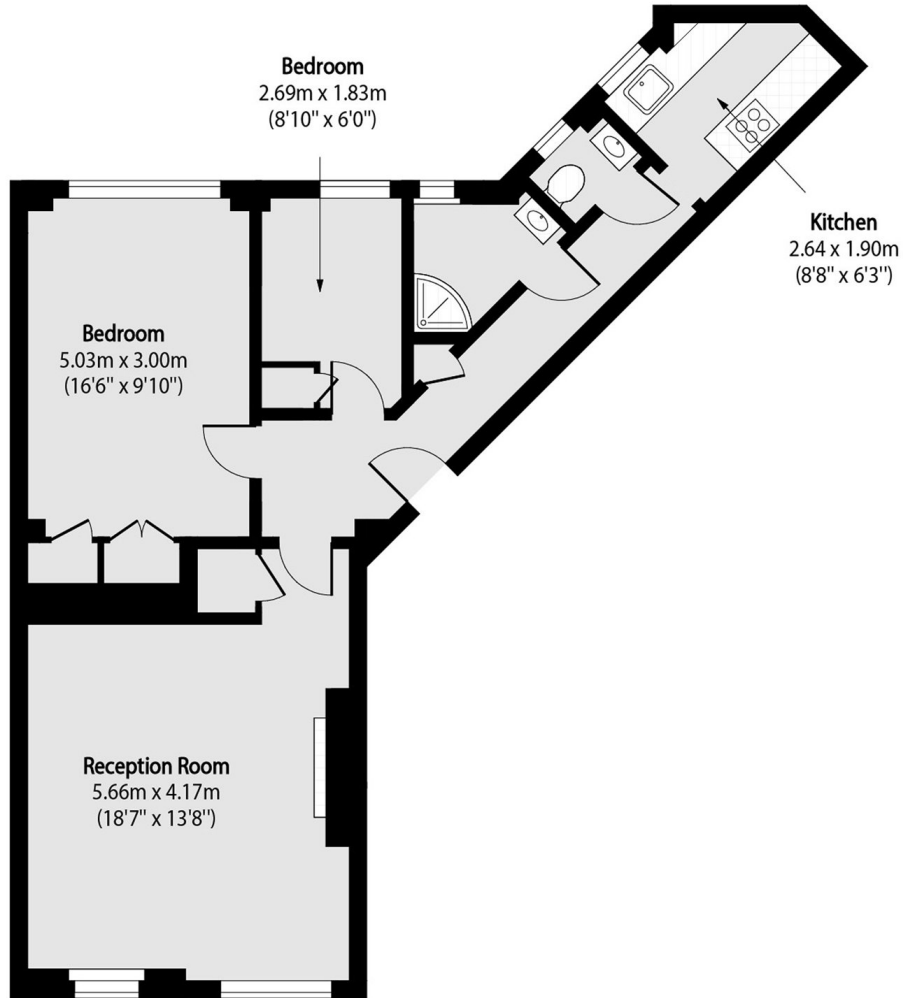
A delightful two bedroom property situated within a ported building. This apartment has lovely views of the building's private communal gardens and is positioned in the heart of Chelsea, making it a perfect London base

Kings Court North is ideally positioned on the King's Road. Restaurants, shops, Sloane Square underground station and Battersea park are all within walking distance.

Features

- Great Condition
- Long Leasehold
- Lift
- Porter
- Communal Gardens
- Fantastic Location

Kings Road,
London, SW3



Total area (approx): 59.73 sq m (643 sq. ft)