

Property ref: 73737

Garrard House, Reading, RG1 1NR

£1,150 PCM

HASLAM'S
Lettings



A modern, one bedroom third floor apartment in the heart of the town. Situated moments from Reading's main railway station. Reading Borough Council tax band C.

Water supply: Mains

Drainage info: Mains

Electricity supply: Mains

Broadband/Mobile Info: Connections available. For an indication of specific speeds and supply of Broadband and Mobile, we advise applicants go to the Ofcom website Broadband and Mobile Coverage Checker.

Available 08/06/2026

- Furnished to a high standard
- Contemporary fully fitted kitchen
- Ideal for commuters; Third floor position
- Large double bedroom; EPC rating C
- Sundry payment of £75pcm on top of the rent to cover hot water and heating via communal boiler
- No parking; Managed by HASLAM'S

*Fees For Assured Shorthold Tenancies: when you rent a property from us you will be required to pay a sum equivalent to one weeks' rent for a holding deposit. Upon successful application, this amount will be off set against your first months' rent. You will also be required to pay a security deposit equivalent to 5 weeks' rent which will be held and protected in line with Deposit legislation. For more information about our fees please visit: www.haslams.net
Fees for all other tenancies (Non Housing Act Tenancies / Company Lets): when you rent a property from us we will charge you a one-off fee per property. This charge is the equivalent of 15 days of the monthly rental charge (+VAT) with a minimum fee of £450 (inc.VAT) up to a maximum of £650 (inc.VAT). Other fees may apply depending on your circumstances.

0118 960 1055

lettings@haslams.net www.haslams.net

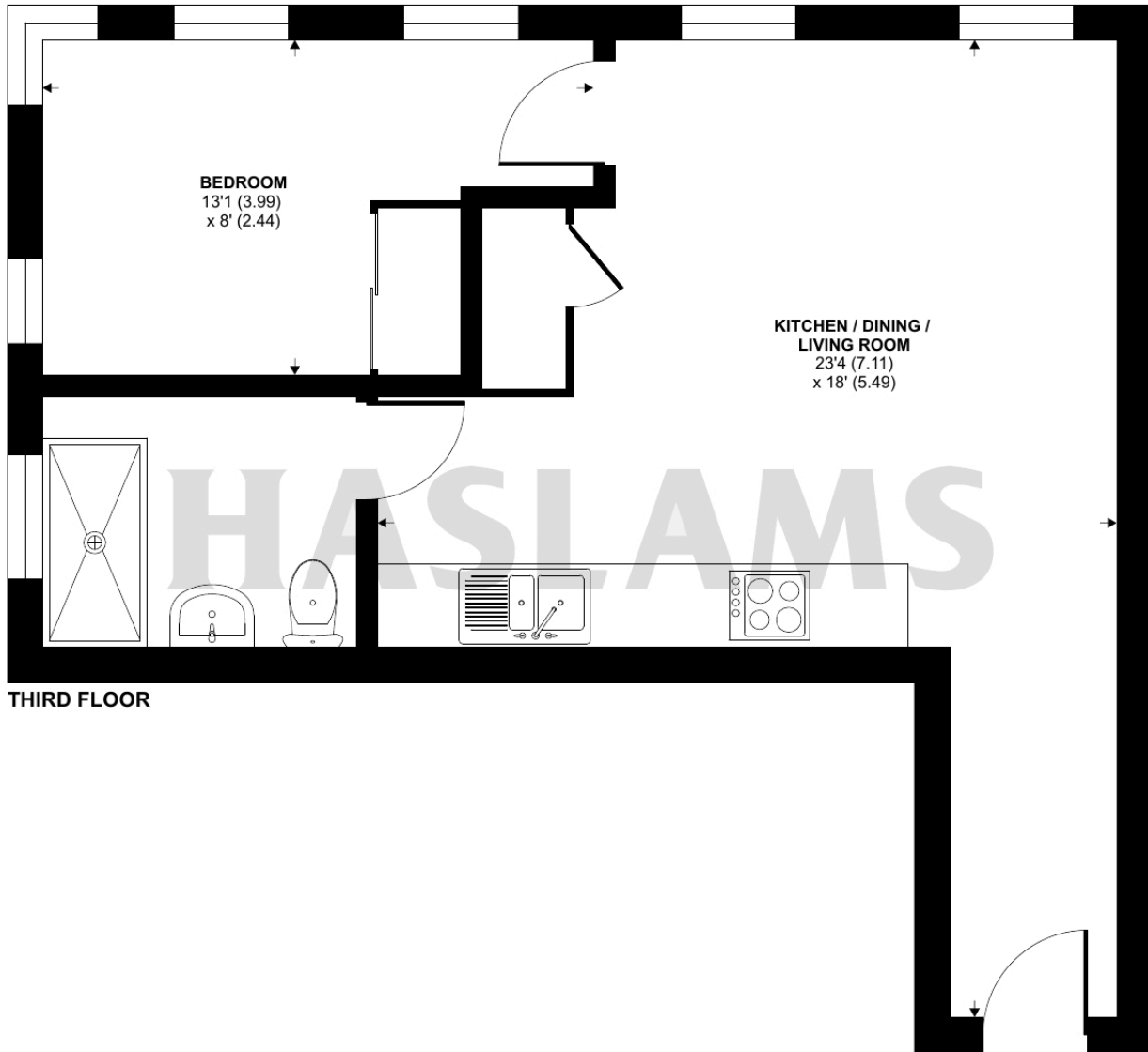
Haslams Estate Agents Ltd, 159 Friar Street, Reading, Berkshire, RG1 1HE



Garrard House, 30 Garrard Street, Reading, RG1

Approximate Area = 408 sq ft / 37.9 sq m

For identification only - Not to scale



THIRD FLOOR



Floor plan produced in accordance with RICS Property Measurement Standards incorporating International Property Measurement Standards (IPMS2 Residential). © n1che.com 2024. Produced for Haslams. REF: 1107084