



37 Wychwood Grove, Chandler's Ford, SO53 1FQ

£700,000

Located in the highly sought-after area of Hiltingbury, Chandler's Ford, this well presented, spacious home of over 2000 sq ft on Wychwood Grove offers an ideal blend of the perfect family home and convenience. With generous rooms throughout, the property provides ample space for family living and entertaining. The flexible layout is perfect for those who may wish to incorporate a home office, catering to the modern lifestyle with a generous sitting room, snug/study, kitchen/dining room, conservatory, utility room and modern cloakroom on the ground floor. On the first floor are four spacious bedrooms, shower room and bathroom. The double garage adds to the practicality of the home, providing secure parking and additional storage options. Families will appreciate the convenience of being within short walking distance to local schools, including the well-regarded Thornden School, as well as nearby shops and bus services to Winchester, Southampton and colleges. For those who commute, the M3 is just a short drive away, making this location particularly appealing for professionals. The property boasts an impressive rear garden, measuring approximately 61' x 59', offering a wonderful outdoor space for children to play, gardening enthusiasts to thrive, or entertaining with a covered dining area. This home is not just a place to live; it is a lifestyle choice in a community that values education, convenience, and family-friendly amenities. Do not miss the opportunity to make this delightful property your own.

ACCOMMODATION

Ground Floor

Open Porch:
Front door to

Reception Hall:
Wooden floor, stairs to the first floor.

Cloakroom:
Refitted suite comprising, wash basin with cupboard under, WC, under stairs storage cupboard.

Sitting room:
26'3" x 15'0" (8.00m x 4.56m) Feature log burner, triple aspect windows.

Conservatory:
11'6" x 7'7" (3.50m x 2.30m) Double doors to outside, electric heater.

Snug:
12'2" x 10'6" (3.72m x 3.20m) Dual aspect windows.

Kitchen/Dining room:
Kitchen: 13'6" x 10'6" (4.11m x 3.20m) Dining area: (13'4" x 8'8" (4.06m x 2.44m) The kitchen area is fitted in a range of modern cream gloss units with granite worktops, Range style oven and hob, space for American style fridge freezer, integrated dishwasher, island unit incorporating breakfast bar. The dining area affords space for table and chairs, with doors to front and rear.

Utility room:
Space and plumbing for washing machine, sink unit.

First Floor

Landing:
Hatch to loft space, cupboard housing the boiler.

Bedroom 1:
15'0" x 14'0" (4.57m x 4.27m) Fitted wardrobes.

Bedroom 2:
11'9" x 11'1" (3.58m x 3.38m) Built in wardrobe.

Bedroom 3:
12'2" x 10'6" (3.71m x 3.21m) Built in wardrobe.

Bedroom 4:
14'11" x 11'9" (4.54m x 3.57m)

En-suite shower room:
Comprising double width shower cubicle, wash hand basin with cupboard under, WC.

Bathroom:
Modern suite comprising bath with central mixer tap and shower attachment, separate corner shower cubicle, wash basin with cupboard under, WC.

OUTSIDE

Front:

To the front of the property is a good sized driveway and generous lawn area with side access to rear garden. From the kitchen/dining room door is an area to the front providing a sun deck for the evening sun.

Rear Garden:

The rear garden is a particularly attractive feature of the property measuring approximately 61" x 59" . Adjoining the house is a paved area with covered seating area leading onto a lawned area enclosed by flower and shrub borders and further patio, rear pedestrian gate. The gardens are enclosed by hedging and fencing.

Double garage:
17'6" x 16'3" (5.34m x 4.95m) Light and power, up and over door and door to the side.

OTHER INFORMATION

Tenure:
Freehold

Approximate Age:
1974

Approximate Area:
2235 sq ft / 207.5 sq m

Sellers Position:
Looking for a forward purchase

Heating:
Gas Central Heating

Windows:
UPVC Double glazing

Loft Space:
Partially boarded

Infant/Junior School:
Chandler's Ford Infant School / Merdon Junior School

Secondary School:
Thornden School

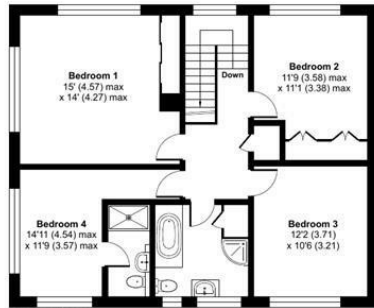
Local Council:
Eastleigh Borough Council - 02380 688000

Council Tax:
Band F

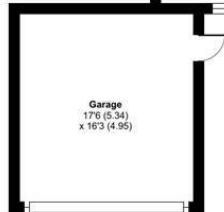
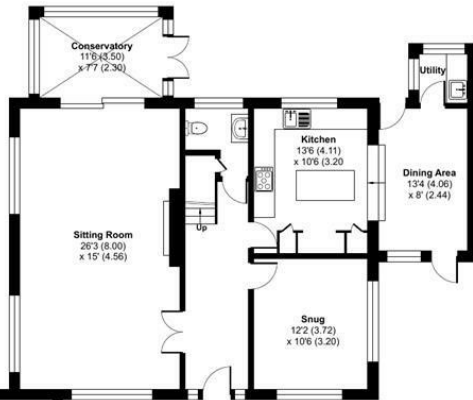
Agents Note:
If you have an offer accepted on a property we will need to, by law, conduct Anti Money Laundering Checks. There is a charge of £60 including vat for these checks regardless of the number of buyers involved.

Ground Floor = 1097 sq ft / 101.9 sq m
 First Floor = 853 sq ft / 79.2 sq m
 Garage = 285 sq ft / 26.4 sq m
 Total = 2235 sq ft / 207.5 sq m

For identification only - Not to scale



FIRST FLOOR



GROUND FLOOR



Energy Efficiency Rating		
	Current	Potential
Very energy efficient - lower running costs		
(92 plus) A		
(81-91) B		
(69-80) C	70	75
(55-68) D		
(39-54) E		
(21-38) F		
(1-20) G		
Not energy efficient - higher running costs		
England & Wales	EU Directive 2002/91/EC	

Floor plan produced in accordance with RICS Property Measurement 2nd Edition, Incorporating International Property Measurement Standards (IPMS2 Residential). © rnichecom 2026. Produced for Sparks Ellison. REF: 1416636

94 Winchester Road, Chandler's Ford, Hampshire, SO53 2GJ

Sales: t: 02380 255333 e: property@sparksellison.co.uk

Lettings: t: 02380 018518 e: lettings@sparksellison.co.uk

While we endeavour to make our sales particulars fair, accurate and reliable, they are only a general guide to the property and, accordingly, if there is any point which is of particular importance to you please contact the office and we will be pleased to check it for you, especially if you are contemplating travelling some distance to view the property. These approximate room sizes are only intended as general guidance. You must verify the dimensions carefully before ordering carpets or any built in furniture. Please note we have not tested the services or any of the equipment or appliances in this property, accordingly we strongly advise prospective buyers to commission their own survey or service report before finalising their offer to purchase. These particulars are issued in good faith but do not constitute representations of fact or form part of any offer or contract. The matters referred to in these particulars should be independently verified by prospective buyers or tenants. Neither Sparks Ellison nor any of its employees or agents has any authority to make or give any representation or warranty whatever in relation to this property. Your home is at risk if you do not keep up repayments on a mortgage or other loan secured on it. Written quotations available on request. All loans secured on property. Life assurance usually required.



