



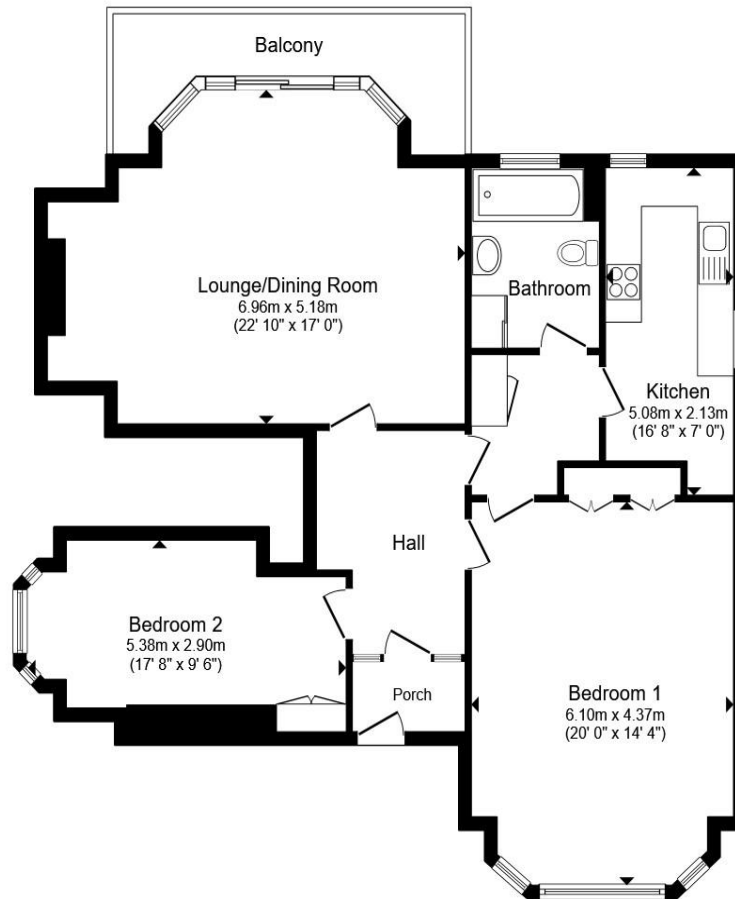
Arden Mead Staveley Road, Eastbourne BN20 7LH

welcome to

Arden Mead Staveley Road, Eastbourne

A charming two-bedroom ground floor flat featuring a private entrance, private balcony, allocated parking, and beautiful communal gardens. Filled with original character features throughout, this home offers a unique blend of charm and convenience in a peaceful setting.





Ground Floor

Total floor area 103.2 m² (1,111 sq.ft.) approx

This floor plan is for illustrative purposes only. It is not drawn to scale. Any measurements, floor areas (including any total floor area), openings and orientation are approximate. No details are guaranteed, they cannot be relied upon for any purpose and they do not form part of any agreement. No liability is taken for any error, omission or misstatement. A party must rely upon its own inspection(s). Powered by www.propertybox.io



Private Entrance Porch

Entrance Hall

Lounge

23' 3" max x 12' 4" plus bay (7.09m max x 3.76m plus bay)

Kitchen

16' 11" into recess x 7' 5" (5.16m into recess x 2.26m)

Bedroom 1

14' 8" x 16' 3" plus bay (4.47m x 4.95m plus bay)

Bedroom 2

13' 8" into bay x 11' 4" into recess (4.17m into bay x 3.45m into recess)

Bathroom

Private Balcony

Communal Gardens

welcome to

Arden Mead Staveley Road, Eastbourne

- TWO BEDROOM GROUND FLOOR FLAT
- PRIVATE ENTRANCE
- PRIVATE BALCONY
- ALLOCATED PARKING
- BEAUTIFULLY MAINTAINED COMMUNAL GARDENS

Tenure: Leasehold EPC Rating: Awaiting

Council Tax Band: C Service Charge: 3410.00

Ground Rent: Ask Agent

This is a Leasehold property with details as follows; Term of Lease 999 years from 25 Mar 1985. Should you require further information please contact the branch. Please Note additional fees could be incurred for items such as Leasehold packs.

£375,000



Please note the marker reflects the postcode not the actual property

view this property online fox-and-sons.co.uk/Property/EBN116621



Property Ref:
EBN116621 - 0003

1. MONEY LAUNDERING REGULATIONS Intending purchasers will be asked to produce identification documentation at a later stage and we would ask for your co-operation in order that there is no delay in agreeing the sale. 2. These particulars do not constitute part or all of an offer or contract. 3. The measurements indicated are supplied for guidance only and as such must be considered incorrect. Potential buyers are advised to recheck measurements before committing to any expense. 4. We have not tested any apparatus, equipment, fixtures or services and it is in the buyers interest to check the working condition of any appliances. 5. Where an EPC, or a Home Report (Scotland only) is held for this property, it is available for inspection at the branch by appointment. If you require a printed version of a Home Report, you will need to pay a reasonable production charge reflecting printing and other costs. 6. We are not able to offer an opinion either written or verbal on the content of these reports and this must be obtained from your legal representative. 7. Whilst we take care in preparing these reports, a buyer should ensure that his/her legal representative confirms as soon as possible all matters relating to title including the extent and boundaries of the property and other important matters before exchange of contracts.

Fox & Sons is a trading name of Sequence (UK) Limited which is registered in England and Wales under company number 4268443, Registered Office is Cumbria House, 16-20 Hockliffe Street, Leighton Buzzard, Bedfordshire, LU7 1GN. VAT Registration Number is 500 2481 05.

fox & sons



01323 410911



Eastbourne@fox-and-sons.co.uk



19 Cornfield Road, EASTBOURNE, East Sussex,
BN21 4QD



fox-and-sons.co.uk