



Wrotham Road, NW1

£1,400,000

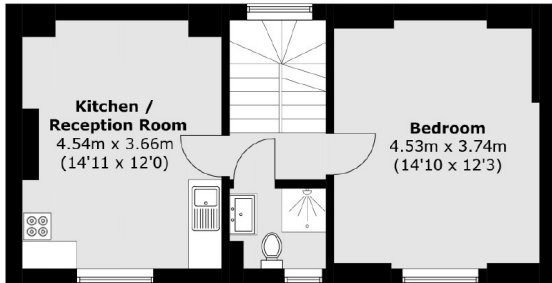
This semi-detached double fronted freehold house is approximately 2,025 sq.ft and is in need of refurbishment. The property offers four bedrooms, four bathrooms and is offered chain free.

Wrotham Road is a tree-lined residential road within a mile of Caledonian Road station (Piccadilly line), Camden Road Overground, Camden Town station (Northern line), and St Pancras International (Eurostar).

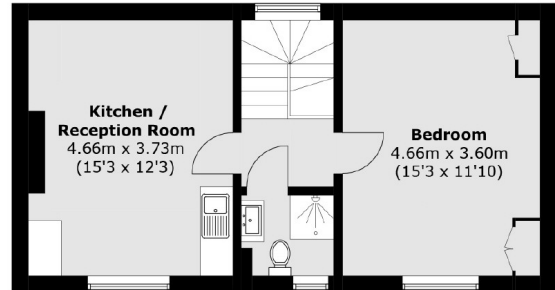
Features

- Double Fronted
- Chain Free
- Garden
- Great Location
- Freehold
- In Need Of Refurbishment

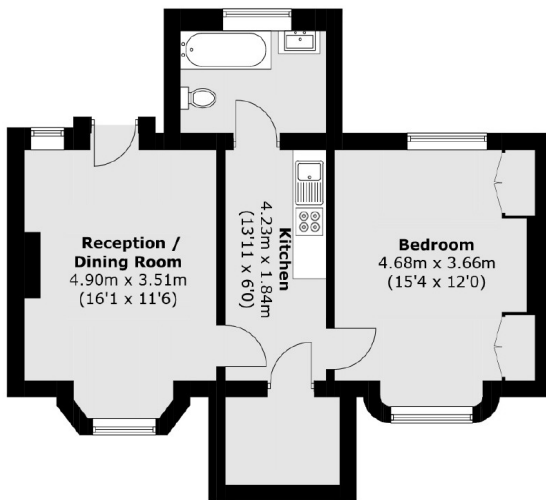
Wrotham Road, London, NW1



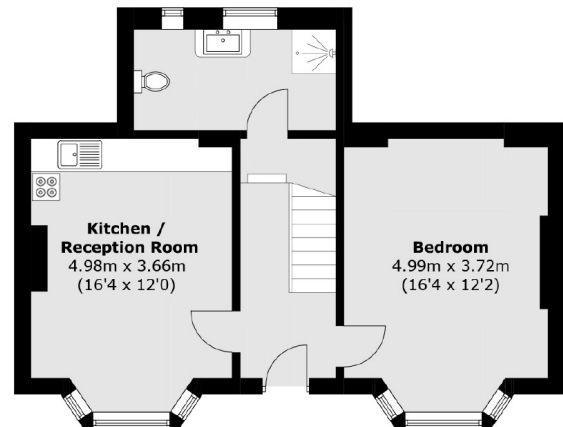
First Floor



Second Floor



Lower Ground Floor



Raised Ground Floor

Total area (approx.): 188.2 sq. m (2,025.7 sq. ft)