



**JOWEBSTER**

*Apartment C82*  
Albion Riverside, SW11



### Property Attributes

- Reception Room
- Kitchen
- Master Bedroom with Ensuite
- Second Bedroom
- Family Bathroom
- 24 Hour Security
- Gym
- Indoor Swimming Pool
- Car Parking Space



### Terms

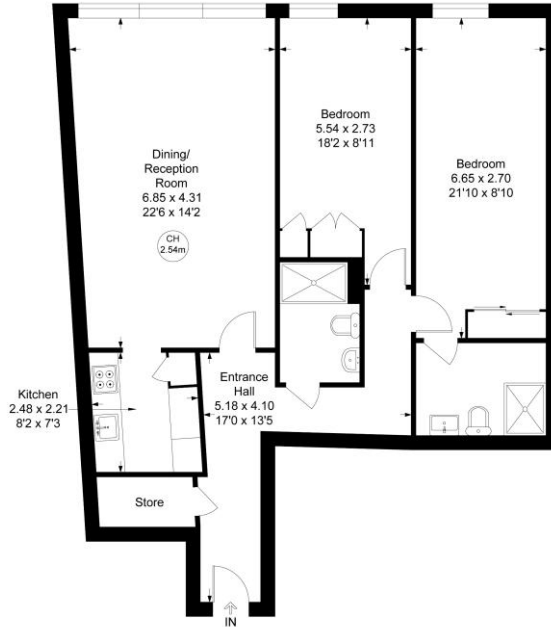
- Price: £975,000
- Borough: London Borough of Wandsworth
- Tenure: Leasehold 967 approx. years remaining
- Service Charge: £10,400 per annum
- Ground Rent: £275 per annum
- Council Tax Band: Band G



## ALBION RIVERSIDE, SW11

Approximate gross internal area = 991 sq ft / 92.10 sq m

Key:  
CH - Ceiling Height



### Eighth Floor

Not to scale, for guidance only and must not be relied upon as a statement of fact.  
All measurements and areas are approximate only

+44 (0) 20 7349 7055  
[sales@jowebster.com](mailto:sales@jowebster.com)

#### Misdescription Act

We wish to advise prospective purchasers that these sales particulars are believed to be correct, but their accuracy is in no way guaranteed, nor do they form any part of contract. We have not carried out a detailed survey nor tested the services, appliances or specific fittings. Measurements are approximate.