



Connells

Lime Tree Drive
Houghton Regis Dunstable

Lime Tree Drive Houghton Regis Dunstable LU5 7AE

for sale offers in excess of
£425,000



Property Description

Located within a modern development on the outskirts of Houghton Regis, this well-presented Four -bedroom semi-detached townhouse offers contemporary accommodation with excellent transport links.

The ground floor comprises a fully integrated kitchen, downstairs cloakroom, and a bright lounge with french doors opening onto the rear garden. Upstairs, the master bedroom benefits an en suite, three further bedrooms and family bathroom.

Externally the property benefits off road parking for Two cars, garage and rear garden. The property is ideally positioned for commuters with easy access to M1 Junction 11a and nearby amenities. Do not miss out on this fantastic home call Connells today to arrange a viewing 01582 661265.

Ground Floor

Entrance Hall

Double glazed door to front aspect, radiator.

Cloakroom

WC, wash hand basin, radiator

Lounge

Double glazed french doors and windows to

rear aspect, radiator, under stairs storage.

Kitchen

Double glazed window to front aspect, wall and base units, one and a half bowl sink and drainer, integrated electric oven, integrated gas hob with cooker-hood, integrated fridge freezer, integrated appliances, radiator.

Landing

Stairs from hall, storage cupboard, top floor storage cupboard.

First Floor

Bedroom Two

Double glazed window to rear aspect, radiator.

Bedroom Three

Double glazed window to front aspect, radiator.

Bedroom Four

Double glazed window to rear aspect, radiator.

Bathroom

Double glazed window to front aspect, bath with mixer taps, WC, wash hand basin, part tiled.

Second Floor

Bedroom One

Double glazed window to rear aspect, radiator.

En Suite

Double glazed window to front aspect, shower cubicle, wash hand basin, WC, radiator.

Outside

Front Garden

Parking for two cars.

Rear Garden

Laid to lawn, patio.

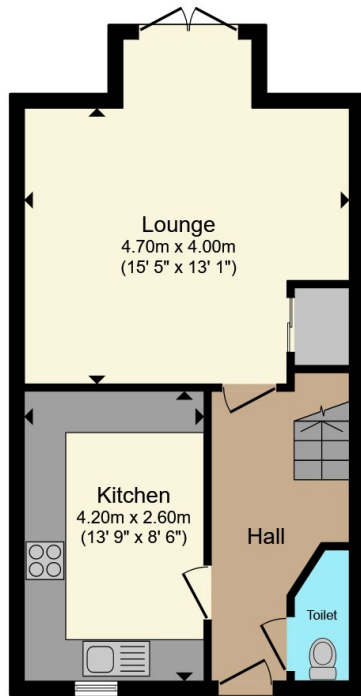
Outbuilding

Detached garage

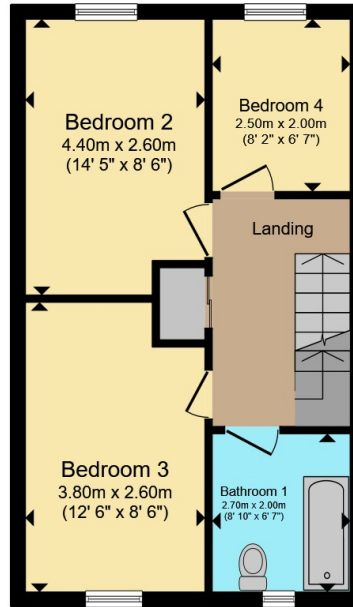




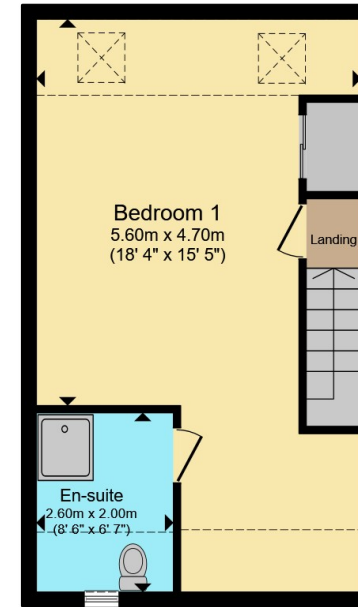




Ground Floor



First Floor



Second Floor

Total floor area 118.9 m² (1,280 sq.ft.) approx

This floor plan is for illustrative purposes only. It is not drawn to scale. Any measurements, floor areas (including any total floor area), openings and orientation are approximate. No details are guaranteed, they cannot be relied upon for any purpose and they do not form part of any agreement. No liability is taken for any error, omission or misstatement. A party must rely upon its own inspection(s). Powered by www.propertybox.io



To view this property please contact Connells on

T 01582 661 265

E dunstable@connells.co.uk

19 High Street North
DUNSTABLE LU6 1HX

EPC Rating: B Council Tax
Band: D

Tenure: Freehold

view this property online connells.co.uk/Property/DUN312180



1. MONEY LAUNDERING REGULATIONS Intending purchasers will be asked to produce identification documentation at a later stage and we would ask for your co-operation in order that there will be no delay in agreeing the sale. 2. These particulars do not constitute part or all of an offer or contract. 3. The measurements indicated are supplied for guidance only and as such must be considered incorrect. Potential buyers are advised to recheck measurements before committing to any expense. 4. We have not tested any apparatus, equipment, fixtures, fittings or services and it is in the buyers interest to check the working condition of any appliances.

Connells Residential is registered in England and Wales under company number 1489613, Registered Office is Cumbria House, 16-20 Hockliffe Street, Leighton Buzzard, Bedfordshire, LU7 1GN. VAT Registration Number is 500 2481 05.

See all our properties at www.connells.co.uk | www.rightmove.co.uk | www.zoopla.co.uk

Property Ref: DUN312180 - 0005