

## Fulford Hall Road, Solihull, B90 1QY

Offers In Region Of £390,000

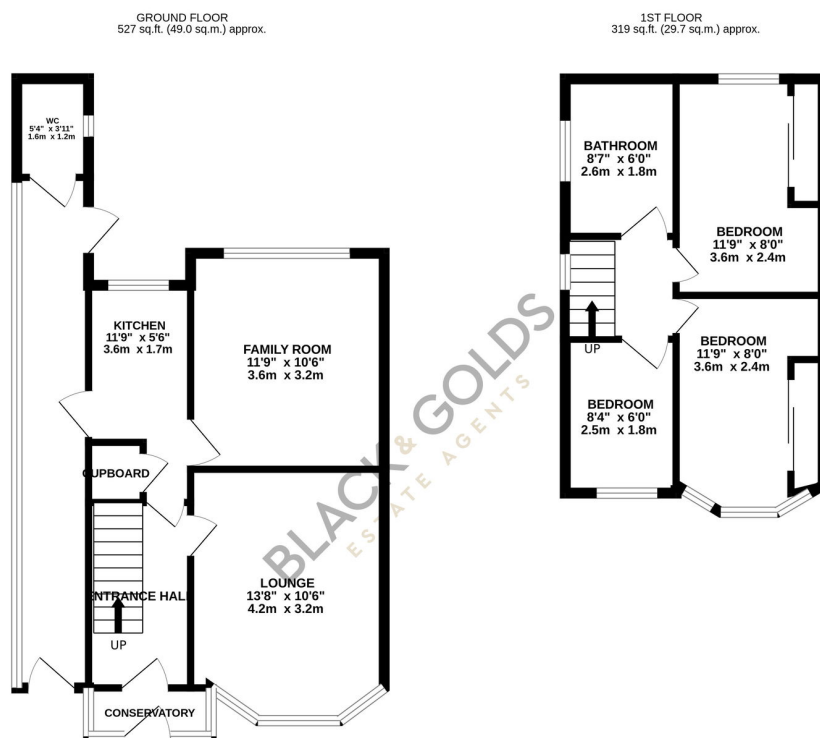
3 1 2



Charming 3-Bed Home in Tidbury Green with Bay-Fronted Lounge, Conservatory & Private Garden - Chain Free

## Key Features

- Three bedrooms
- Family room opening to garden
- Conservatory for extra living space
- Private rear garden
- Excellent local schools nearby
- Spacious lounge with bay window
- Modern fitted kitchen
- Contemporary family bathroom
- Ground floor WC
- Sought-after Tidbury Green location with great transport links



TOTAL FLOOR AREA: 846 sq.ft. (78.6 sq.m.) approx.

Whilst every attempt has been made to ensure the accuracy of the floorplan contained here, measurements of doors, windows, rooms and any other items are approximate and no responsibility is taken for any error, omission or mis-statement. This plan is for illustrative purposes only and should be used as such by any prospective purchaser. The services, systems and appliances shown have not been tested and no guarantee as to their operability or efficiency can be given.

Made with Metropix 6/2025