





The Quillet Longpark Hill

Maidencombe, Torquay

The Quillet, Longpark Hill, Maidencombe, Torquay

Set in an elevated, semi-rural position on the outskirts of Torquay, **The Quillet** is a striking, recently constructed architect-designed home that combines clean modern lines with a warm, family-friendly layout and genuinely standout views. Built to make the most of its setting, the house is all about light, scale and effortless flow to the outside – with wide glazing, multiple door openings and wraparound balcony terraces creating that immediate “this is different” feeling the moment you arrive.

Behind its crisp contemporary façade, the accommodation is substantial and well-balanced, offering **around 284m² / 3,057 sq ft** of internal space arranged over two floors, plus a double garage.

The design works brilliantly for modern family life: generous reception areas for entertaining, generous bedroom proportions, and the flexibility for multi-generational living or working from home without anyone feeling on top of each other.



GARDEN

The outside space at The Quillet has been designed to make the most of its elevated setting, with a large, level lawn providing an excellent family space and a lovely sense of openness, framed by established boundaries and mature trees. A series of raised terraces and wide steps lead out from the house to create seamless indoor-outdoor living, while the wraparound balcony/terrace offers multiple seating areas to follow the sun and soak up the outlook. The setting is a real highlight – enjoying a peaceful rural backdrop with far-reaching views across rolling countryside, and sea views in the distance, giving you that rare blend of coast-and-country lifestyle. There are also smart, practical touches including a decked seating area (ideal for evening drinks around a firepit), planted borders for year-round interest, and useful outbuildings/sheds for storage and garden kit (including a dedicated mower shed). Overall it's a brilliant, low-fuss outdoor setup: plenty of space to relax and entertain, with views that do the heavy lifting.

DOUBLE GARAGE

2 Parking Spaces

DRIVEWAY

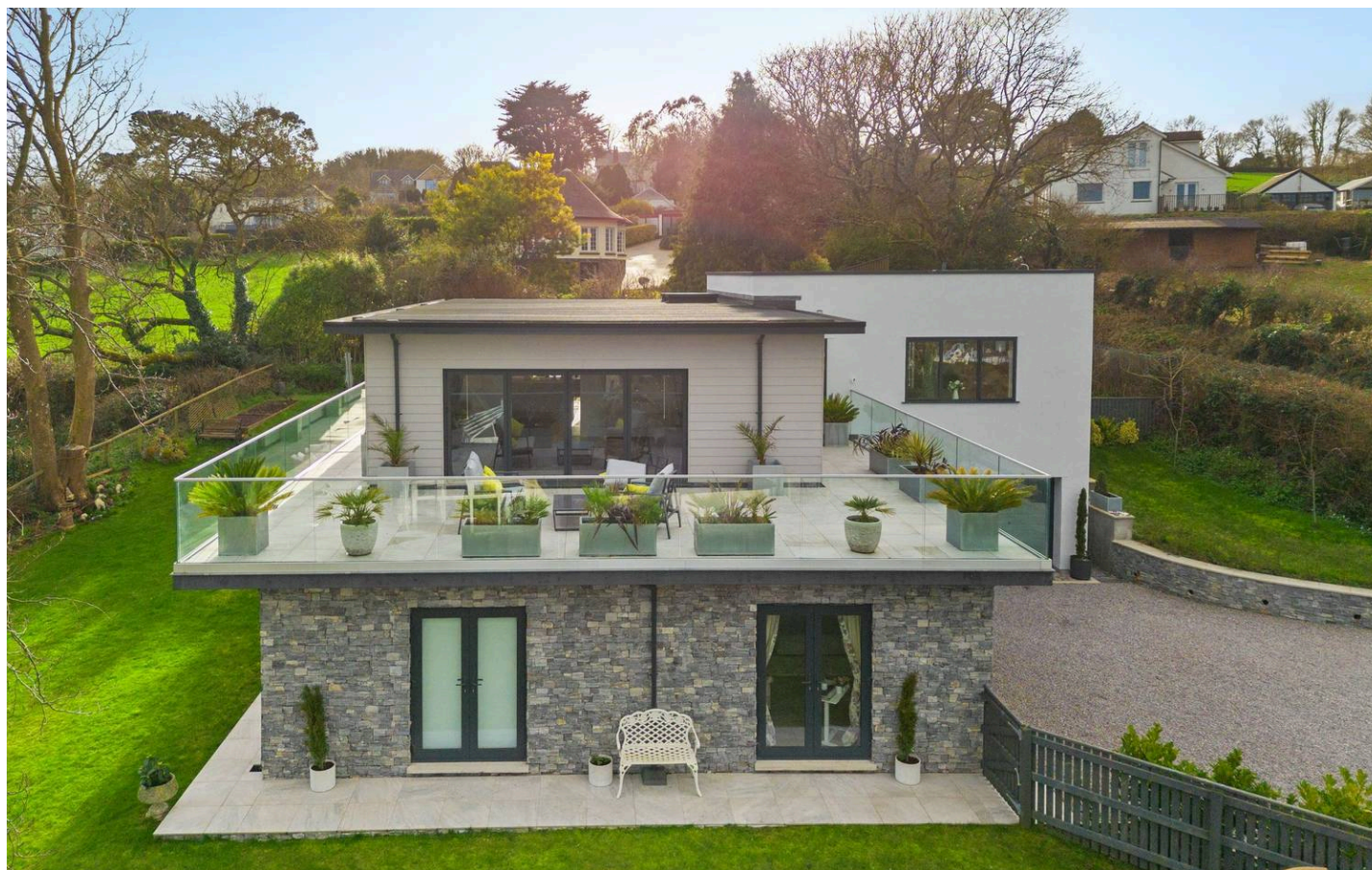
10 Parking Spaces

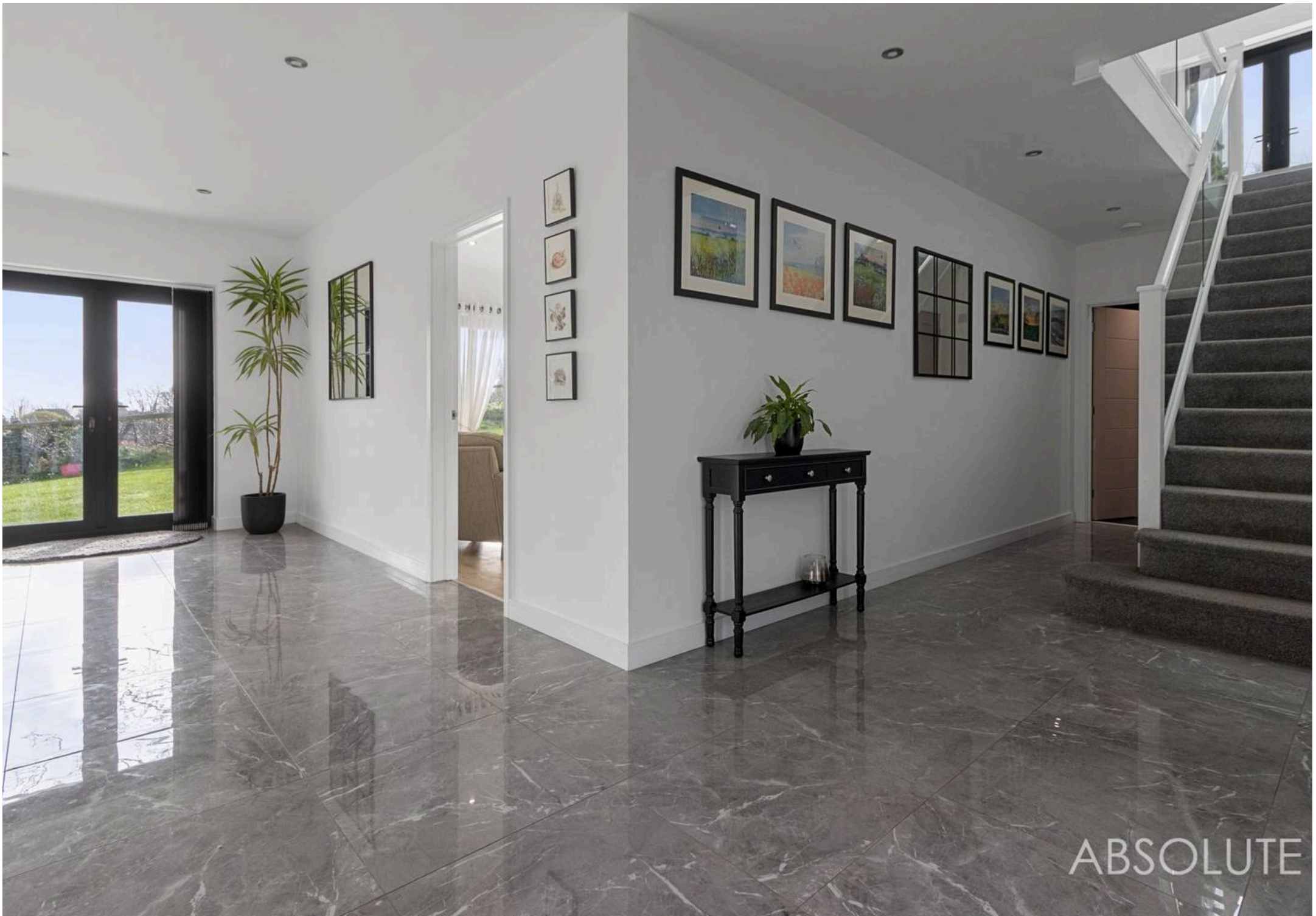


The Quillet Longpark Hill

Maidencombe, Torquay

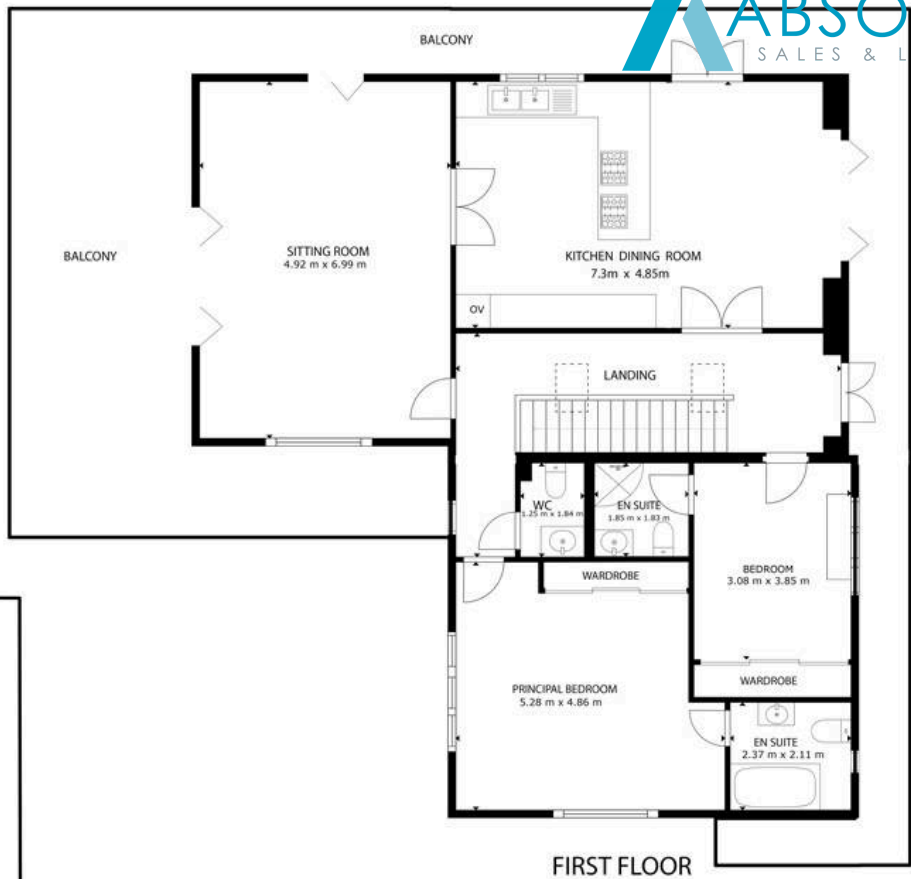
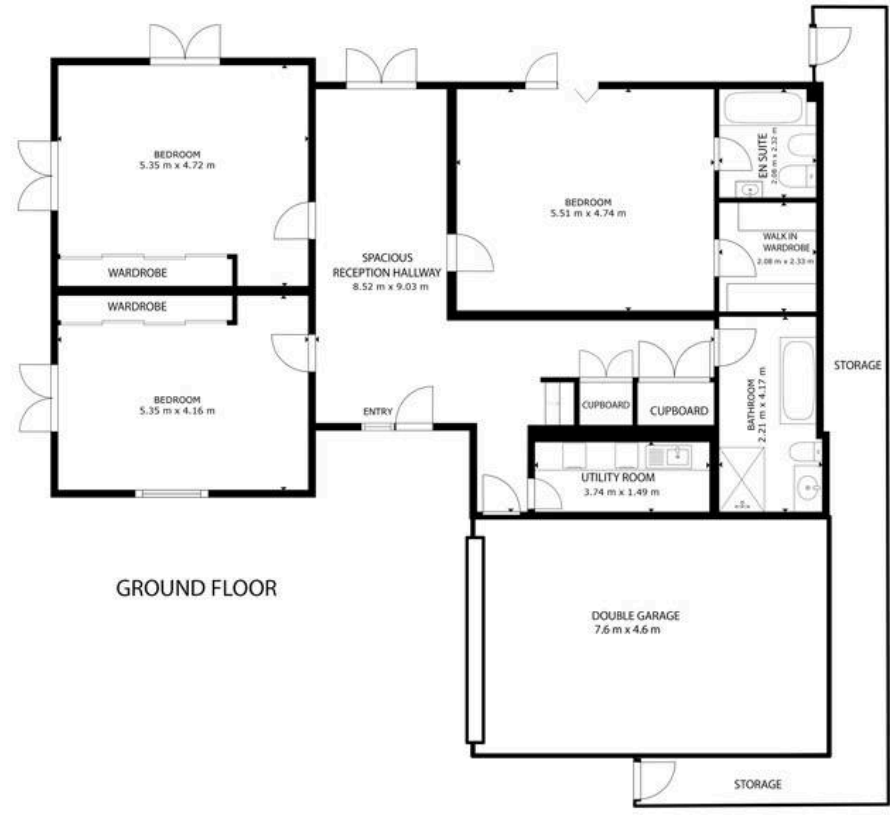
Longpark Hill sits in a wonderfully semi-rural pocket of Maidencombe, where leafy lanes, open countryside and the coast all meet. It's the sort of location that feels properly "away from it", yet you're still within easy reach of Torquay for day-to-day amenities, schools, shopping and the harbour. Local beauty spots & coastline Maidencombe Beach is close by and is a real hidden gem – a quiet, unspoilt cove that's ideal for a swim, paddle or relaxed beach walk. The area is perfectly placed for the South West Coast Path, with excellent routes linking Maidencombe with nearby coves and headlands. Easy access to the wider coast around Babbacombe Bay for sea views, cliff-top scenery and coastal days out. Walks right on your doorstep The Maidencombe Circular is a popular local route taking in woodland, village lanes and coastline, with plenty of "stop and admire" viewpoints along the way. You can also pick up longer coastal stretches, including the scenic Babbacombe to Maidencombe section for proper sea-air walking. Pubs & places to eat The standout local is The Thatched Tavern in Maidencombe – a characterful, well-regarded country pub/restaurant in a classic thatched building. For a special lunch/dinner by the water, Cary Arms & Spa sits on Babbacombe Bay with a strong reputation and a brilliant coastal setting.





ABSOLUTE







Absolute Sales & Lettings

Absolute Sales & Lettings Ltd, 13 Ilsham Road - TQ1 2JG

01803 214214

torquay@movewithabsolute.co.uk

movewithabsolute.co.uk/

