



Tankerville Road, SW16

£600,000

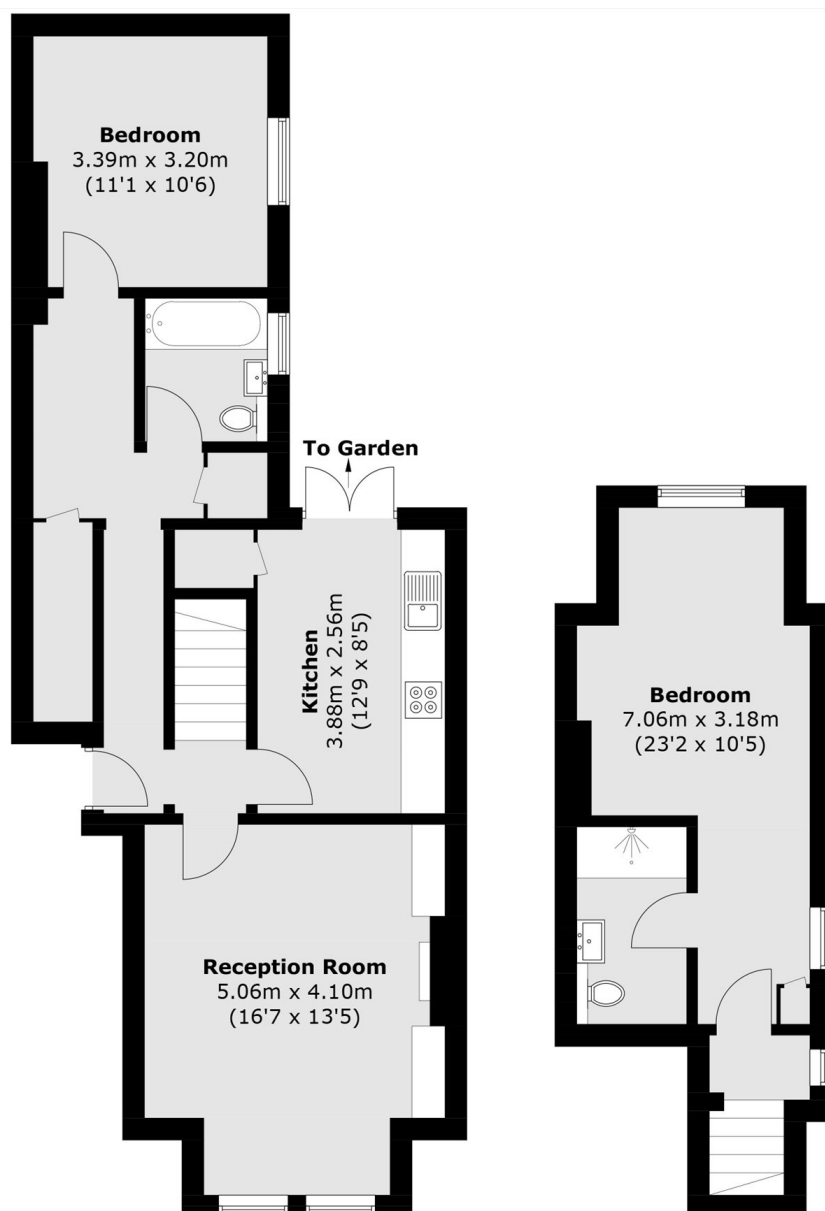
OFFERS OVER At just under 930 sq ft, this impressive ground-floor, split-level garden flat offers two generous double bedrooms and is presented in excellent condition throughout. The property boasts high ceilings, attractive period features, and well-proportioned rooms. Further benefits include two bathrooms, a private garden, and the convenience of no onward chain.

Tankerville Road is a peaceful residential street that offers the perfect balance of tranquillity and convenience. Everything you need is right on your doorstep, including the open green spaces of Streatham Common, the vibrant shops, cafés and restaurants of Streatham High Road, and superb transport links into the City via Streatham Common and Streatham Mainline stations. At the end of the road, you'll also find a Sainsbury's Local, a cosy coffee shop, a welcoming pub, and a popular local deli.

Features

- Two Double Bedrooms
- Split Level
- No Onward Chain
- Separate Kitchen
- Two Bathrooms
- Private Garden

Tankerville Road, London, SW16



Ground Floor

First Floor

Total area (approx.): 85.9 sq. m (924.6 sq. ft)