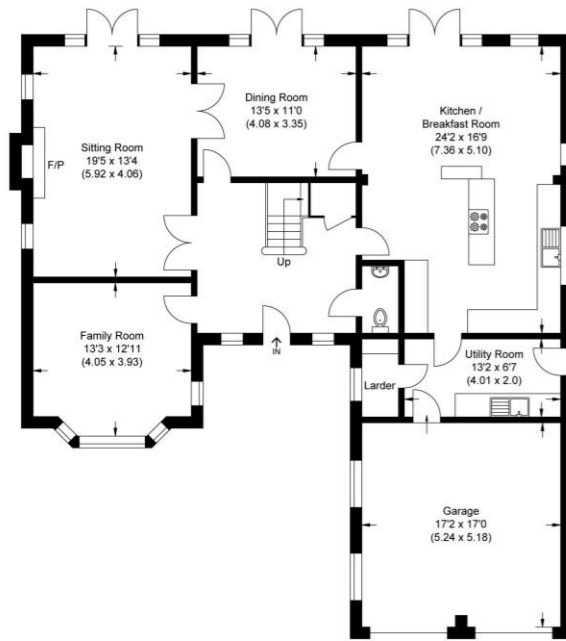




Approximate Gross Internal Area
 253.0 sq m / 2723.26 sq ft (Excludes Garage)
 Garage Area : 27.0 sq m / 290.63 sq ft
 Total Area : 280.0 sq m / 3013.89 sq ft



Ground Floor



First Floor

Illustration for identification purposes only, measurements are approximate, not to scale.



Disclaimer: We wish to inform prospective purchasers that we have prepared these sales particulars as a general guide. We have not carried out a detailed survey, nor tested the services, appliances and specific fittings. Room sizes are approximate and rounded: they are taken between internal wall surfaces and therefore include cupboards / shelves, etc. Accordingly, they should not be relied upon for carpeting, curtains / blinds and kitchen equipment, whether fitted or not, are deemed removable by the vendor unless specifically itemised within these particulars.

Postcode for sat nav: SL5 0NF



High Street, Sunningdale

£1,575,000



The Old Dairy, 7 Updown Hill, Windlesham, Surrey GU20 6AF
 enquiries@newtonrowe.co.uk | 01276 986900

www.newtonrowe.co.uk



High Street, Sunningdale, Berkshire

Located in the old village of Sunningdale, close to Sunningdale Church this impressive, individual five bedroom detached house presented in superb order offers over 3000 sq. ft of accommodation including the double garage.

FEATURES

- Located in Old Sunningdale
- Charters school catchment area
- 3013 sq.ft including garage
- Walking distance of local schools, shops and Sunningdale mainline train station
- Impressive master suite
- Stylish, modern kitchen and bathrooms
- Lovely country walks in Sunningdale Park, Coworth Park and Windsor Great Park within a short stroll
- Underfloor heating to the ground floor
- Cosy, high quality wood burner

ACCOMMODATION

- Entrance hall with galleried landing
- Open plan kitchen/dining room
- Larder/boot room
- Downstairs cloakroom
- Utility room
- Three reception rooms
- Five bedrooms
- Three modern bathrooms

OUTSIDE

- Double garage
- Driveway parking
- South westerly facing landscaped garden

LOCAL AUTHORITY/COUNCIL TAX

Windsor and Maidenhead – Band H

EPC RATING

C







A tall, dark wood cabinet unit on the left side of the kitchen. It features two built-in ovens stacked vertically. On top of the cabinet, there is a red ceramic bowl and a decorative sign that reads "CAKES & BREAD FLAPJACKS".

The main kitchen counter area with white cabinetry. It includes a built-in microwave, a red stand mixer, a toaster, and a kettle. A stainless steel range hood is mounted above the counter.

A kitchen island with a dark wood base and a glass-topped bar. Two wooden bar stools with metal legs are tucked under the bar. A clear glass vase filled with orange flowers sits on the bar.

HOME
SWEET
HOME