

# Doncaster, South Yorkshire, DN8



Price as listed



This brand new Omar Newmarket (40'x20') park home is perfect for those looking for a detached, easy to maintain, bungalow-style property. The home has a modern kitchen and dining room, living room, two double bedrooms, an en suite to the master and a family bathroom.

A beautiful, well planned urban park for the over 55s, yet in a lovely tranquil environment surrounded by open recreational land. Good local bus services provide excellent access to the bustling market town centre of Thorne near Doncaster with its good local shops, pubs, etc. Sainsburys supermarket is just 10/15 minutes walk away or a few minutes by car. Two railway stations serve Thorne offering good access to the surrounding areas. The historic market town of Doncaster situated on the River Don is just 13 miles away, with several excellent shopping centres and other amenities it's great for a day out.

Age restriction: Over 55s

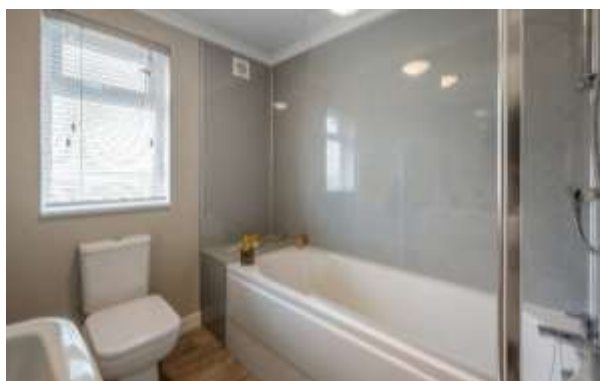
Pet friendly: Yes

Site fees: £217 per month

Residential license

### Key Features

- Community Living
- Established Park
- Garden Shed
- Luxury 2 Bed Park Bungalow
- Modern home
- Over 55's
- Part Exchange Available
- Pre-owned park home
- Residential Development



### House to sell?

Hassle-free Property Part-Exchange is available from Quickmove Properties, with no estate agent fees, no solicitor's fees and no market uncertainty.

### CONTACT US

01793 840917

advice@quickmoveproperties.co.uk

