



Earl's Court Square, SW5

£900,000

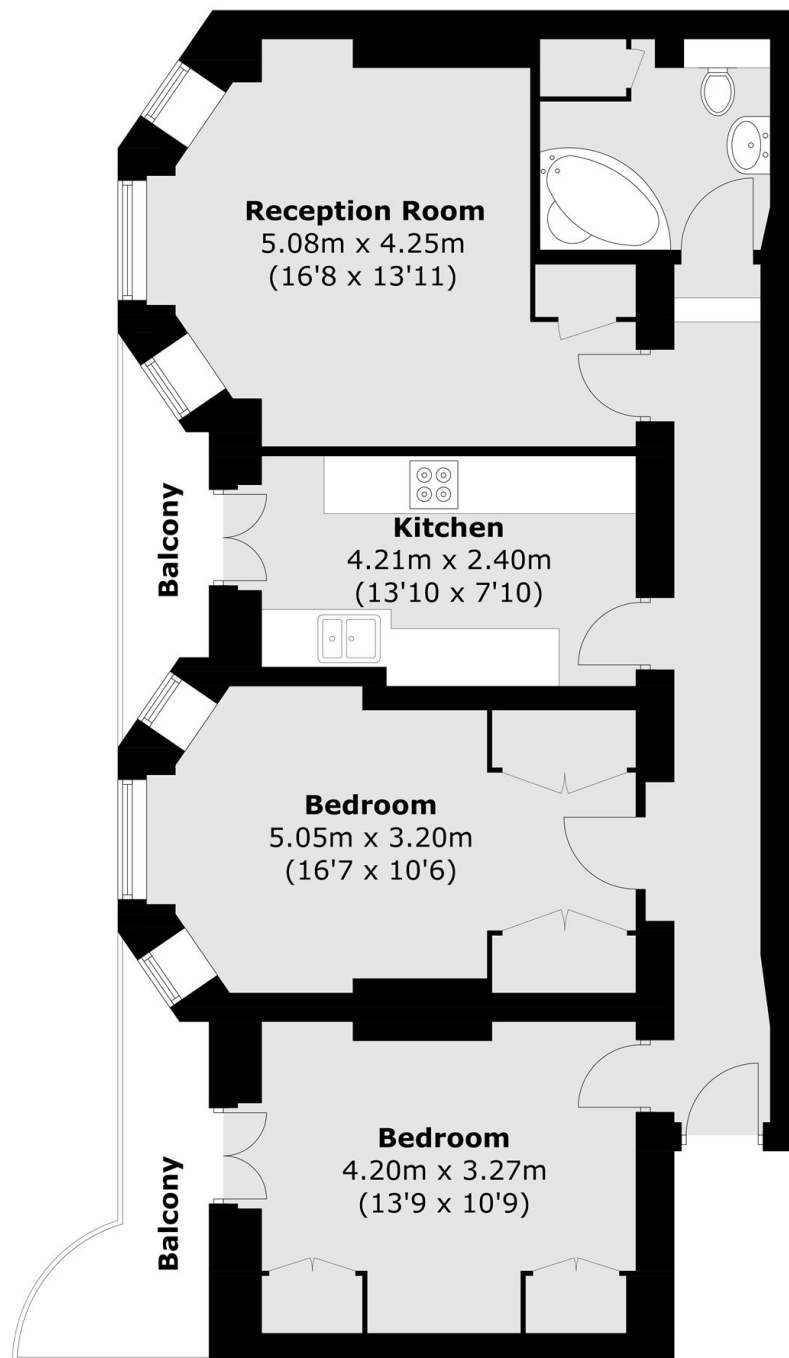
Set within an elegant period building in the heart of Earl's Court, this beautifully presented apartment offers a 970 year lease and an exceptional opportunity to acquire a home in one of South West London's most sought-after locations. The property combines classic character with modern comfort, featuring well-proportioned interiors, excellent natural light, and access to the stunning communal gardens of Earl's Court Square.

The flat has a wide range of shops, cafés and restaurants on Earl's Court road. The nearest underground station is Earl's Court which has the best lines to take you into the City.

Features

- Highly Sought After Location
- No Ongoing Chain
- Access To Communal Gardens
- High Ceilings
- Lift
- Porter

Earl's Court Square, London, SW5



Total area (approx.): 74.3 sq. m (799.7 sq. ft)
Balcony area (approx.): 7.2 sq. m (77.5 sq. ft)