

## Hallam Street, W1W

£2,708 Per calendar month

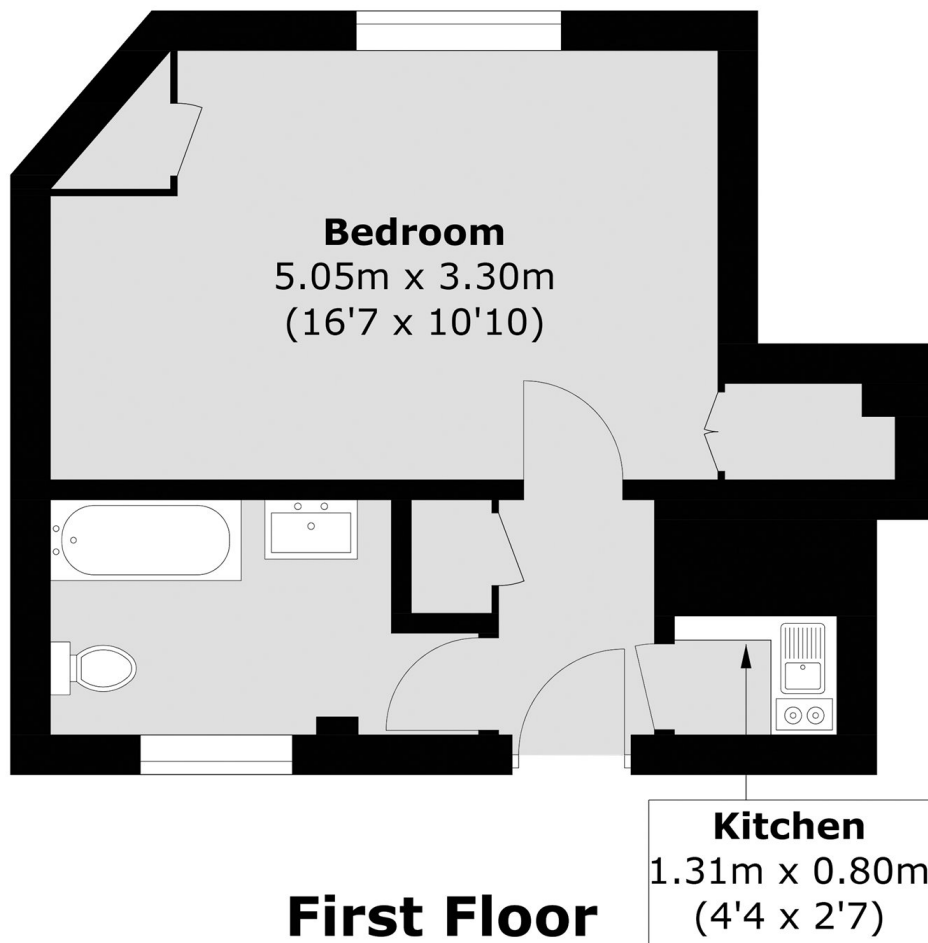
A bright studio apartment on the first floor of a portered building with lift. The studio has a separate kitchen and bathroom.

Hallam Street is located between Portland Place and Great Portland Street. It is within easy access to Marylebone Village as well as the green open spaces of Regent's Park and all the amenities of the West End nearby.

### Features

- Studio Apartment
- Separate Kitchen
- Lift
- Porter
- First Floor
- Period Building

# Hallam Street, London, W1W



Total area (approx.): 28.5 sq. m (306.8 sq. ft)