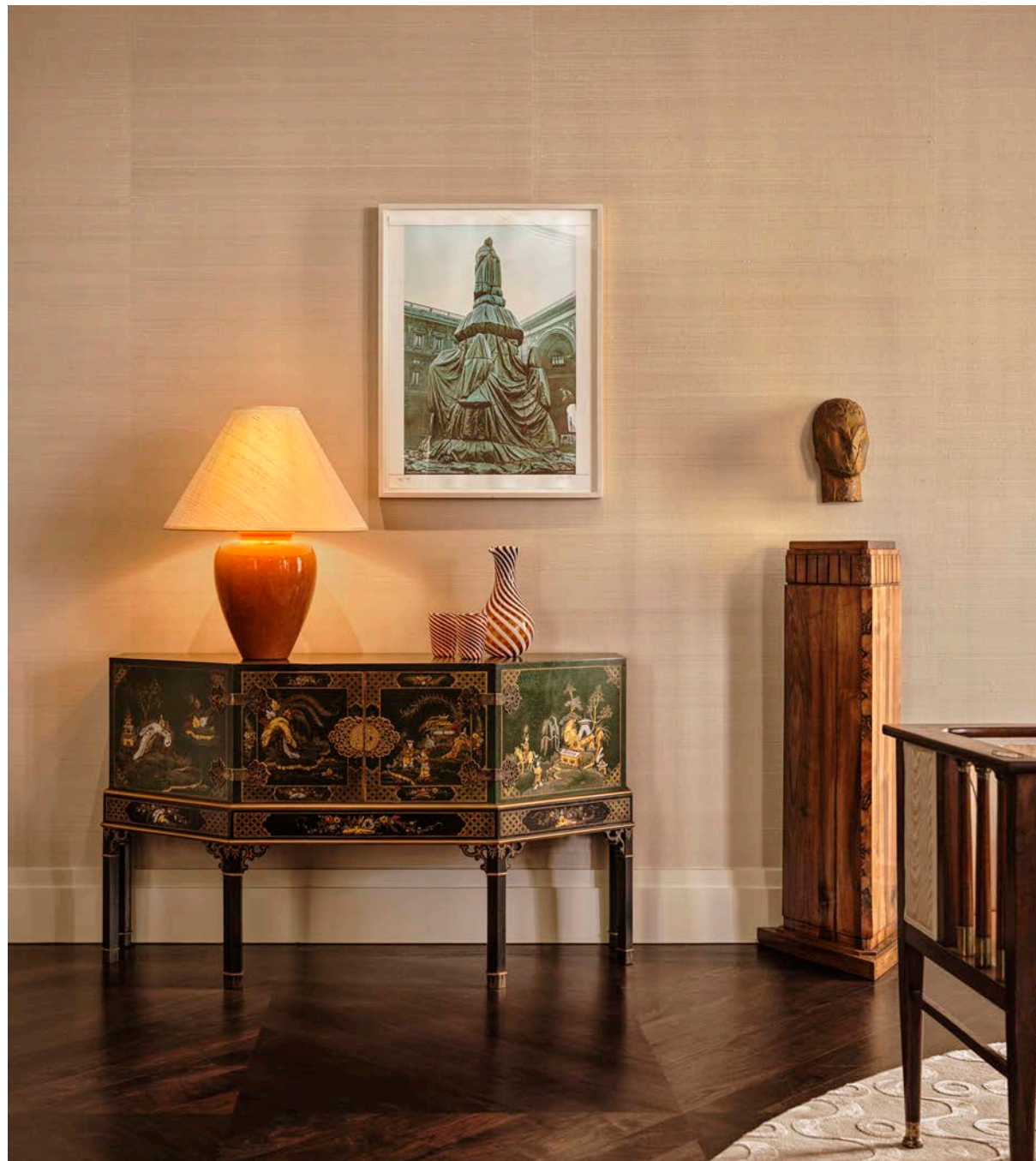
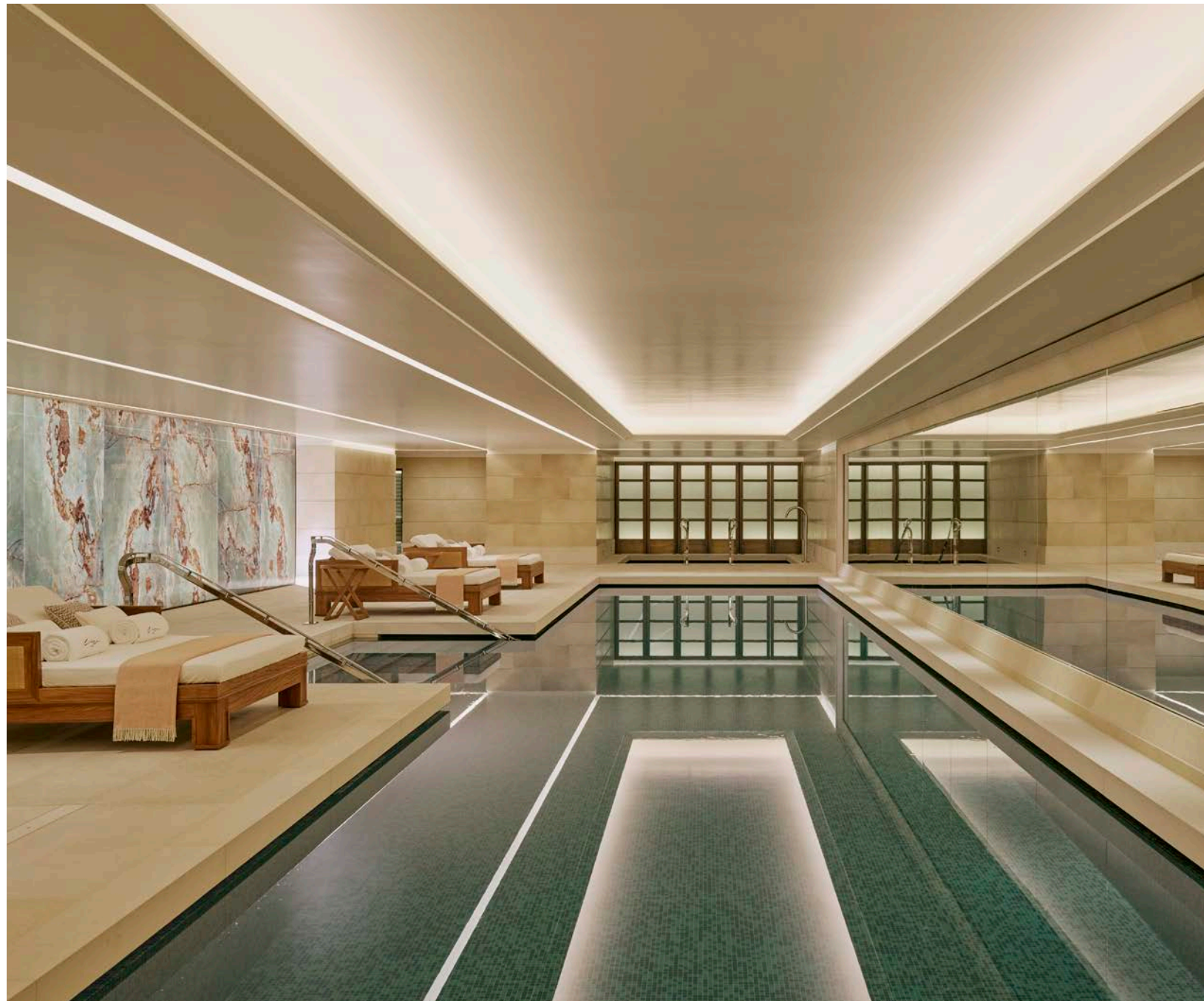


Nº 60

L'Espresso









AN ELEVATED ARRIVAL

## MAYFAIR'S FINEST NEW RESIDENTIAL BUILDING

Originally home to the famed Mirabelle restaurant, this iconic building has long embodied exclusivity and sophistication, hosting many erudite figures throughout its illustrious history.

Inspired by the Art Deco movement of the 1920s and 1930s, it seamlessly blends world-class architecture and thoughtfully designed interiors.

Comprising 32 unique residences, ranging from a spacious studios to luxurious penthouses, it offers a rare opportunity to experience life in this fashionable corner of Mayfair.









## AMENITIES & SERVICES

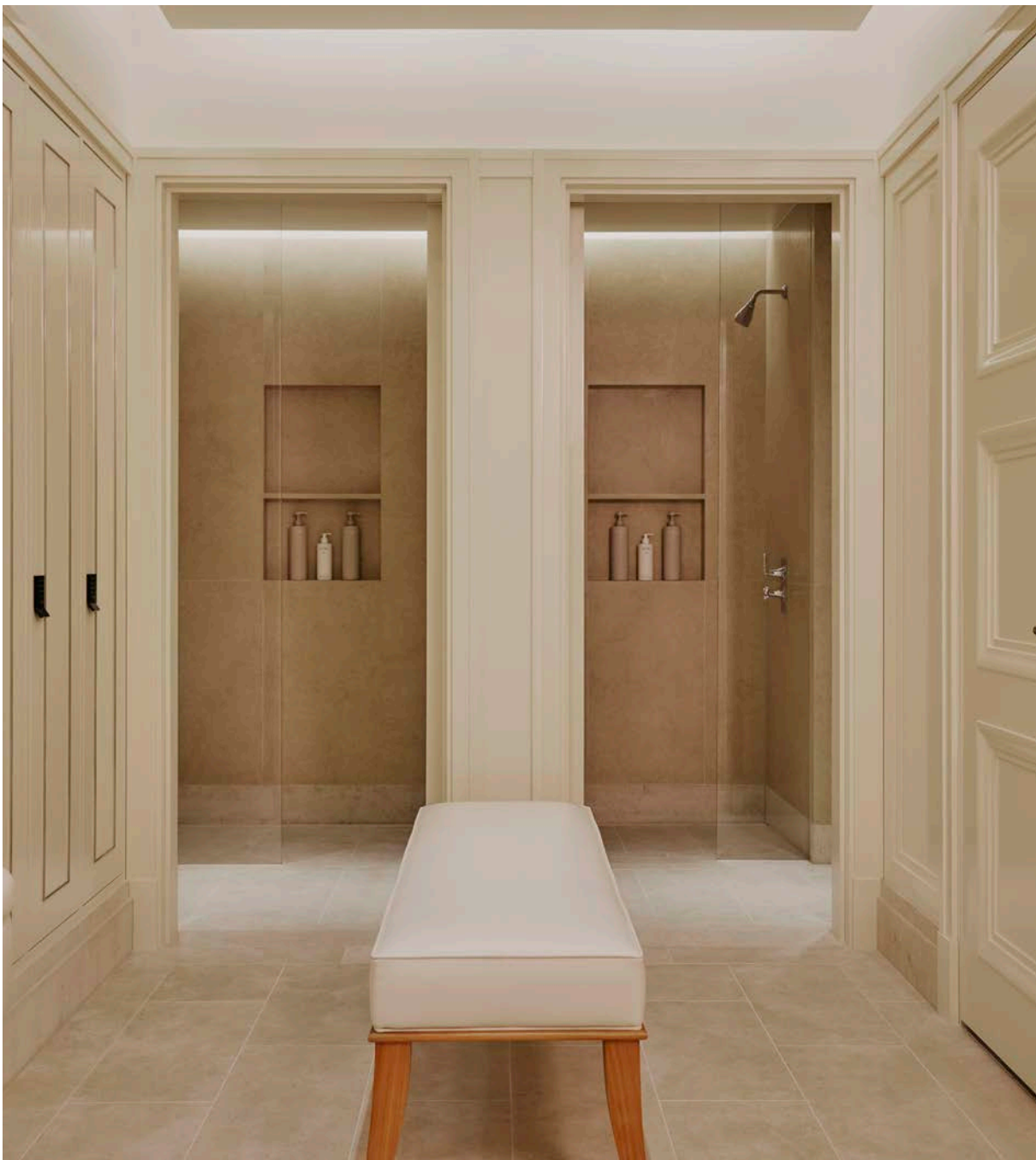
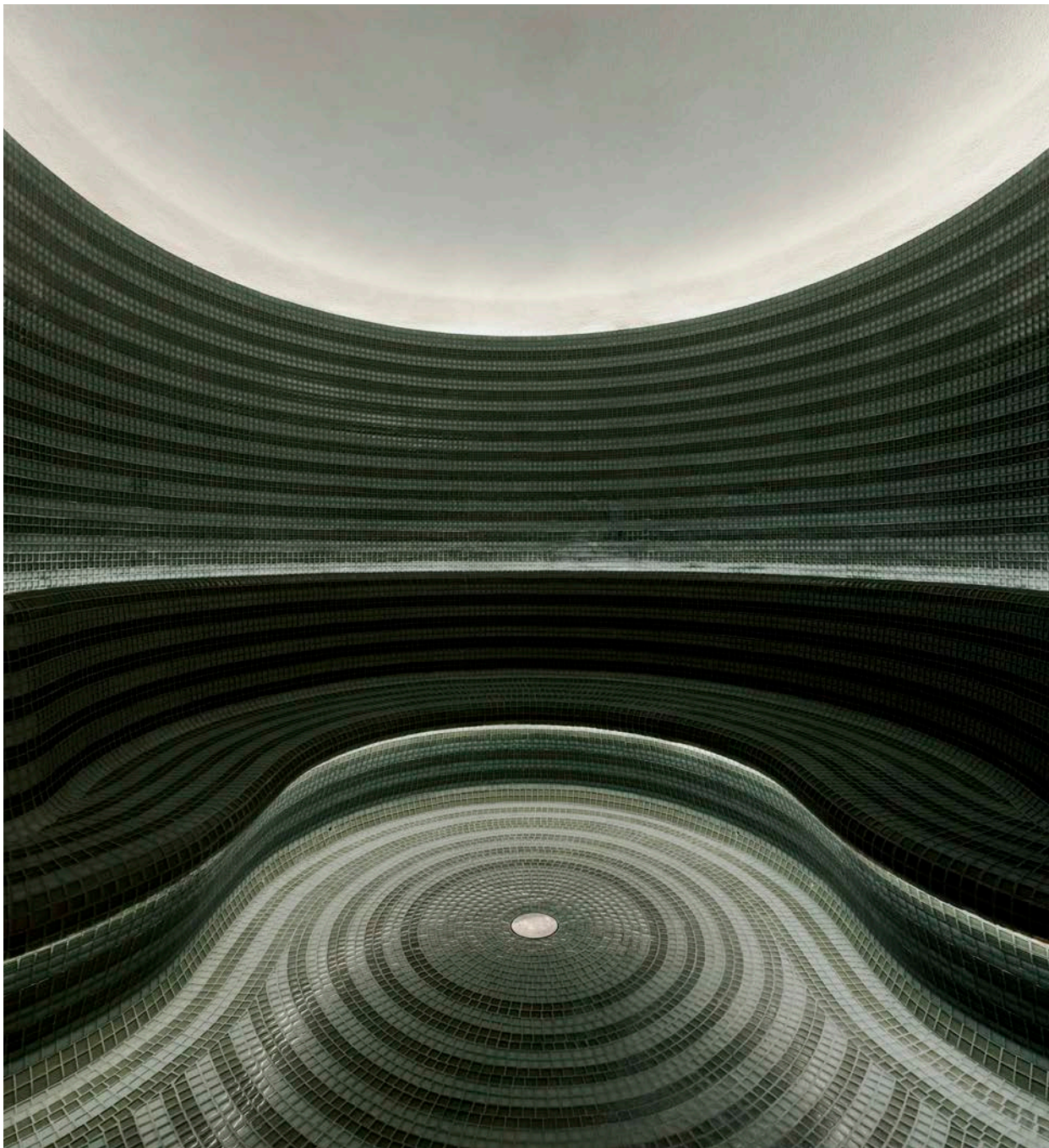
### TO MEET YOUR EVERY NEED

Our expert concierge and dedicated service team are here to welcome you home, ensuring every detail is designed to be tranquil and effortless.

With 24/7 concierge, seamless security and valet services to private underground parking, coming home has never been easier or more welcoming.

The luxury pool and spa area combines elegance and relaxation for residents to unwind and rejuvenate.





AMENITIES & SERVICES

24/7 Concierge and security

20-metre swimming pool

Vitality pool

Steam room

Sauna

Gym

Treatment rooms

Courtyard garden

Meeting room

Secure underground valet parking

Storage room (temperature controlled)





## RESIDENCES

### UNIQUE RESIDENCES DESIGNED TO INSPIRE

A home to suit every taste. 60 Curzon seamlessly blends the building's rich heritage with coveted contemporary design elements.

Ranging from sleek studios to expansive penthouses, many with private outdoor spaces, every residence balances the vibrant energy of Mayfair with the tranquility of home.

To showcase the essence of 60 Curzon, a selection of apartments have been styled by eminent interior designers. They each reflect their vision of refined Mayfair living, highlighting what makes 60 Curzon and its surroundings so special.





RESIDENCES

INTIMATE STUDIOS TO  
STATEMENT PENTHOUSES



Apartment type	Sq ft
1 bedroom apartments	550-900
2 bedroom apartments	1,750-2,500
3 & 4 bedroom apartments	3,500-4,700









HERITAGE & LEGACY

## KIJI, TIMELESS INSPIRATION, MODERN VISION

A new restaurant set across 8,000 sq ft complete with a bar, lounge and private chef room.

The restaurant will showcase the best of Korean cuisine and will be run by the team behind Atomix in New York, recently celebrated as the sixth best restaurant in the world.







## DESIGN & SPECIFICATIONS

### A LEGACY OF CRAFTSMANSHIP

Intricate. Bespoke. Refined.

60 Curzon is the pinnacle of exquisite design, where every detail is meticulously considered.

Inspired by the elegance of Art Deco, it is a masterful collaboration of world-class architects, designers, artists and artisans, who together have created a unique vision of Mayfair life.

The building's façade, defined by graceful verticality and flowing curves, features intricate stonework, bespoke terracotta tiling and bronze accents—a testament to timeless artistry and craftsmanship.





“Behind the building’s crafted exterior lies a complex and finely tuned machine for contemporary living, embracing the culture of the streets’ surroundings.”

Lee Polisano, RIBA, FAIA  
Architect and co-founder of  
PLP Architecture

“I like to create a small universe. From the master plan to the doorknobs, from the trees planted outside to the way people will sit and eat and dance inside.”

Thierry Despont  
Interior architect, artist and designer  
of 60 Curzon



CREATING 60 CURZON

Building architecture	PLP Architecture
Exterior sculpture	David Nash RA
Interior architecture	Thierry Despont
Courtyard garden design	Gustafson Porter + Bowman
Lobby artwork	David Tremlett
Photography	Sasha Gustov, Veerle Evans, Mel Yates



BUILDING SPECIFICATION

EXTERNALS

Façade	Hand-set Portland Stone façade with hand-crafted faïence tiles and bronze-tiled roof
Windows	Triple glazed windows and French doors designed to perform to an exceptionally high acoustic and thermal standard with bronze frames
Entrance	Bespoke bronze residential entrance with a backlit canopy
Terraces & Balconies	10,000 sq ft (930 sq m) of private terraces and balconies

COMMON PARTS

Concierge Lobby	Walls	Bespoke solid timber lacquered panelling
	Floor	Belgian black marble
	Lift	Three residential lifts servicing every residential floor and amenity level

SYSTEMS

Lighting	Fully programmable Lutron lighting system
Heating & Cooling	Underfloor heating throughout. Discreet ventilation, heating and cooling to all habitable rooms
Audio Visual	All apartments have been designed to allow the installation of any audiovisual or home automation system and initial enabling work has been completed to facilitate this
Security	All apartments have been designed to allow the installation of any security system

INTERNAL APARTMENTS

Entertaining Spaces	Doors	Bespoke solid timber lacquered doors with ironmongery designed by Thierry Despont with hand-stitched leather detailing
	Floor	American walnut timber flooring in a bespoke pattern, designed by Thierry Despont
Kitchen	Kitchen Units & Appliances	Thierry Despont kitchen, designed and manufactured specifically for 60 Curzon. Timber lacquered joinery with backlit fabric lined glass doors and bespoke ironmongery
		Calacatta Gold marble counter tops
		Fully integrated appliances by Gaggenau
Bedrooms	Wall	Painted finish
	Floor	Close covered carpet
	Joinery	Base specification apartment joinery designed by Thierry Despont. Show apartments joinery designed by selected design studios.
Principal Bathroom	Walls & Floor	Calacatta Gold marble, timber panelling and backlit feature wall
	Sanitaryware	Sanitaryware by Kohler and Toto
	Taps, Fixtures & Fittings	Taps, fixtures and fittings by Samuel Heath
Guest Bathroom	Walls & Floor	Nero Marquina marble feature wall and floor throughout. Light Emperador marble walls, shower and bath surrounds
	Sanitaryware	Sanitaryware by Kohler and Toto
	Taps, Fixtures & Fittings	Taps, fixtures and fittings by Samuel Heath
Powder Room	Walls & Floor	Painted finish with a Nero Marquina marble feature wall and Nero Marquina marble floors
	Sanitaryware	Sanitaryware by Kohler and Toto
	Taps, Fixtures & Fittings	Taps, fixtures and fittings by Samuel Heath

AMENITIES

Concierge & Security	24-hour concierge and security
Private Courtyard Garden	A private south-facing courtyard garden, designed as an English woodland garden by Gustafson Porter + Bowman
Spa & Wellness	Exclusively for use by residents. The private spa includes a 20 metre swimming pool, vitality pool, fully-equipped gym, sauna, steam room, treatment rooms and changing rooms
Storage Rooms	A selection of private storage rooms with provision for temperature control are available to residents and can be entirely customised to meet their requirements
Parking	Secure underground car park with valet service, electric charging points and car washing facilities. Private drop-off area located on Curzon Street
Residents Meeting Room	A residents-only Club Lounge to provide a flexible space to host meetings, informal or private events
Restaurant	An all-day fine dining restaurant is located on the Ground, Lower Ground and Basement Levels. Residents will benefit from a private entrance to the restaurant and private dining facility

SUPPLIERS

Bronze main entrance door	Fittkau
Hand-glazed terracota tiles	Developed in collaboration with Studio Christine Jetten





LOCATION

LONDON’S ILLUSTRIOUS  
NEIGHBOURHOOD

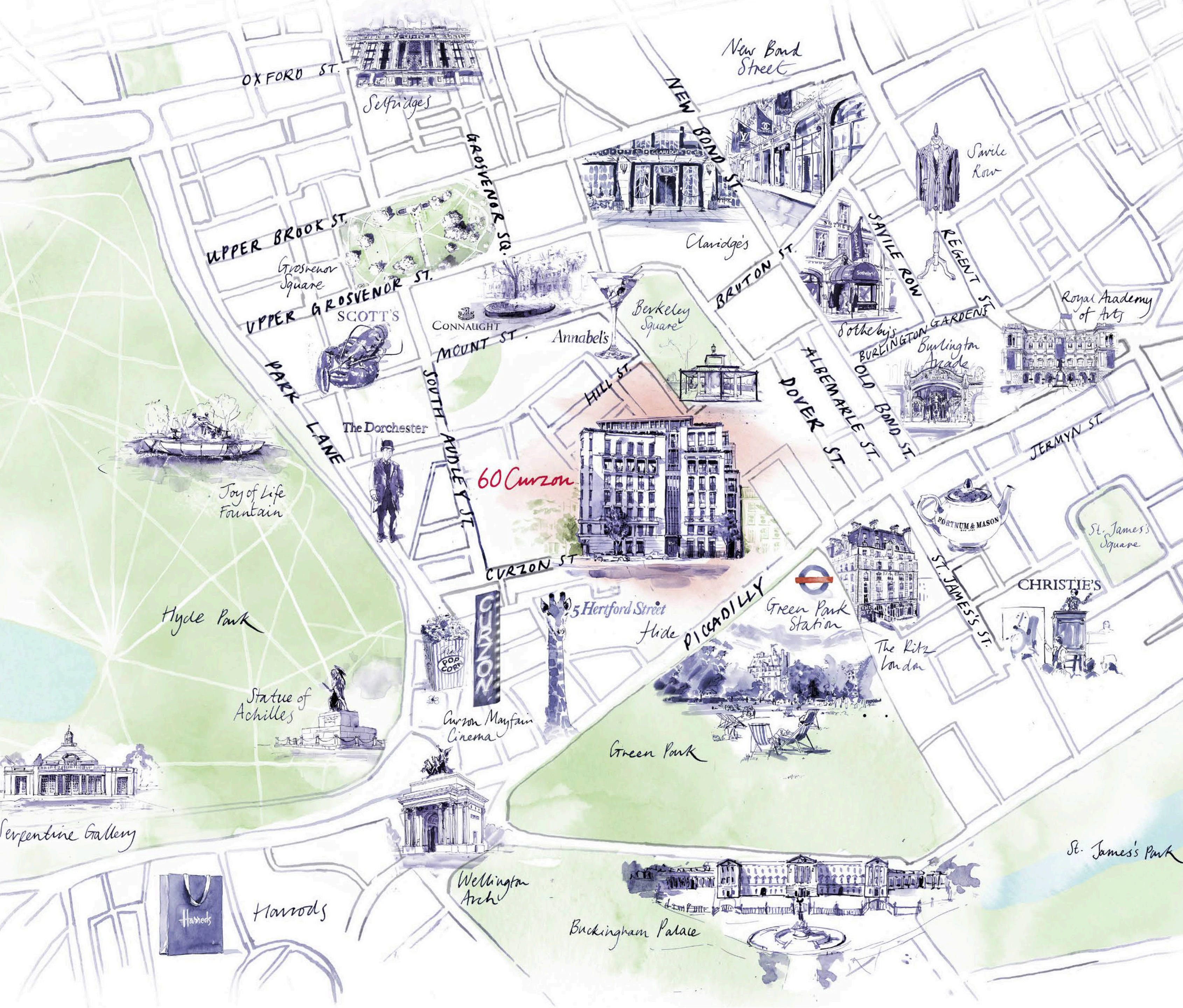
A famous address on a noted street. Mayfair is London’s home of style and culture. Surrounded by the world’s best members’ clubs, galleries and eateries, there is nowhere in the world like it.

By day, wander through tree-lined streets and beautiful parks, or explore the renowned shopping areas of Mayfair and nearby Bond Street.

By night, opulent bars and world-class dining bring energy and excitement to this prestigious London district.







## LOCATION

## PERFECTLY PLACED IN ICONIC MAYFAIR

Nestled in the heart of Mayfair, 60 Curzon offers unrivaled access to London's finest dining, shopping, and green spaces. From Hyde Park to Bond Street, world-class experiences are just moments away, blending timeless elegance with modern city living.





## MAYFAIR'S MOST EXCLUSIVE ADDRESS

ENQUIRE

**Knight Frank**  
PCLD@knightfrank.com  
+44 (0)20 7861 5321



60 Curzon Street  
Mayfair London W1J 8PD

@60curzon

60curzon.com