



Onslow Gardens
South Kensington, SW7

CHESTERTONS





An immaculately presented three bedroom penthouse apartment arranged over the third and fourth floor (with lift) of this period building. This property is finished to exacting standards throughout and benefits from access to the communal gardens.

- An immaculate three double bedroom penthouse over two floors
- Air Cooling, access to communal gardens, electric blinds
- Fully furnished to a high standard throughout
- Sought-after location in South Kensington

£8,000 pcm

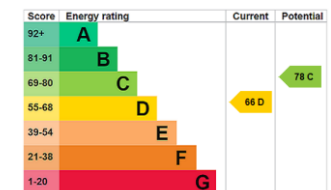
Additional tenant charges apply (fees apply to non-AST tenancies only)

Tenancy Agreement Fee: £300

References per Tenant/Guarantor: £60

Inventory check (approx. £100 – £250 inc. VAT)

chestertons.co.uk/property-to-rent/applicable-fees



Minimum Term: 12 months
Deposit Required: £11,076.92
Local Authority: Kensington and Chelsea
Council Tax Band:
EPC Rating: D
Furnished, Unfurnished

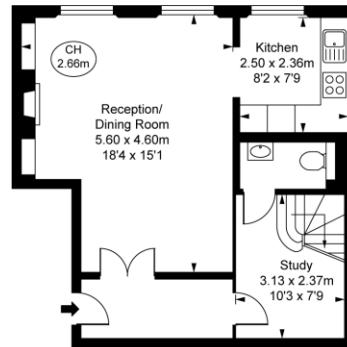
Chestertons South Kensington Lettings

44-48 Old Brompton Road
 South Kensington
 London
 SW7 3DY

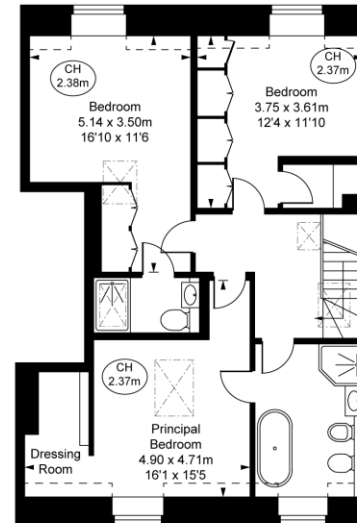
southkensingtonlettingsusers@chestertons.co.uk
 02075891244

Onslow Gardens,
South Kensington, SW7
Approximate Gross Internal Area
114.30 sq m / 1,230 sq ft

(Including restricted height
under 1.5m [- - - - -])
(CH = Ceiling Heights)



Third Floor
Approximate Gross Internal Area
45.00 sq m / 484 sq ft



Fourth Floor
Approximate Gross Internal Area
69.30 sq m / 746 sq ft

The plan is not to scale. It is for guidance and not for valuation purposes.
All measurements and areas are approximate only, and have been prepared in accordance with the current edition of theRICS Code of Measuring Practice.
© Furbair Performance

Chesterton UK Services Limited trading as Chestertons for themselves and for the vendor of this property whose agents they are, give notice that (i) these particulars do not constitute any part of an offer or contract, (ii) all statements contained within these particulars are made without responsibility on the part of Chestertons or the vendor, (iii) whilst made in good faith, none of the statements contained within these particulars are to be relied upon as a statement or representation of fact, (iv) any intending purchasers must satisfy themselves by inspection or otherwise as to the correctness of each of the statements contained within these particulars, (v) the vendor does not make or give either Chestertons or any person in their employment any authority to make or give representation or warranty whatsoever in relation to this property. Wide angle lenses may be used. ©Copyright Chestertons | Chesterton Global Ltd | Registered Office 5th Floor, The Lantern, 75 Hampstead Road, London, NW1 2PL Registered Company Number 05334580.



This paper is
100% recyclable