



PCM

£1,700 PCM

Cudworth Street

, E1 5PH

Top floor 1 bedroom apartment, set within a gated private development with access to communal garden.

The property comprises of a spacious reception room, with dual aspects and Juliet balcony, large modern fitted kitchen, tiled bathroom suite and a good size double bedroom.

The communal garden is well kept, with also the added benefit of secure bike storage.

Located just a few moments from Bethnal Green Underground Station and Bethnal Green Overground with Brick Lane and Shoreditch just a short walk away.

12 month contract: breakclause subject to offer

5 weeks deposit: £1,961

council tax: Band C

Unfinished

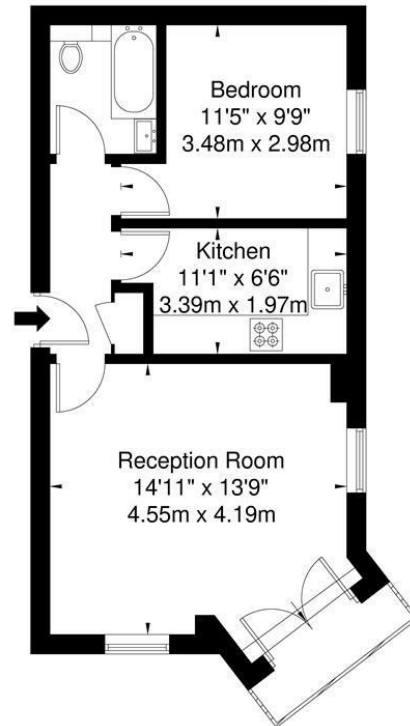
Available March





Bartholomew Square, Cudworth Street, Whitechapel, E1 5PH

Approx Gross Internal Area = 43.4 sq m / 467 sq ft



Third Floor

Ref

Copyright

**BLEU
PLAN**

The Floor plan is not to scale and measurements and areas shown are approximate and therefore should be used for illustrative purposes only. The plan has been prepared in accordance with the RICS code of Measuring Practice and whilst we have confidence in the information produced it must not be relied on. If there is any aspect of particular importance, you should carry out or commission your own inspection of the property.

Copyright © BLEUPLAN

Energy Efficiency Rating		
	Current	Potential
Very energy efficient - lower running costs		
(92 plus) A		
(81-91) B		
(69-80) C	74	76
(55-68) D		
(39-54) E		
(21-38) F		
(1-20) G		
Not energy efficient - higher running costs		
England & Wales	EU Directive 2002/91/EC	

Agents Note: Whilst every care has been taken to prepare these particulars, they are for guidance purposes only. All measurements are approximate and are for general guidance purposes only and whilst every care has been taken to ensure their accuracy, they should not be relied upon and potential buyers/tenants are advised to recheck the measurements

OFFICE ADDRESS
88 Cheshire Street
London
E2 6EH

OFFICE DETAILS
0207 739 6969
info@peachproperties.com
www.peachproperties.com