



Let **UK** Home

1 Bedrooms

Flat - Studio

Located in Wood
Green, London

£1,800 Per Month



info@letukhome.co.uk

<https://www.letukhome.co.uk/>

01795 358 886



5 Brook Road Wood Green, London

N8 0FT



Let UK Home are excited to offer this spectacular studio apartment in the heart of Azure House part of the Clarendon Road development.

This stunning apartment features a meticulously designed open-plan kitchen, dining and living area leading to a private balcony. The bedroom comes with built-in wardrobes, complemented by a spacious family bathroom.

The residents of this development will benefit from gymnasium, swimming pool, resident meeting room, leisure room, physiotherapy room, yoga room, sauna room, concierge service, etc.

The development is located within walking distance of two underground and two national rail stations. The Piccadilly Line and National Rail provide direct access to many of London's famous landmarks and universities within half an hour of travel from Wood Green, Turnpike Lane, Hornsey, or Alexandra Palace stations.

The educational resources around the development are also extremely abundant. With convenient access via rail transit, one can easily reach famous universities such as Central St Martin, University College London (UCL), and the London School of Economics (LSE), making daily commuting very convenient.

The development is surrounded by four major commercial areas, including Wood Green, Hornsey, Crouch End and Muswel Hi. Supermarkets, cafes, restaurants, bars, shops and banks can be found everywhere to meet your daily life and social needs.

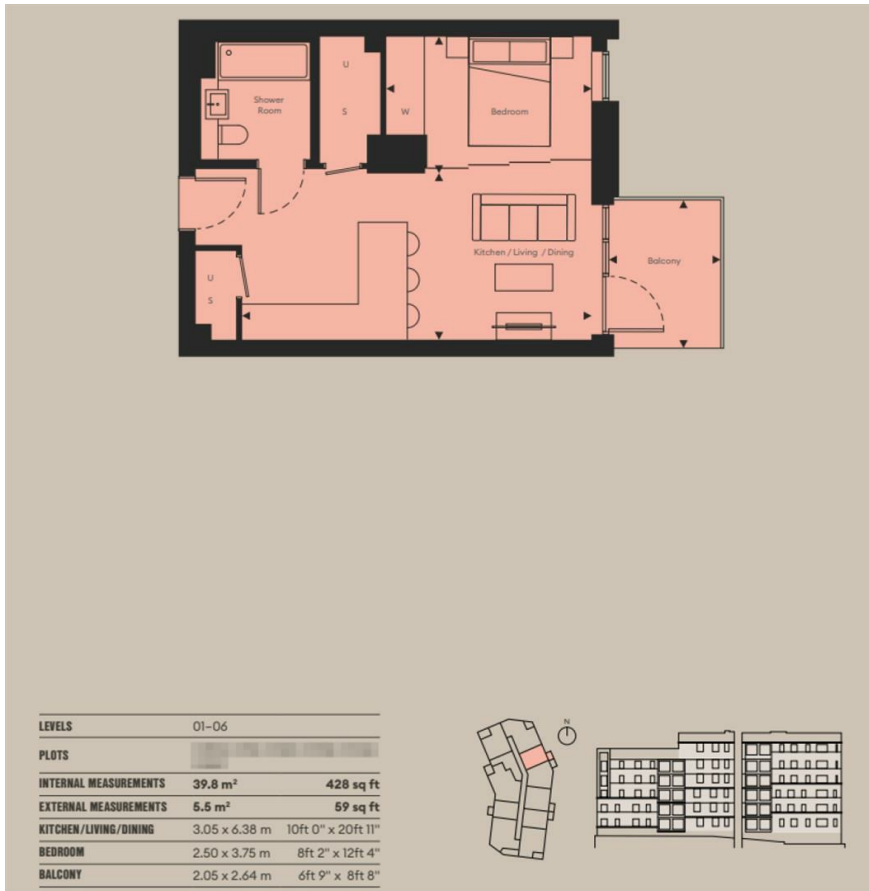
5 Brook Road Wood Green, London

£1,800 Per Month



- 5th Floor
- Co-working Space
- The Gym & Yoga Room
- Treatment Room
- Virtual Tour Available
- Concierge Service & 24h Security
- Swimming Pool
- Residents Lounge
- Sauna & Steam Room
- EPC Rating: B





Let **UK** Home

3F 2 Eastbourne Terrace
 Paddington
 London
 W2 6LG

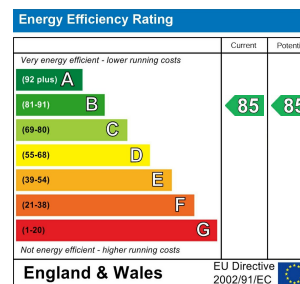
01795 358 886

info@letukhome.co.uk

Council Tax Band: C

Local Authority:

Agents Note: Whilst every care has been taken to prepare these particulars, they are for guidance purposes only. All measurements are approximate and are for general guidance purposes only and whilst every care has been taken to ensure their accuracy, they should not be relied upon and potential buyers/tenants are advised to recheck the measurements.



<https://www.letukhome.co.uk/>