



Main Street, Leicester, LE9 1UW

**SHELDON
BOSLEY
KNIGHT**

LAND AND
PROPERTY
PROFESSIONALS

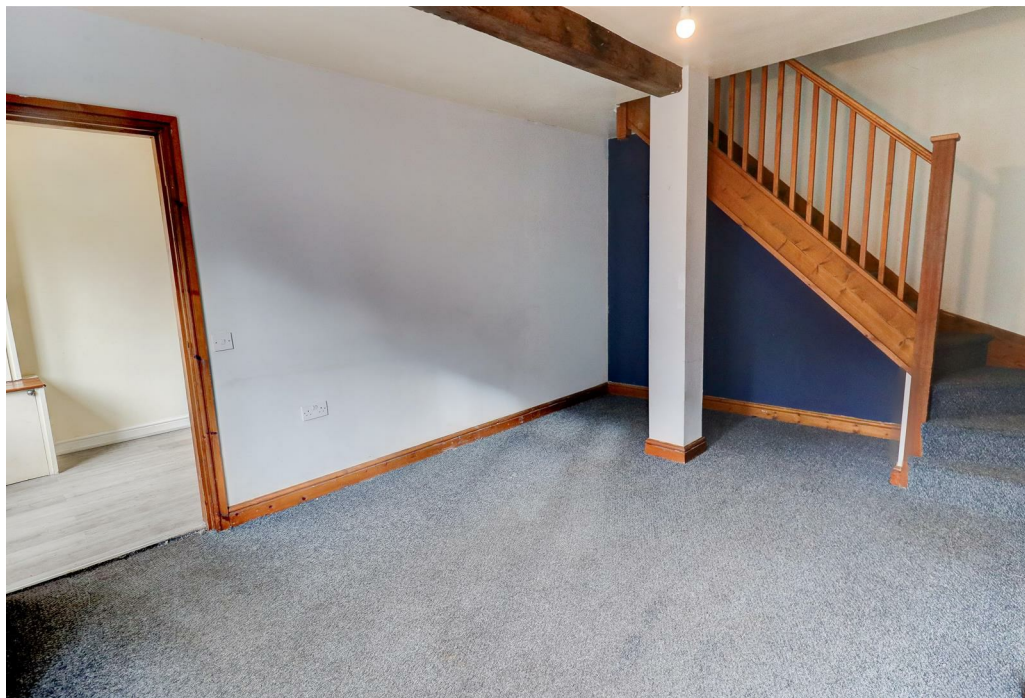
Property Description

***AVAILABLE 25TH

FEBRUARY***Deposit Alternative

Available*** This two bedroom, terraced property is located in the sort after village of Cosby, a charming and picturesque community nestled in the heart of Leicestershire. With its quaint streets, historic buildings, and welcoming atmosphere, the village of Cosby offers residents a serene escape from the frenetic pace of city living, yet it's still close enough to all the urban goodies you need. The property in brief compromises of an entrance into a neutral kitchen, complete with integrated oven, hob and extractor fan. To the left, you'll discover an inviting yet snug lounge area. Upstairs, you'll find a family bathroom complete with a shower above the bath, along with a spacious double bedroom featuring a convenient storage cupboard. Adjacent is a cosy second bedroom, ideal for a single occupant or as a versatile space. With allocated off road parking for one vehicle and on road parking available this property is offered UNFURNISHED. Council Tax Band A. Energy Rating C.







Key Features

- Available 25th February
- Deposit Alternative Available
- Cosby, Leicestershire
- Terraced House
- Two Bedrooms
- Unfurnished
- No Garden Included
- Allocated and On Road Parking Available
- Council Tax Band A
- Energy Rating C

£825 PCM