



## Horn Lane, W3

£646 Per week

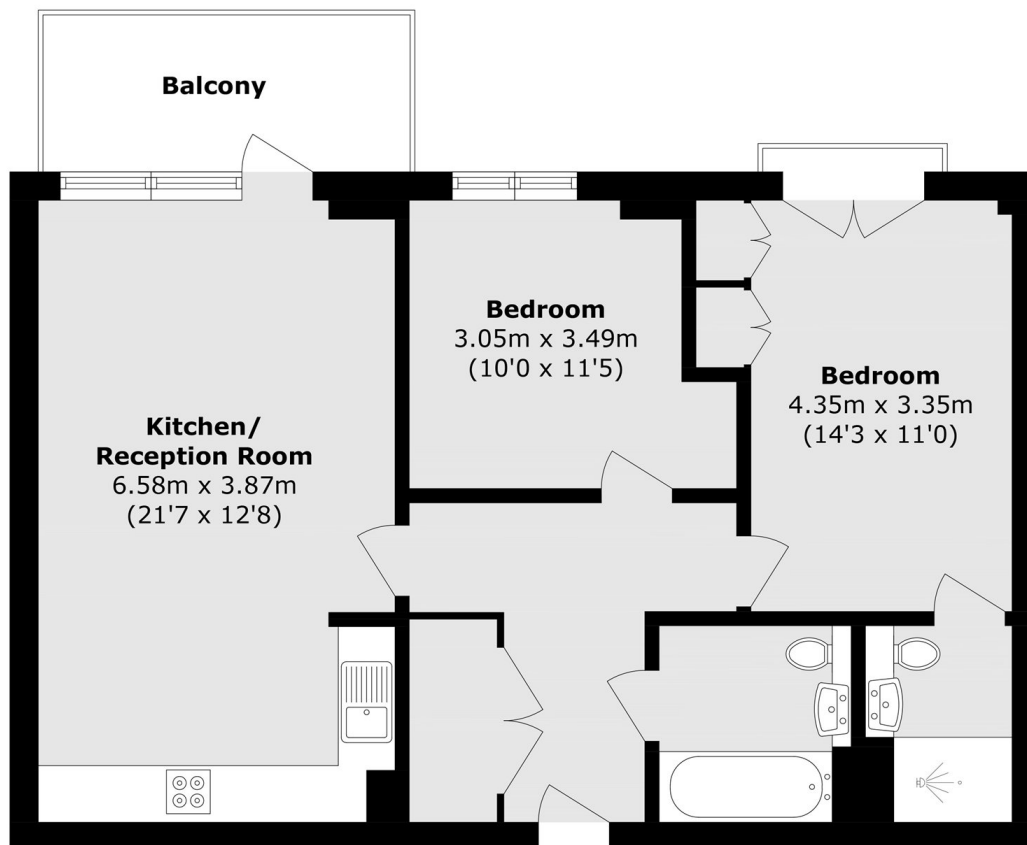
A two double bedroom apartment in this brand new development comes with two bathrooms, private balcony, communal gardens, communal lounge and gym on site. Ideal for two professional sharers or a small family.

Horn lane offers great transport links with the Acton Main Line on your doorstep as well as the North Acton Central Line a short walkaway.

### Features

- Brand New Development
- Two Double Bedrooms
- Two Bathrooms
- Communal Lounge
- On Site Gym
- Ample Storage

Horn Lane,  
London, W3



Total area (approx.): 67.7 sq. m (728.7 sq. ft)  
Balcony area (approx.): 6.8 sq. m (73.2 sq. ft)