



Offers over £150,000

Hescombe Cottage,  
Stronsay, KW17 2AG

Harcus.



Hescombe Cottage is a delightful two-bedroom detached cottage with a separate garage. Situated in a peaceful location on the picturesque island of Stronsay, it offers a serene escape.

The organic wildlife garden is rich with mature trees and shrubs, enhanced by beds and borders displaying a variety of flowers when in bloom, providing a haven for wildlife lovers and gardening enthusiasts alike.

The accommodation includes a vestibule, hall, living room, dining kitchen, bathroom, and two bedrooms.

 2 bedroom

 1 bathroom

 1 public room

### Vestibule

1.81m x 1.44m (5ft 11" x 4ft 9")

The vestibule has a deep shelved storage cupboard, window and vinyl flooring.

### Hall

3.65m x 1m (12ft x 3ft 3")

The hall has an exposed wood floor, deep airing cupboard and a radiator.

### Living room

4.33m x 3.82m (14ft 3" x 11ft 1")

This welcoming living room is bright and airy, thanks to three windows that allows natural light to flood in, creating a warm and inviting atmosphere. It benefits from wood flooring and a feature focal point in the form of a multi-fuel stove with a tiled hearth and timber surround. Television and a telephone point. Two radiators.





### Kitchen/Diner

4.33m x 3.37m (14ft 3" x 11ft 1")

The kitchen features both floor and eye-level units, offering a generous amount of worktop space. It is equipped with plumbing for a washing machine and a gas cooker. The oil-fired Stanley Superstar range cooker efficiently heats radiators throughout the home. There's ample space for a fridge-freezer, and the wood flooring complements the room beautifully. Natural light flows in through windows at both the front and rear of the property. Space for a dining table and chairs.





### **Bathroom**

2.54m x 1.78m (8ft 4" x 5ft 10")

The bathroom features a three-piece white suite complete with a shower above the bath. It has vinyl flooring and a modestly-glazed window. Radiator.

### **Bedroom 1**

4.29m x 2.43m (14ft 1" x 8ft) at most

This cosy double bedroom offers ample space for a bed and additional furnishings. It features vinyl flooring, complemented by light, calming decor. Window overlooking the garden to the front. Television point. Radiator.





### **Bedroom 2**

3.28m x 3.17m (10ft 9" x 10ft 5")

This inviting double bedroom features neutral décor and beautiful wood flooring. It includes a window that offers a view of the front garden. Radiator.

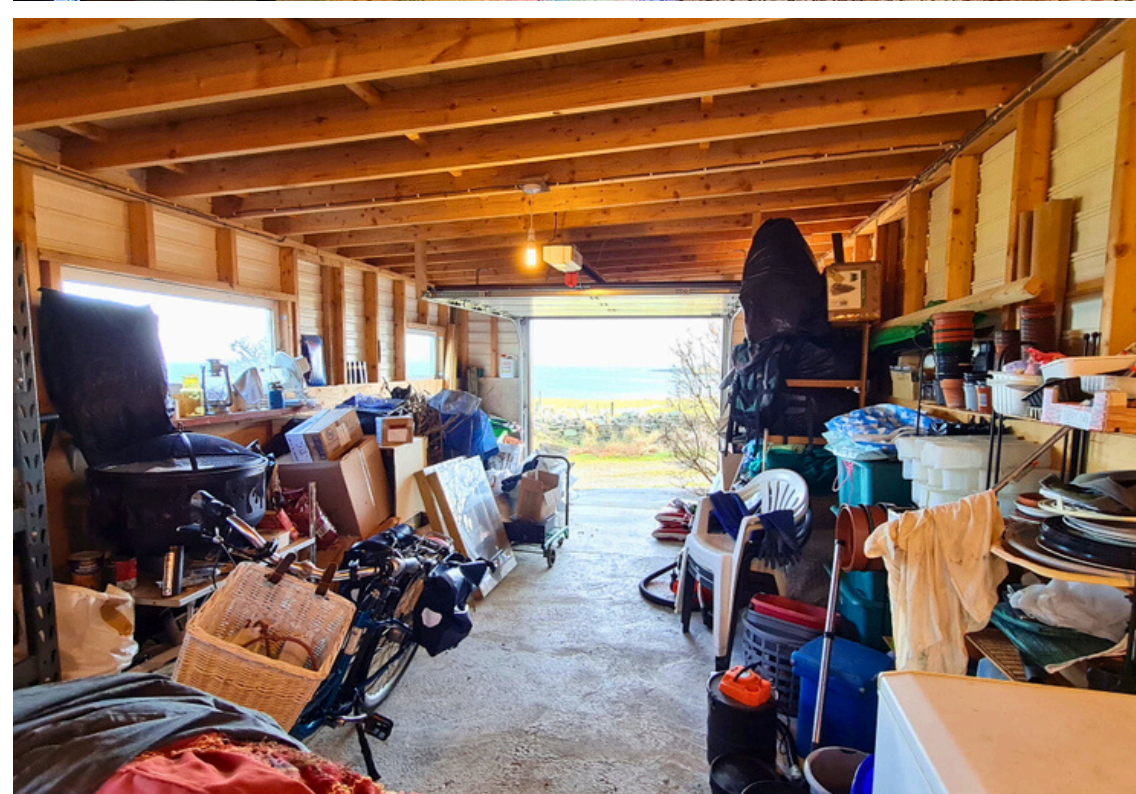
### **Garage**

7.25m x 3.69m (23ft 9" x 12ft 1")

The garage is clad with uPVC lining boards and has uPVC double glazed windows, an access door and an electric up and over garage door. Power and lighting.

### **Lean-to-Greenhouse**

1.9m x 1.6m (6ft 3" x 5ft 3")



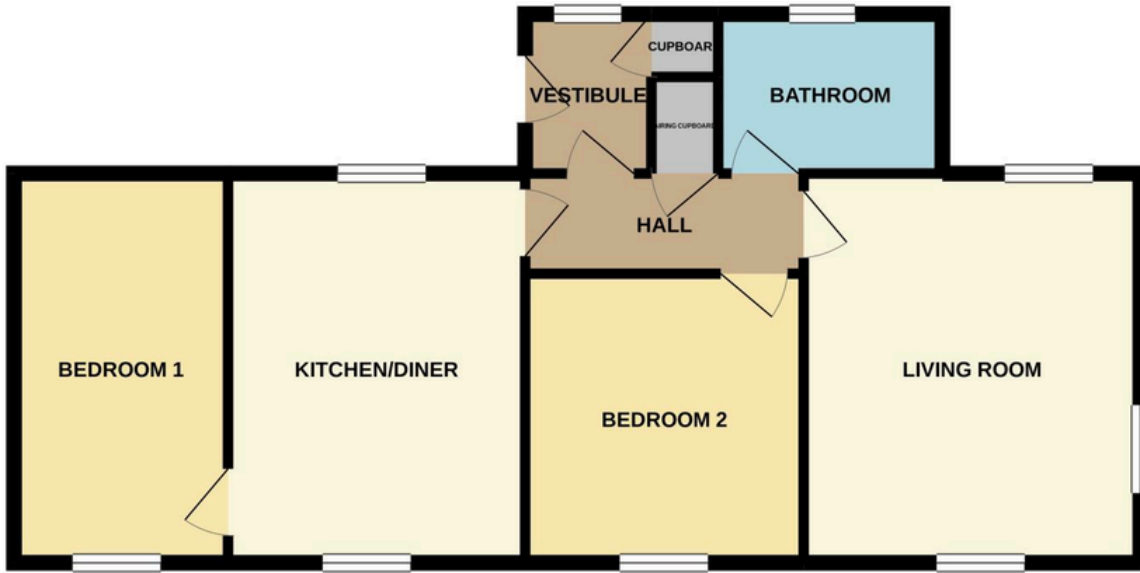


The owner, although advancing in age and no longer able to tend to the garden with the same vigour, has devoted her time and energy to transforming this organic garden into a wildlife sanctuary. It features a tranquil pond and an impressive variety of plants, including willow trees, buddleia, fuchsias, and roses, alongside a lively assortment of seasonal flowers such as daffodils, crocuses, lily of the valley, betony, and many others.

An access track leads to the property with lovely views over the surrounding farmland and Mill Bay with Whitehall village in the distance.

**Stronsay has miles of coastline, dramatic seascapes and landscapes and tranquil beaches to enjoy. Connected to the Orkney mainland by scheduled ferry and air services. Amenities on the island include a junior high school, hotel, post office, healthy living centre and general stores.**





Garden in bloom



Hescombe Cottage has oil central heating and uPVC double glazed windows.

Viewing by Arrangement.

### Services

Mains water and electricity, satellite TV, broadband and phone,  
Septic tank

### Council Tax

Band A. This may be reassessed when the property is sold.

### Energy Performance Certificate

Band F.

### Fixtures & fittings

All floor coverings are included in the sale.

### Price

Offers over £150,000

### Interested parties

Please note your interest to Harcus Law.

### Offers

Written offers should be submitted to Harcus Law.

## Arrange a viewing

### Contact us

Harcus Law  
13 Bridge Street Kirkwall, Orkney  
KW15 1HR

Opening hours:

Monday to Friday 09:00 - 17:00

Closed for an hour 13:00 - 14:00



01856 877 866



[enquiries@harcuslaw.co.uk](mailto:enquiries@harcuslaw.co.uk)

Harcus Property has produced the particulars of this property, including all photographs & measurements. They are intended to be a guide for prospective purchasers and are believed to be truthful as of April 2026. All measurements are approximate sizes only. Harcus Property will take no responsibility or liability for any mistakes or omissions made or any consequences thereof. The vendor maintains the right to withdraw the property from the market.