



Knutsford
Legh House, Hollow Lane



Knutsford, WA16 8WB

Hollow Lane

£250,000



The Property

This beautifully presented two-bedroom apartment has been lovingly maintained and improved by the current owner and offers contemporary living accommodation within a popular development in the heart of the town, the ideal property for a first-time buyer or buy-to-let investor. The apartment is positioned at the front of the building forms part of the second floor of the development with a generous open aspect with tree line views towards Hollow Lane. Particular mention must be made of the open plan living dining kitchen and the generous master bedroom with en-suite shower room.

Externally the property is approached via a tarmac driveway and car park leading to the secure, gated parking and visitor parking. Stairs and lift provide access to the second floor.

Directions

From the roundabout in Canute Square travel along King Edward Road (A50). At the traffic lights turn left down Adams Hill passing the rail station. At the next lights turn left up Hollow Lane where the entrance to Legh House will be seen on your left.

- A superb second floor apartment
- Situated within a short stroll of Knutsford town centre & Tatton Park
- Excellent train links into Manchester and Chester within walking distance from apartment.
- Living dining room with Juliet balcony
- Kitchen with fitted appliances
- Two double bedrooms
- Two bathrooms (one en-suite)
- Beautiful communal gardens
- Secure allocated parking space and ample visitor parking

Postcode – WA16 8WB

EPC Rating – C

Tenure – Leasehold – 999yr lease from 2001

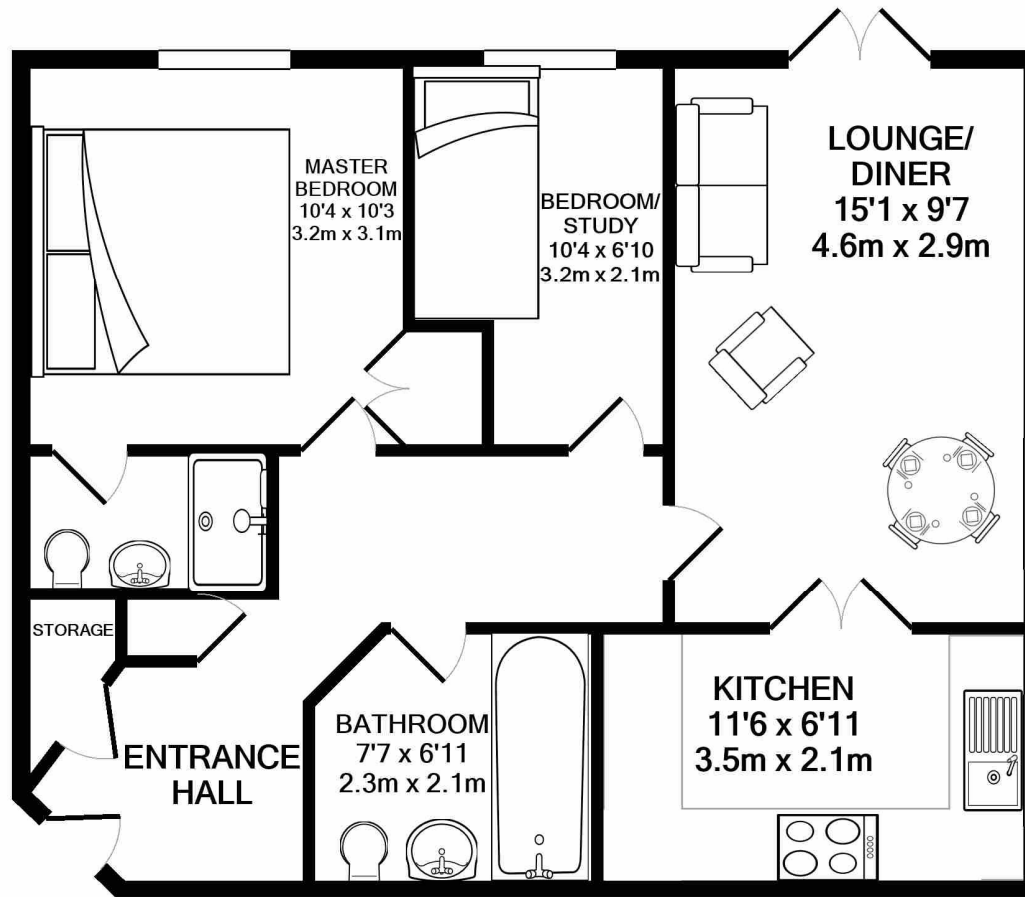
Local Authority – Cheshire East

Council Tax – Band C

Service Charge – £2,300.00 per annum

Ground Rent – £97.50 per annum





TOTAL APPROX. FLOOR AREA 583 SQ.FT. (54.1 SQ.M.)

Whilst every attempt has been made to ensure the accuracy of the floor plan contained here, measurements of doors, windows, rooms and any other items are approximate and no responsibility is taken for any error, omission, or mis-statement. This plan is for illustrative purposes only and should be used as such by any prospective purchaser. The services, systems and appliances shown have not been tested and no guarantee as to their operability or efficiency can be given

Made with Metropix ©2020

103 King Street, Knutsford, Cheshire, WA16 6EQ

01565 654 000

E: info@irlamsestateagents.co.uk

www.irlamsestateagents.co.uk

I1021_ Printed by Ravensworth 01670 713330

Irlams (Estate Agents) Ltd for themselves and for the vendors or lessors of this property whose agents they are give notice that:

- (a) The particulars are set out as a general outline only for the guidance of intending purchasers or lessees, and do not constitute, nor constitute part of, an offer or contract;
- (b) All descriptions, dimensions, references to condition and necessary permissions for use and occupation, and other details are given in good faith and are believed to be correct but any intending purchasers or lessees should not rely on them as statements or representations of fact, but must satisfy themselves by inspection or otherwise as to the correctness of each of them;
- (c) No person in the employment of Irlams (Estate Agents) Ltd has any authority to make or give any representation or warranty whatsoever in relation to this property.

