



**RE/MAX**  
Prime Estates



**50 Cecil Street, Stourbridge, DY8 1XG**  
**Offers in the region of £250,000**

Being positioned in the heart of Stourbridge's "Old Quarter", this charming mid-terrace house presents an excellent opportunity for both first-time buyers and those looking to downsize. With two inviting reception rooms, this property offers ample space for relaxation and entertaining. The two well-proportioned bedrooms provide a comfortable retreat, with the added benefit of a 'Jack & Jill' style bathroom.

To the rear, a pleasantly landscaped garden with sheltered deck area and garden building to the rear

Stourbridge is known for its vibrant community and excellent local amenities, including shops, schools, and parks, all within easy reach. This location is perfect for those who appreciate a blend of suburban tranquillity and accessibility to urban conveniences.

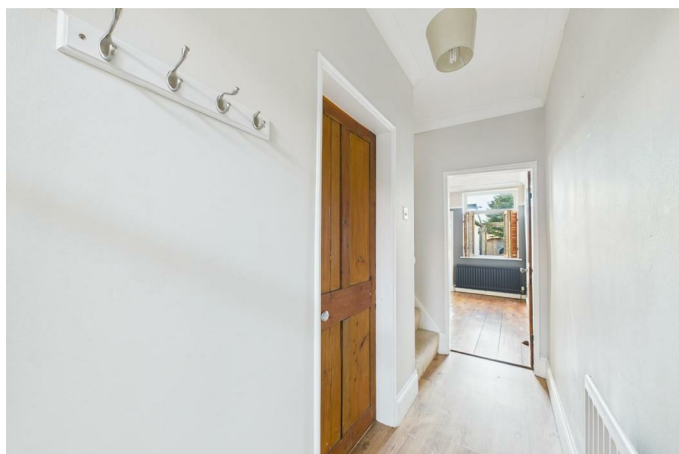
This delightful home is ready to welcome its new owners, providing a blank canvas to create your ideal living space, and is offered with no onward chain. Do not miss the chance to view this property and discover the potential it holds.

## Approach



With a wrought iron fence and gate, traditional wooden front door offering access to;

## Entrance Hall



With a door leading from the front, doors to various rooms, stairs ascending to the first floor and a central heating radiator

## Living Room 11'8" x 8'9" (3.57 x 2.69)



With a door leading from the entrance hall, fireplace with decorative surround and hearth, a double glazed window to the front and a central heating radiator

## Lounge 11'10" x 12'3" (3.61 x 3.74)



With a door leading from the entrance hall, a door leading to the cellar, opening to the kitchen, a decorative fire, a double glazed window to the rear with shutters and a central heating radiator

## Kitchen 14'5" x 7'1" (4.40 x 2.16)



With an opening from the lounge, fitted kitchen with a range of wall and base units with worktops, tiled splashbacks, sink with mixer tap and drainer, integrated oven and hob with extractor above, a door to the side offering access to the rear garden and a double glazed bi-folding patio door to the rear

## Landing

With stairs ascending from the entrance hall, doors to various rooms



Where such introductions are made, please note the following:

**Conveyancing Referrals:**

Should you choose to instruct a solicitor or licensed conveyancer introduced by us, please be aware that RE/MAX Prime Estates may receive a referral fee for this introduction. This fee is typically up to £200 and is paid directly to us by the conveyancing firm. This fee is not an additional cost to you and does not affect the quote or service you receive. We only recommend firms we believe offer a high standard of service. You are under no obligation to use any of the professionals we recommend and are free to choose an alternative provider.

**Financial Services Referrals:**

If we introduce you to an independent financial advisory firm, and you proceed with their services, RE/MAX Prime Estates may receive a referral fee averaging £218 per completed case. This referral fee is paid by the financial advisory firm and does not affect the fees or products offered to you. As with all our recommendations, you are under no obligation to proceed with any advisor we introduce.

We are happy to provide further details on referral arrangements upon request.

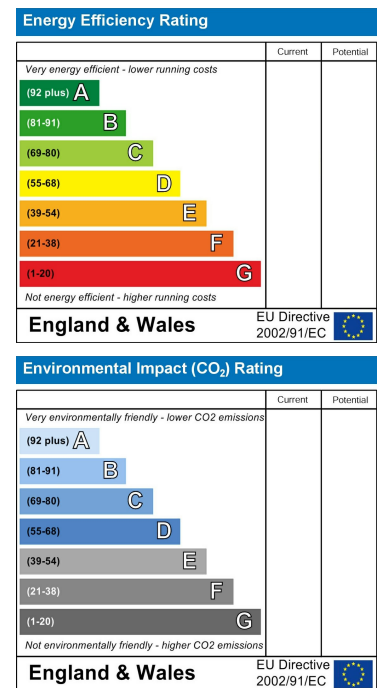
# Floor Plan



# Area Map



# Energy Efficiency Graph



These particulars, whilst believed to be accurate are set out as a general outline only for guidance and do not constitute any part of an offer or contract. Intending purchasers should not rely on them as statements of representation of fact, but must satisfy themselves by inspection or otherwise as to their accuracy. No person in this firm's employment has the authority to make or give any representation or warranty in respect of the property.

Stourbridge, West Midlands, DY8 1DX

Tel: +44 (0) 1384 438457 Email: prime.estates@remax.uk <https://remax.uk/locations/RE-MAX-Prime-Estates>