



25 Cecil Street
Kettering, NN14 6EZ



Simpson Ellson

Well-Proportioned 3-Bedroom End-Terrace Home – Ideal for First-Time Buyers or Growing Families

Offered to the market with no onward chain, this spacious and well-proportioned three-bedroom end-terrace property offers excellent accommodation for a growing family and is ideally situated within walking distance of the high street, where you'll find a variety of independent shops, restaurants, pubs, and gift stores.

Offering fantastic potential, this home is perfect for first-time buyers or anyone looking to put their own stamp on a property and create their ideal living space.

The ground floor features a bright and welcoming lounge with a bay window and charming log burner, creating a cosy focal point. There is also a separate dining room, providing an excellent space for entertaining, which leads through to the kitchen. The kitchen benefits from a separate utility room and a convenient downstairs WC.

Upstairs, the property offers three generously sized bedrooms and a family bathroom.

Externally, the home boasts a good-sized rear garden, offering plenty of scope for landscaping and personalisation.

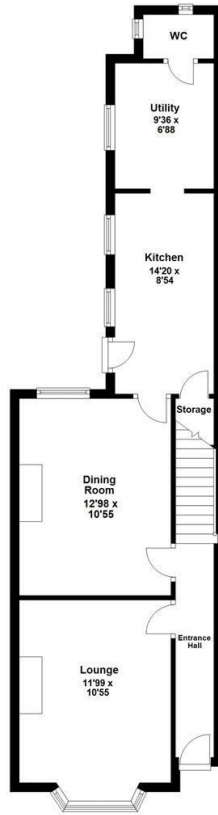
Early viewing is highly recommended to fully appreciate the space, potential, and location this property has to offer.

Don't miss the opportunity to make this house your own.

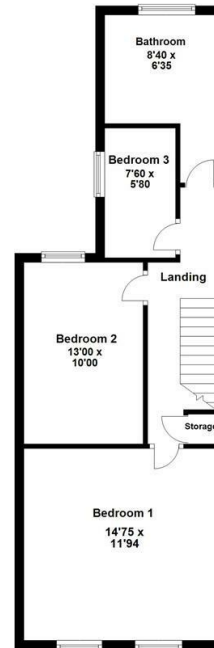
£185,000




Ground Floor



First Floor



Energy Efficiency Rating

	Current	Potential
<i>Very energy efficient - lower running costs</i>		
(92 plus) A		
(81-91) B		
(69-80) C		
(55-68) D		
(39-54) E		
(21-38) F		
(1-20) G		
<i>Not energy efficient - higher running costs</i>		
England & Wales	EU Directive 2002/91/EC	



**Simpson
Ellson**

T: 01536 645960

E: rothwell@simpsonellson.co.uk



01536 645960

rothwell@simpsonellson.co.uk

<https://www.simpsonellson.co.uk>

32 High Street, Rothwell, Northants, NN14 6BQ