



Flat - Purpose Built (EPC Rating: C)

2/2, 96 MILLER STREET, GLASGOW, G1 1DT

Offers over

£169,995

FEATURES

- 1 bed, 1 bath flat
- Open-plan lounge/kitchen
- Double bedroom with storage
- Bathroom with shower
- Large walk-in cupboard
- Central Glasgow location
- Near Queen Street Station
- Close to shops and cafes



SWEET HOME



1 Bedroom Flat - Purpose Built located in Glasgow

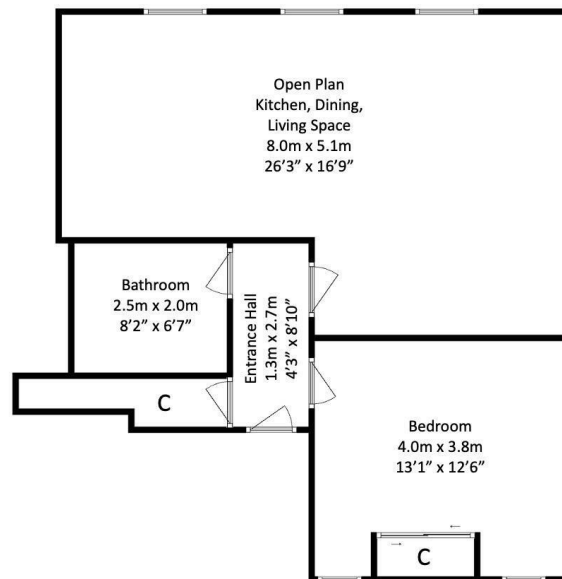
Sweet Home Scotland this delightful to bring to the market this second-floor flat presents an exceptional opportunity for those seeking a vibrant urban lifestyle Nestled in the heart of Glasgow's bustling city centre on Miller Street, . The property boasts an open-plan lounge, dining, and kitchen area, creating a spacious and inviting atmosphere perfect for both relaxation and entertaining.

The double bedroom offers a comfortable retreat, while the bathroom features a convenient shower over the bath, catering to all your needs. Additionally, a large walk-in cupboard provides ample storage space, ensuring that your living area remains tidy and organised.

Living in this apartment means you are surrounded by a plethora of independent cafés, excellent restaurants, and high street shops, making it easy to enjoy the best of Glasgow's culinary and retail offerings. For your everyday needs, you will find supermarkets such as Marks and Spencer Food Hall, Tesco, and Aldi just a stone's throw away.

Transport links are superb, with Queen Street Station only a three-minute walk and Central Station a mere five minutes away, allowing for easy commutes and travel throughout the city and beyond.

This unique and rarely available apartment is perfect for individuals or couples looking to immerse themselves in the vibrant culture and lifestyle that Glasgow has to offer. Don't miss the chance to make this charming flat your new home.



Call us on

01236 677500

sales@sweet-home.co.uk

<https://sweet-home.co.uk/>

Council Tax Band

D

Energy Efficiency Rating		Current	Potential
<i>Very energy efficient - lower running costs</i>			
(92 plus)	A		
(81-91)	B		
(69-80)	C		
(55-68)	D		
(39-54)	E		
(21-38)	F		
(1-20)	G		
<i>Not energy efficient - higher running costs</i>			
Scotland		EU Directive 2002/91/EC	
		75	82

Agents Note: Whilst every care has been taken to prepare these particulars, they are for guidance purposes only. All measurements are approximate and are for general guidance purposes only and whilst every care has been taken to ensure their accuracy, they should not be relied upon and potential buyers are advised to recheck the measurements.

SWEET HOME

