



Apartment 2 60 Little London Road, Sheffield S8 0UH

Saxton Mee

Lettings

Apartment 2 60 Little London

PCM

£1,295 PCM

Apartment 2, 60 Little London Road is a spacious 2-bedroom apartment ideal for working professionals or couples.

The property benefits from a fitted luxury Karl Benz kitchen with integrated appliances, spacious open-plan living and dining space and a private balcony.

The bedrooms are 2 large double bedrooms with high-quality fitted wardrobes.

The master bedroom benefits from a modern ensuite with walk-in shower whilst the family bathroom has a shower over the bath.

Ample street parking is available directly outside the building.

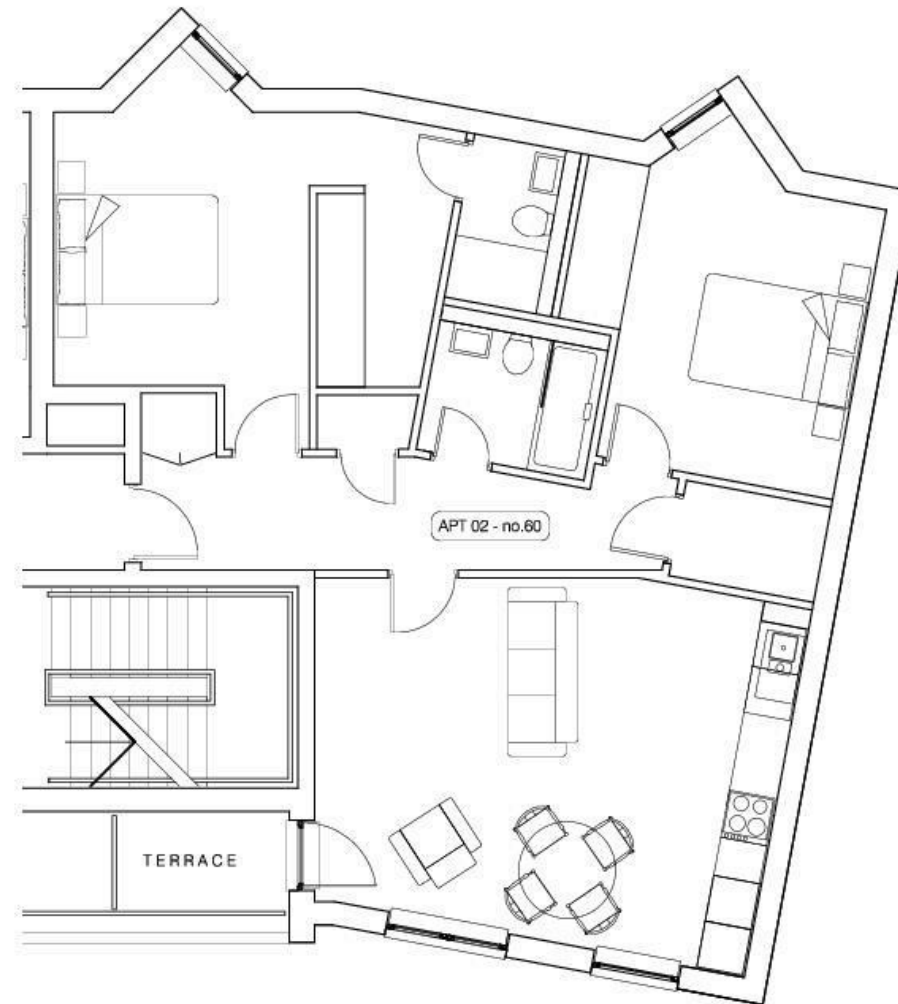
This property is not one to be missed!

Layouts may vary from photos, viewing highly recommended.

- Modern Living
- Karl Benz Kitchen
- Underfloor Heating
- Prime location close to local amenities
- New Development
- Excellent Transport Links
- Private balcony
- Secure door entry system







APARTMENT 02, 60 LITTLE LONDON ROAD, SHEFFIELD.



While we endeavour to make our sales particulars fair, accurate and reliable, they are only a general guide to the property and, accordingly, if there is any point, which is of particular importance to you, please contact the relevant office. The Agents have not tested any apparatus, equipment, fittings or services and so cannot verify they are in working order. The buyer is advised to obtain verification. Please note all the measurement details are approximate and should not be relied upon as exact. All plans, floor plans and maps are for guidance purposes only and are not to scale. Under no circumstances should they be relied upon as exact or for use in planning carpets and other such fixtures, fittings or furnishings. YOUR HOME IS AT RISK IF YOU DO NOT KEEP UP REPAYMENTS ON A MORTGAGE OR OTHER LOAN SECURED ON IT. 'A Life Assurance policy may be requested.' 'Written Quotations of credit terms available on request.'

Banner Cross
T: 0114 268 3241
E: bannercross@saxtonmee.co.uk
www.saxtonmee.co.uk

Hathersage
T: 01433 650009
E: hathersage@saxtonmee.co.uk

Bakewell
T: 01629 815307
E: bakewell@saxtonmee.co.uk

Matlock
T: 01629 828250
E: matlock@saxtonmee.co.uk