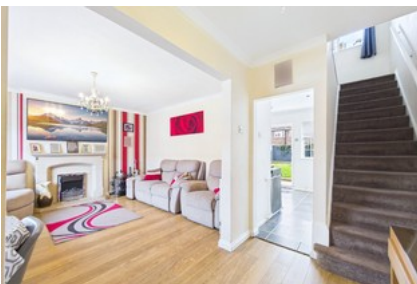




Aveley

South Ockendon



- ✓ *chain Free* - Ideal Family House
- ✓ Three Bedroom - Terraced Home
- ✓ Brick Built Construction
- ✓ Kitchen With Ample Storage
- ✓ Gas Radiator Central Heating
- ✓ Private Rear Garden With Side Access
- ✓ Porch & Driveway For Up To Two Cars
- ✓ Prime Location! Easy Reach Of Well-regarded Schools
- ✓ Easy Access To A13 & M25
- ✓ Epc : C & Concil Tax Band : C

Guide Price **£390,000**

Bedroom  3 Bathroom  1 Reception  1