



Mount Avenue, W5

£650,000

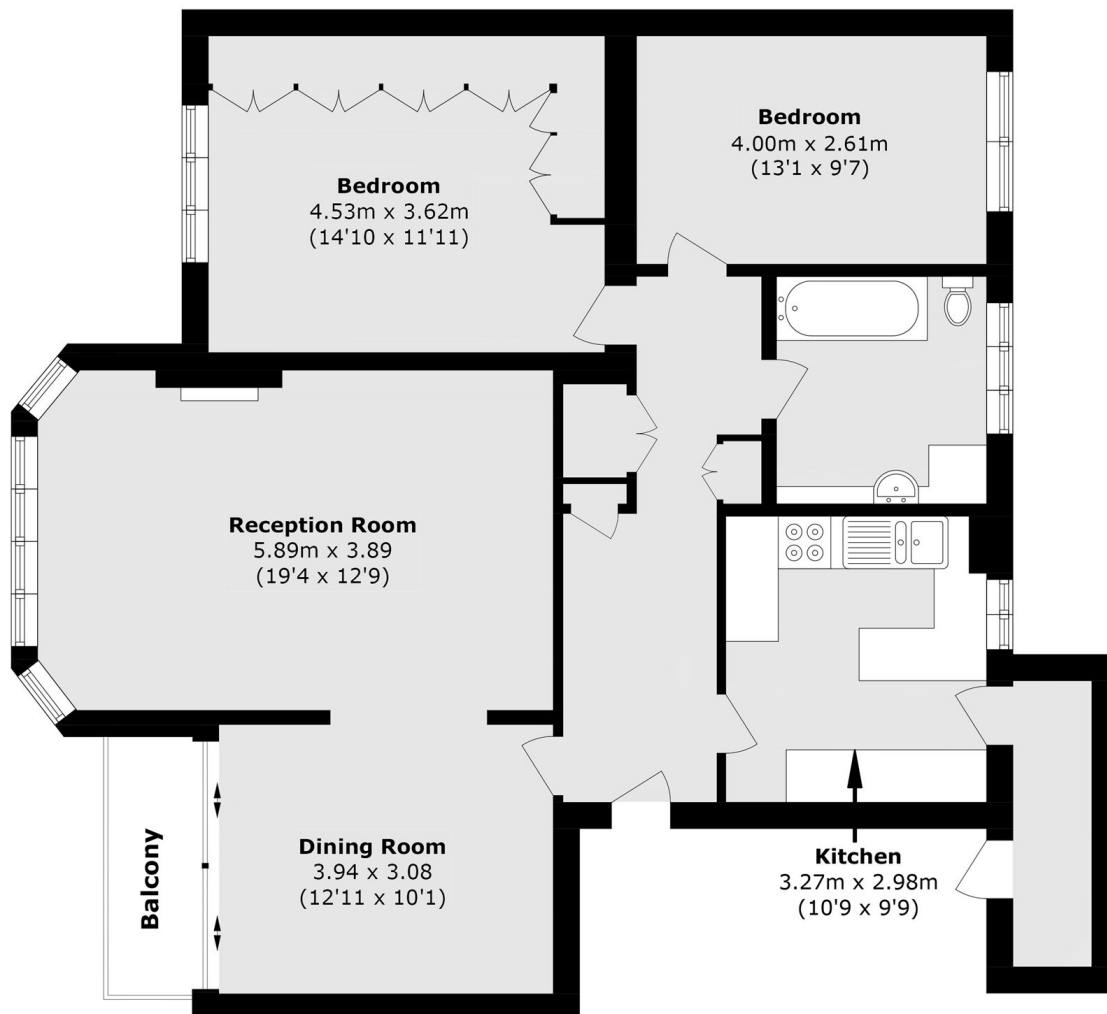
This top floor two double bedroom and two reception room apartment is offered with no onward chain. To the front and rear of the property there are beautiful views with a balcony to the front. There is a separate kitchen, communal gardens and a share of the freehold.

Ideally located close to both Montpelier and St Gregory's primary schools. Ealing Broadway for its wide range of shops, and transport options including Elizabeth, District and Piccadilly lines is approximately three quarters of a mile.

Features

- Two Bedrooms
- Top Floor
- Lift Access
- No Onward Chain
- Share Of Freehold
- Over 1000sq.ft.

Mount Avenue, London, W5



Total area (approx.): 93.7 sq. m (1008.5 sq. ft)
Balcony area (approx.): 2.9 sq. m (31.2 sq. ft)

Dexters

Ealing
2 New Ealing Broadway
London
W5 2NU
Sales
020 8810 0909

Energy Rating: D. We aim to make our particulars both accurate and reliable. However they are not guaranteed; nor do they form part of an offer or contract. If you require clarification on any points then please contact us, especially if you're traveling some distance to view. Please note that appliances and heating systems have not been tested and therefore no warranties can be given as to their good working order.

 **RICS** | Regulated
Estate Agent
and Letting Agent

[dexters.co.uk](https://www.dexters.co.uk)