



TK International
020 7794 8700
www.t-k.co.uk

Residential Sales
Residential Lettings
Property Management

Sales Office:
9 Heath Street
Hampstead
London NW3 6TP
E: sales@t-k.co.uk

Lettings Office:
16-18 Heath Street
Hampstead
London NW3 6TE
E: lettings@t-k.co.uk

tk.international
TK International
TK International

Est.
1998



New End Hampstead Village NW3

A beautifully presented three bedroom apartment set on the third floor of the prestigious Novel House development in the heart of Hampstead, extending to approximately 1,700 sq ft. The apartment offers bright and spacious accommodation throughout, enhanced by high ceilings, floor to ceiling windows, and impressive triple aspect views which flood the property with natural light.

The principal living space comprises a generous reception room with an open plan kitchen and dining area, creating an ideal environment for both entertaining and day to day living. The principal bedroom benefits from a dressing area and en suite bathroom, while the two additional bedrooms are both well proportioned, with one further en suite and a separate family bathroom serving the third.

A substantial private terrace provides far reaching views towards the City skyline and serves as an excellent extension of the internal living space. Finished to a high specification throughout, residents of Novel House benefit from air conditioning, underfloor heating, a 24 hour concierge, residents' gym, secure underground parking, and beautifully maintained communal gardens.

Ideally located in the centre of Hampstead, the apartment is just a short walk from London Underground via Hampstead Underground Station, as well as the area's excellent selection of independent shops, cafés and restaurants. The vast open green spaces of Hampstead Heath are also close by, offering some of London's most sought after outdoor space.

£15,000 Per Month

SOLE AGENT







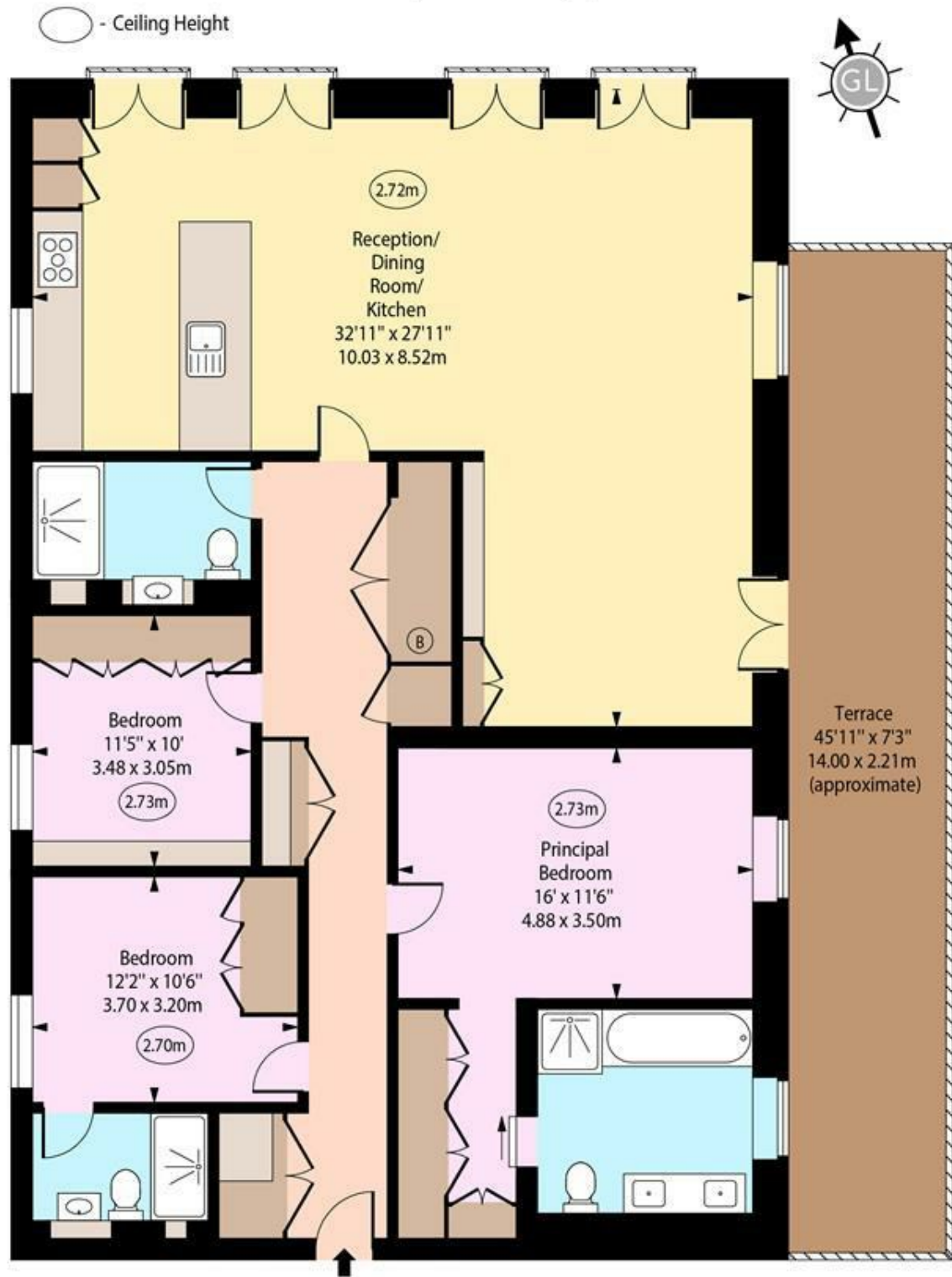








Novel House,
New End Hampstead Village, NW3



Third Floor

Approx Gross Internal Area 1710 Sq Ft - 158.86 Sq M

Every attempt has been made to ensure the accuracy of the floor plan shown.
However, all measurements, fixtures, fittings, and data shown are approximate interpretations and
for illustrative purposes only. Measured according to the RICS. Not To Scale.

www.goldlens.co.uk

Prepared for TK International

Ref. No. 032112J