

**FLAT 4, MAXWELL COURT,  
19 MAXWELL DRIVE, POLLCKSHIELDS,  
G41 5EQ**



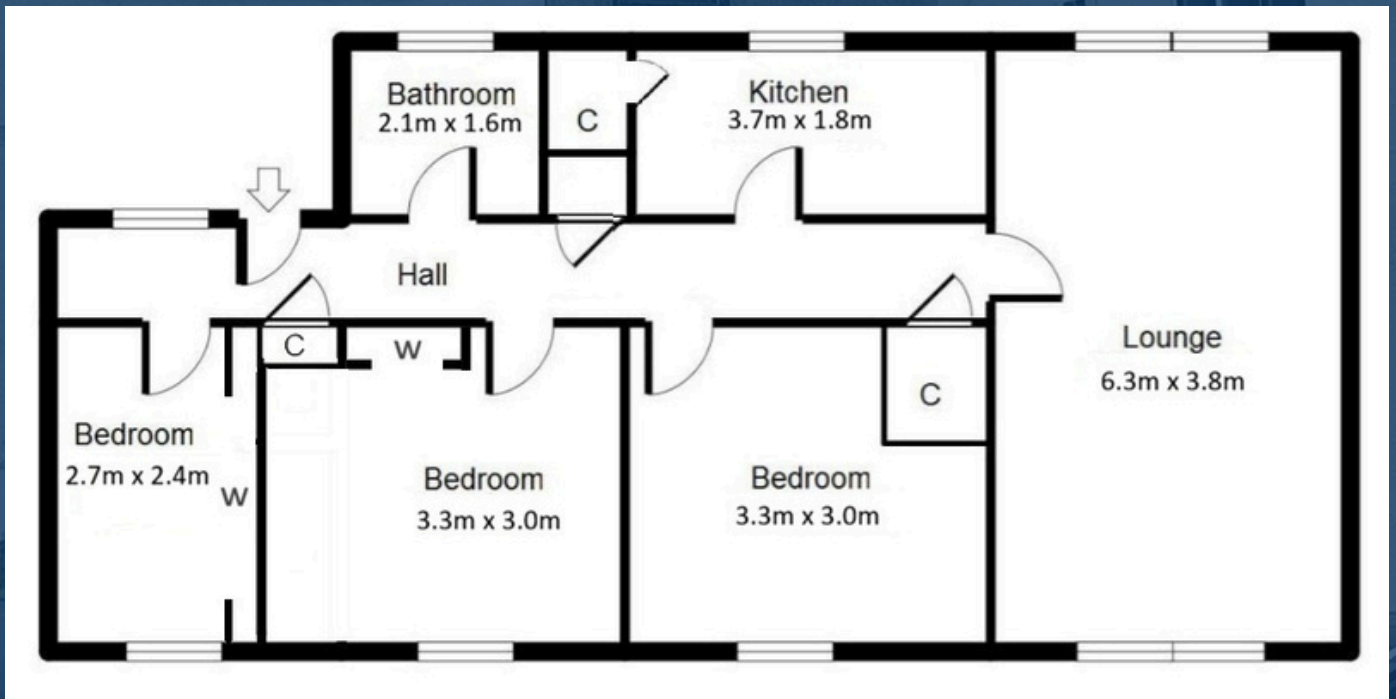
## Description

This first-floor flat in Maxwell Court, Maxwell Drive sits in the heart of Pollokshields — one of Glasgow's most sought-after Southside addresses. The property offers well-proportioned accommodation in need of modernisation, extending to an entrance hallway, large lounge, kitchen, three bedrooms and bathroom, with gas central heating, double glazing and a garage.

Ideally placed for investors or DIY enthusiasts, the area benefits from excellent transport links via Maxwell Park and Pollokshields West stations, with Shawlands and Strathbungo's cafés, restaurants and independent shops nearby. Maxwell Park, Pollok Country Park and the Burrell Collection are all within easy reach.

# PROPERTY MEASUREMENTS

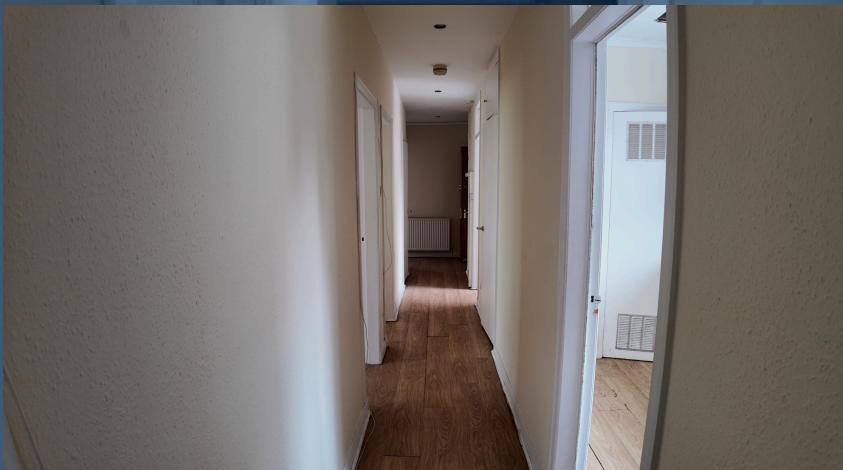
Lounge	6.3m x 3.8m
Kitchen	3.7m x 1.8m
Bedroom 1	3.3m x 3.0m
Bedroom 2	3.3m x 3.0m
Bedroom 3	2.7m x 2.4m
Bathroom	2.1m x 1.6m



# FEATURES

- First Floor Flat
- Sought-after Location
- Gas Central Heating & Double-Glazed
- Garage
- 3 Bedrooms
- Spacious Accommodation
- EPC Rating C







# Keep Property



0141 487 8444



[sales@keepproperty.co.uk](mailto:sales@keepproperty.co.uk)



[keepproperty.co.uk](http://keepproperty.co.uk)



146 West Regent Street,  
Glasgow, G2 2RQ

Disclaimer: These particulars are intended as a guide only and do not constitute any part of an offer or contract. All measurements are approximate.