

Apartment 29, £265,000

(Other charges apply)

RICHMOND
VILLAGES

Part of Bupa



2



1



EPC - C



2 bedroom first floor apartment

Located on the South side of the Bowling Green sheltering in a corner plot, No 29 is a beautiful two bedroom first floor independent living apartment with a small balcony overlooking the bowling green. The accommodation comprises entrance hall with stair-lift up to the first floor, bright and airy living room, fully fitted galley kitchen with French doors leading to a small balcony, main bedroom with en-suite, a second bedroom and a second WC. The apartment is situated close to the main village center and village facilities.

Specification

- Spacious and bright living room with modern remote controlled electric fire with feature surround.
- A modern and stylish fitted kitchen with a range of wall and base units. Integrated fridge/freezer with built in oven and hob. Double French doors opening to small balcony overlooking the Bowling Green.
- Large master bedroom with fitted wardrobes and an en-suite.
- Second bedroom with built-in cupboards.
- Guest wc.
- Entrance hall with large storage cupboard.
- Central heating radiators in all rooms. TV and satellite points*.
- Well stocked flower borders and lawns maintained by the Village Gardeners.
- Allocated parking space for one car.

*Satellite subscription not included.

Important Notice: These particulars are intended to give a fair and substantially correct overall description. Other fees and charges apply, please contact the Village Advisers for further details. Properties are sold on a 125 year lease and this property has 107 years remaining.



01270 629 080

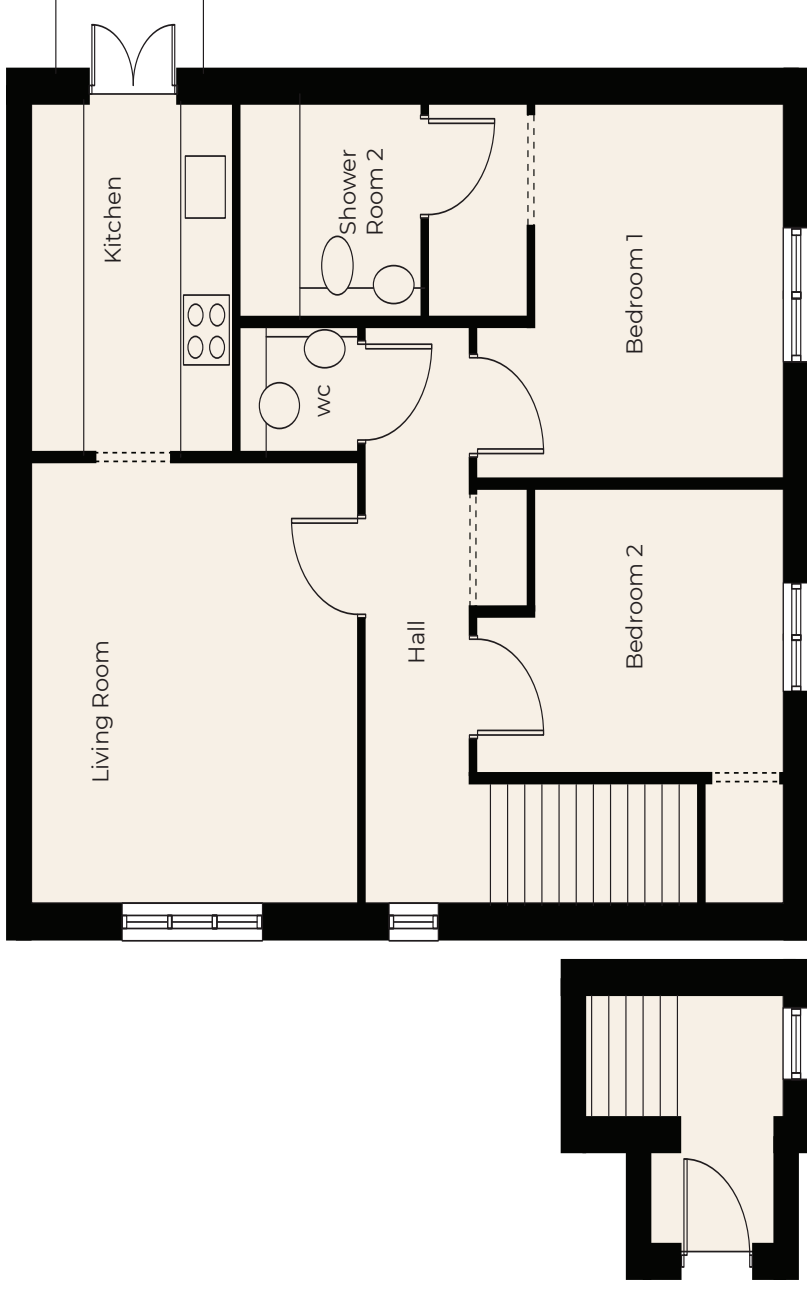
nantwich@richmond-villages.com

Richmond Villages Nantwich,
St Joseph's Way, Nantwich, Cheshire CW5 6LZ

Apartment 29

First Floor | 670ft²

Kitchen	2895mm x 2387mm 9'6" x 7'10"
Living Room	3733mm x 3835mm 12'3" x 12'7"
Bedroom 1	3175mm x 2997mm 10'5" x 9'10"
Bedroom 2	2311mm x 3022mm 7'7" x 9'11"
Bathroom	1803mm x 2133mm 5'11" x 7'
WC	1041mm x 1422mm 3'5" x 4'8"



These particulars are intended to give a fair and substantially correct overall description. Measurements have been taken at 1500mm skimming height. All dimensions are approximate. Bedroom measurements include the wardrobe if applicable. Room measurements include bay windows if applicable. Furniture layout is to give an indicative impression. Although all efforts have been made to ensure its accuracy at time of print dimensions, fixtures, fittings, finishes and specifications are subject to change without notice. The properties are sold unfurnished.

