



**Trueman  
Letting  
Company**

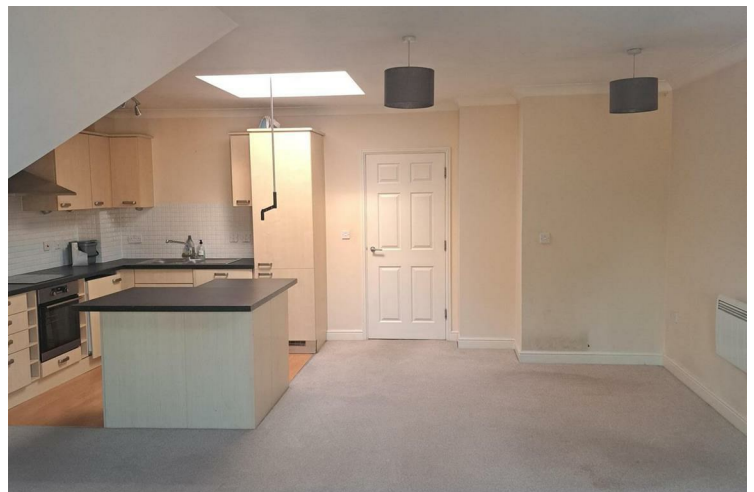


## **70 Dorchester Court 283 London Road Camberley**

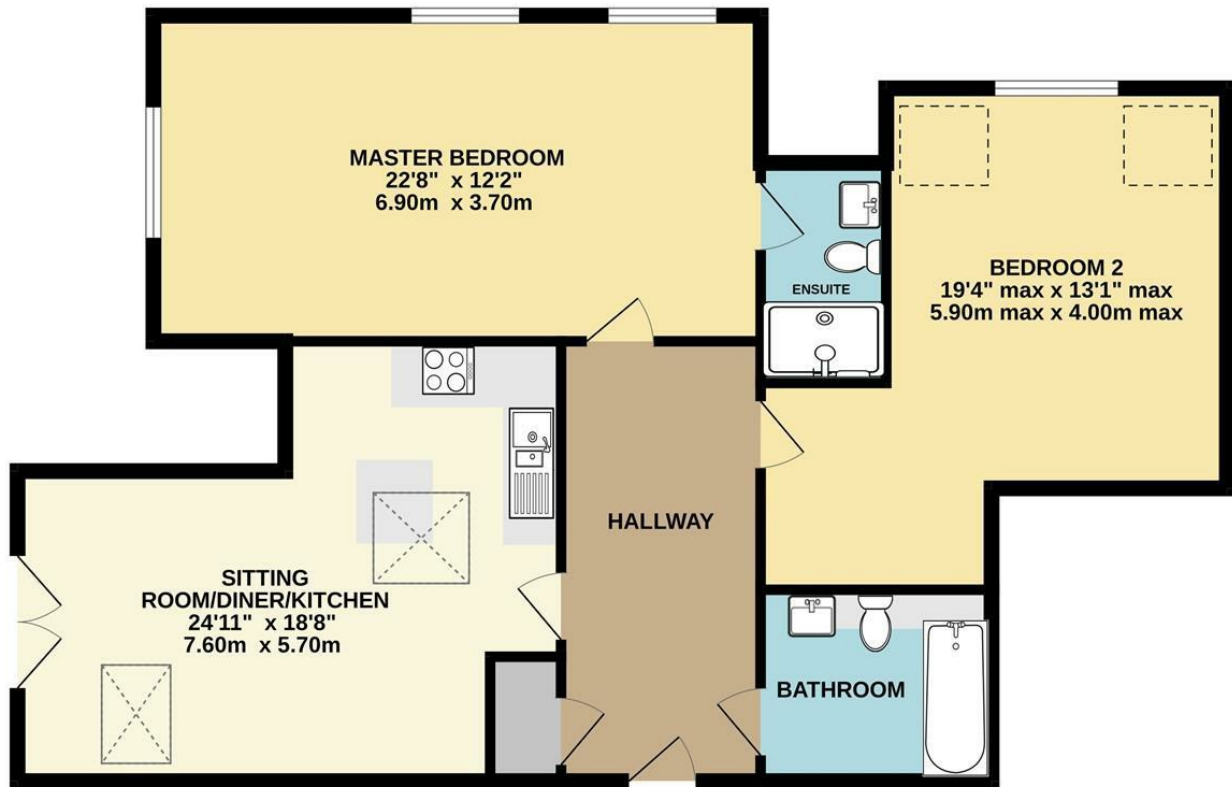
**£1,500**

A modern spacious two double bedroom, two bathroom penthouse apartment in an established development close to the town centre and all its amenities. The property, which benefits from a large open plan lounge/kitchen diner with work island, has a secure underground allocated parking space and security entrance.

EPC D, Council Tax band D




## GROUND FLOOR



Whilst every attempt has been made to ensure the accuracy of the floorplan contained here, measurements of doors, windows, rooms and any other items are approximate and no responsibility is taken for any error, omission or mis-statement. This plan is for illustrative purposes only and should be used as such by any prospective purchaser. The services, systems and appliances shown have not been tested and no guarantee as to their operability or efficiency can be given.  
Made with Metropix ©2024



Energy Efficiency Rating		
	Current	Potential
Very energy efficient - lower running costs		
(92-plus) <b>A</b>	66	76
(81-91) <b>B</b>		
(69-80) <b>C</b>		
(55-68) <b>D</b>		
(39-54) <b>E</b>		
(21-38) <b>F</b>		
(1-20) <b>G</b>		
Not energy efficient - higher running costs		
England & Wales		EU Directive 2002/91/EC 

Agents Note: Whilst every care has been taken to prepare these particulars, they are for guidance purposes only. All measurements are approximate and are for general guidance purposes only and whilst every care has been taken to ensure their accuracy, they should not be relied upon and potential buyers/tenants are advised to recheck the measurements

**Trueman Letting Company Lettings** 01252 711227  
5a Castle Street  
Farnham  
Surrey  
GU9 7HR  
lettings@tlc-farnham.co.uk  
www.tlc-farnham.co.uk

