



WETHERELL

MAYFAIR'S FINEST PROPERTIES



Mount Street, W1K

£4,500 PCM

A luxurious and recently renovated studio apartment finished to the highest standard with views over Mount Street Gardens.

Situated on the ground floor, the apartment comprises a spacious reception room with high ceilings and period features ideal for entertaining with a separate kitchen.

The bedroom is fitted with floor to ceiling storage and a luxury custom headboard with a separate shower room.

Mount Street is one of the worlds premier destinations for luxury retailing and is also home to the five star Connaught hotel and the critically acclaimed Scott's restaurant.



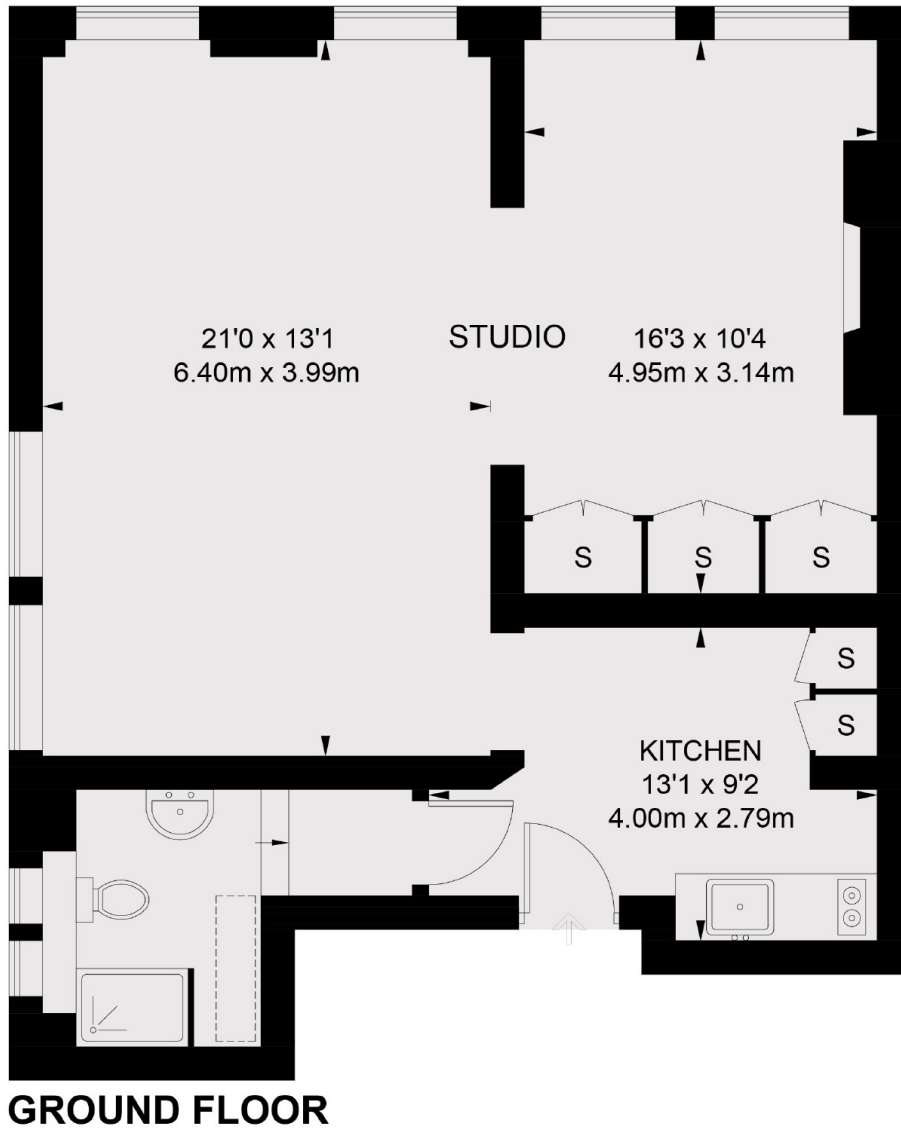
FEATURES

- Mount Street Garden views • Luxury Fixtures & Fittings • Recently Renovated • Separate Kitchen • Modern Bathroom • Ground Floor •



Mount Street,
London, W1K

 = REDUCED HEADROOM BELOW 1.5m / 5'0



TOTAL APPROX. FLOOR AREA 651 SQ. FT. (60.5 SQ. M.)