

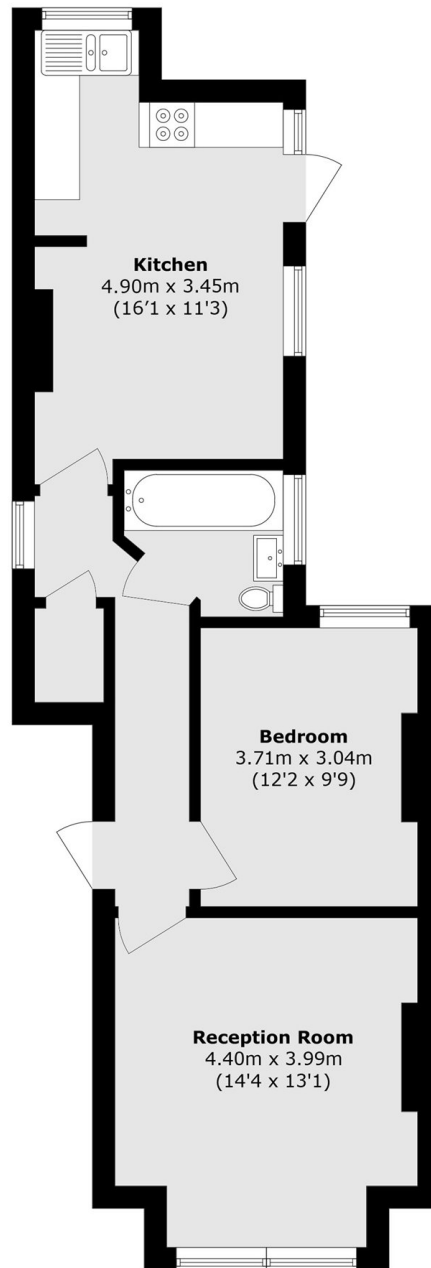


RADBOURNE ROAD, SW12

£2,000 PCM

- Victorian maisonette
- Ground floor
- Large reception room
- Unfurnished
- Good transport links
- Energy rating: C





Total area (approx.): 57.7 sq. m (621.1 sq. ft)

JACKSONS BALHAM

8-11 Balham Station Road,
London, SW12 9SG
Sales: 020 8675 6555
Lettings: 020 8675 6565

Energy Rating: We aim to make our particulars both accurate and reliable. However they are not guaranteed; nor do they form part of an offer or contract. If you require clarification on any points then please contact us, especially if you're traveling some distance to view. Please note that appliances and heating systems have not been tested and therefore no warranties can be given as to their good working order.