



Audit Hall Road, Empingham, Oakham Freehold £550,000

Key Features



- Charming stone character home with high ceilings and period features
- Over 1,800 sq. ft. including loft rooms and outbuildings
- Three spacious double bedrooms, one with en suite WC
- Two generous reception rooms- both with fireplaces
- Bespoke, high quality country kitchen with feature Aga

Nestled within the highly sought after Rutland village of Empingham, this beautifully presented stone-built home offers charm, space and practicality in equal measure. Perfectly positioned between Stamford, Oakham, and the breathtaking Rutland Water, the property enjoys a superb balance of countryside tranquillity and everyday convenience.

Empingham itself is a hugely popular village, offering a welcoming community, highly regarded local surgery, village shop, pub, primary school, and superb transport links - including easy access to the A1 for fast routes north and south. Rutland Water, with its walking trails, sailing, cycling routes and wildlife centres, is just moments away, making this an ideal home for those who love an outdoor lifestyle.



Ground Floor:

The accommodation begins with a welcoming entrance hall leading to the generous reception spaces. The sitting room features a classic fireplace with woodburning stove, exposed stone and timber detail, and a calm, cosy atmosphere. A second dining/living room offers further entertaining space, again centred around a character fireplace and enjoying views across the gardens.

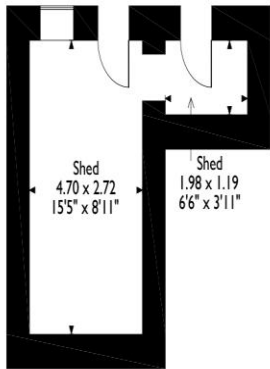
The bespoke fitted kitchen is a standout feature of the home - a stylish country kitchen with solid worktops, quality cabinetry, integrated appliances and a beautiful brick-surround Aga as the focal point. Exposed beams add warmth and charm, while a practical utility room and ground floor WC complete the layout.

First Floor:

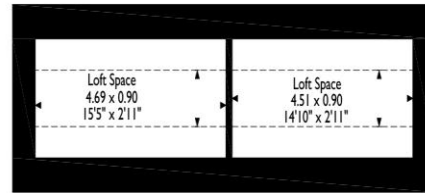
The first floor offers three well-proportioned double bedrooms, each full of character and natural light. The principal bedroom enjoys dual aspect windows and excellent space, while bedroom two benefits from an en suite WC. A beautifully finished family bathroom features a freestanding bathtub and separate shower.



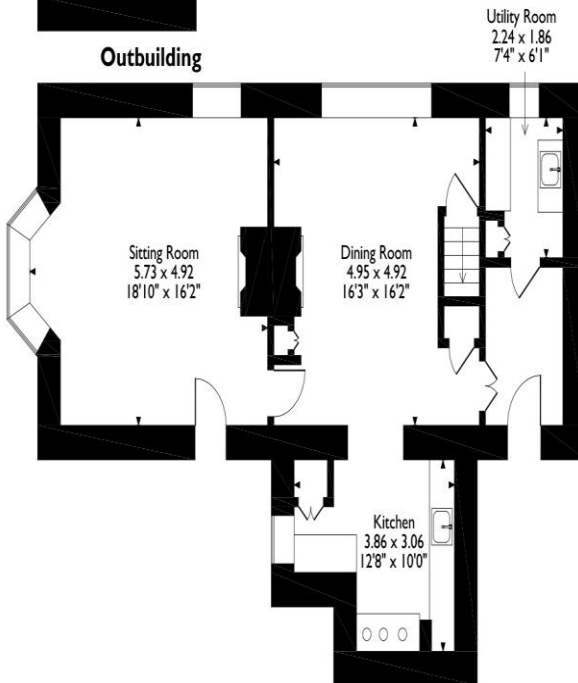
2, Audit Hall Road, Empingham, Oakham
 Approximate Gross Internal Area
 Main House = 152 Sq M/1636 Sq Ft
 Outbuilding = 16 Sq M/172 Sq Ft
 Total = 168 Sq M/1808 Sq Ft



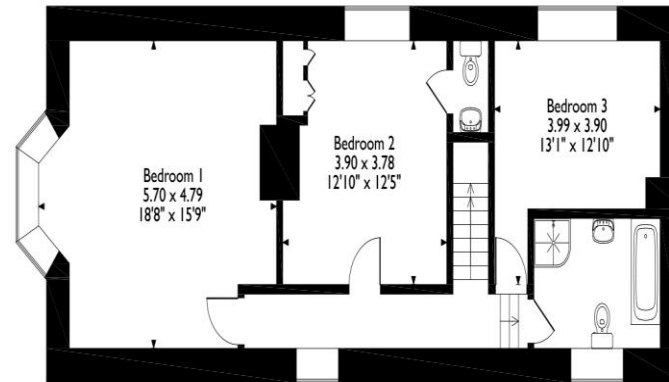
Outbuilding



Second Floor



Ground Floor



First Floor

Please note that the location of doors, windows and other items are approximate and this floorplan is to be used for illustrative purposes only. Unauthorized reproduction is prohibited.

Second Floor:

Above, two Velux lit loft rooms provide superb storage or exciting potential for conversion (subject to relevant permissions). These additional spaces offer valuable flexibility rarely found in homes of this price.

Outside:

Set on a generous plot, the property enjoys a wraparound, private garden, thoughtfully landscaped to include multiple terrace, patio and seating areas - perfect for outdoor dining, relaxing or gardening.

A large driveway provides extensive off-road parking, rarely available in the village. The plot also includes substantial outbuildings, ideal for storage, hobbies, or potential future development.

Altogether, this home offers outstanding value for its size, plot and location - a superb opportunity for buyers seeking character, space, privacy and village living at its best.

EMPINGHAM

Empingham is a picturesque and historic Rutland village set between Stamford and Oakham, positioned at the eastern edge of Rutland Water, one of Europe's largest reservoirs, offering outstanding scenery, outdoor pursuits and wildlife experiences.

Selling your property?

Contact us to arrange a FREE home valuation.

 01780 752136

 38 St. Marys Street, Stamford, Lincolnshire, PE9 2DS

 stamford@hurfords.co.uk

 www.hurfords.co.uk



 SCAN ME



Hurfords is a trading name of Sharman Quinney Holdings Limited which is registered in England and Wales under company number 4174227, Registered Office is Cumbria House, 16-20 Hockliffe Street, Leighton Buzzard, Bedfordshire, LU7 1GN. VAT Registration Number is 500 2481 05.

1: These particulars do not constitute part or all of an offer or contract. 2: The measurements indicated are supplied for guidance only and as such must be considered incorrect. 3: Potential buyers are advised to recheck the measurements before committing to any expense. 4: Hurfords has not tested any apparatus, equipment, fixtures, fittings or services and it is the buyers interests to check the working condition of any appliances. 5: Hurfords has not sought to verify the legal title of the property and buyers must obtain verification from their legal representative. 6: Intending purchasers will be asked to produce identification documentation at a later stage and we would ask your co-operation in order that there will be no delay in agreeing the sale. Ref: SFD204443 - 0006

