



Wheel House

1 Burrells Wharf Square, E14

Offers in excess of £425,000

A two bedroom, two bathroom apartment found within the Wheel House Building in this popular riverside development Burrells Wharf Square, benefiting from concierge, leisure facilities and parking.

CHESTERTONS



Wheel House

1 Burrells Wharf Square, E14

- Two Bedroom Apartment
- Two Bathrooms
- Raised Ground Floor
- Parking Space
- 24 hour Concierge
- Swimming Pool, Gym
- Private Balcony
- Communal gardens



Two bedroom two bathroom apartment located within the Wheel House Building in this popular riverside development. The light and airy property is located on the raised ground level and offers 743 sq ft of internal space. The heating is communal and the cost is included within the service charge.

Burrell's Wharf features a community feel absent in many developments in the area. The development is centred around a communal courtyard and is located next to the River Thames. On-site facilities are excellent: well-staffed site office (24 hour portorage), a residents' gym, sauna and swimming pool.

Burrell's Wharf is located approximately 600m from Mudchute DLR station and within 100m of Mast House Terrace pier for Thames Clipper service for easy access to Canary Wharf, The O2 Centre & central London.

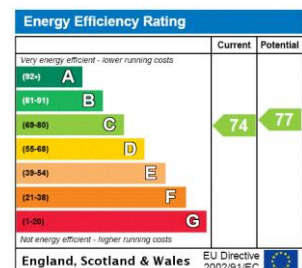
Tenure: Share of Freehold

Service Charge: £8,850 pa. (£5,672.72 Service Charge + £3,177.60 Reserve Fund Contributions. Heating is included in the service charge)

Ground Rent: £50 Doubles every 25 years in accordance with the lease

Local Authority: Tower Hamlets

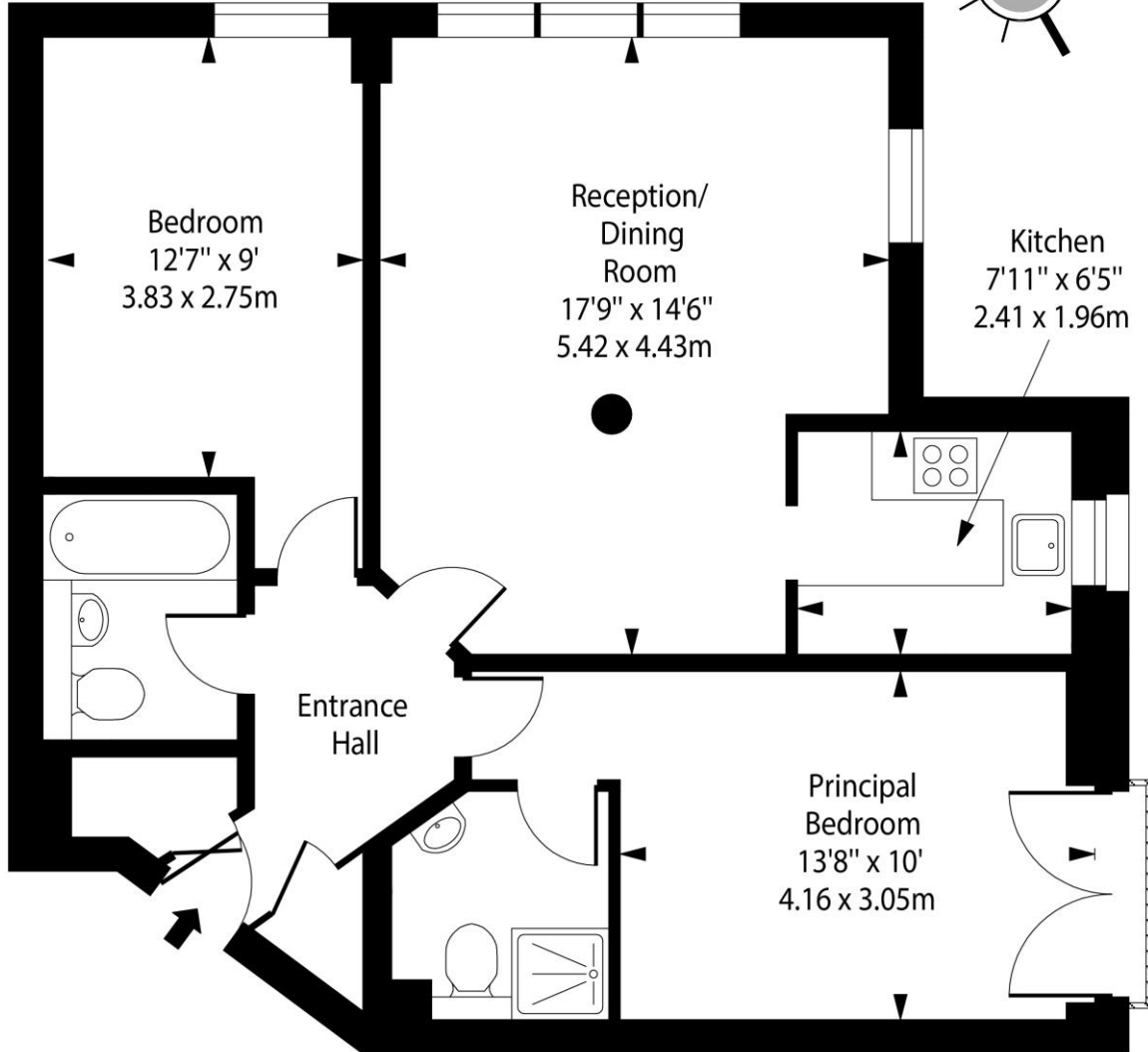
Council Tax Band: E



Chestertons Canary Wharf & Greenwich Sales

Harbour Island
 28 Harbour Exchange Square
 London
 E14 9GE
 canarywharf@chestertons.co.uk
 020 7510 8300
 chestertons.co.uk

Wheel House, Burrells Wharf Square, E14



Ground Floor

Approx Gross Internal Area 743 Sq Ft - 69.02 Sq M

For Illustration Purposes Only - Not To Scale

www.goldlens.co.uk

Ref. No. 021944MS

