



Reigate Road, Betchworth

Guide Price £450,000





Situated in a community-oriented area, this home is surrounded by open green spaces and is close to local schools, country pubs, and scenic countryside walks. With no onward chain, this property is ready for you to make it your own.





Situated on the edge of the picturesque village of Brockham, this delightful semi-detached house presents an excellent opportunity for families seeking a tranquil lifestyle. With two spacious double bedrooms, a single bedroom and a well-appointed bathroom, this property is designed for comfort and convenience. The heart of the home is a bright and airy living room that seamlessly connects to a separate kitchen and dining area, providing a perfect setting for family gatherings and entertaining.

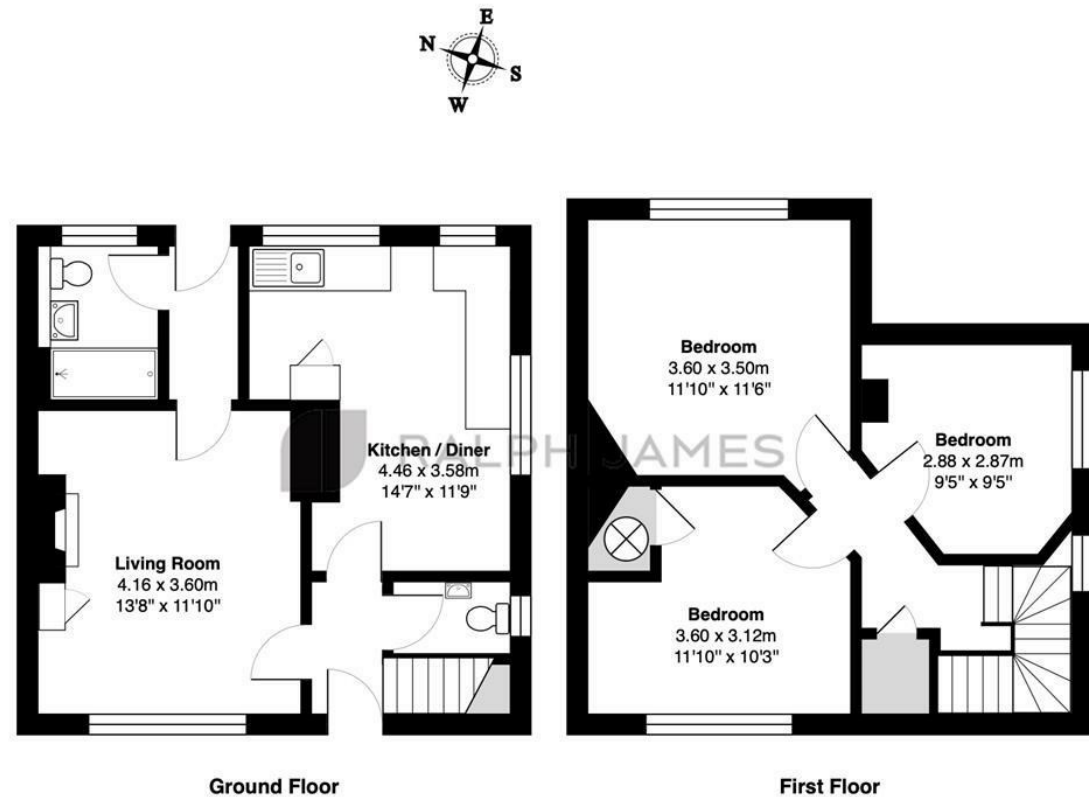
The ground floor also features a family bathroom and an additional WC, enhancing the practicality of the living space. Ascending to the first floor, you will find three generously sized bedrooms, each offering lovely views that invite the beauty of the surrounding countryside indoors.

The exterior of the property is equally impressive, boasting a generous garden that wraps around the front, side, and rear. This private outdoor space is a true highlight, complete with stunning vistas towards the Surrey Hills and Box Hill. It offers a peaceful retreat for family life and is ideal for outdoor entertaining. Additionally, a gate provides direct access to footpaths leading to Box Hill, perfect for those who enjoy nature walks.

Communal parking adds to the convenience of this charming residence. Embrace the relaxed village lifestyle in this wonderful home, where comfort and community come together beautifully.

Need to know

- Three bedrooms
- Spacious living room
- Separate kitchen/dining
- Private rear garden
- Lovely Surrey Hills views
- Direct footpath access
- No onward chain
- Communal parking
- Village lifestyle
- Renovation opportunity



Puddenhole Cottages, Reigate Road, Brockham

Total Area: 81.5 m² ... 877 ft²

FOR ILLUSTRATIVE PURPOSES ONLY.

Whilst every attempt has been made to ensure the accuracy of the floor plan shown, all measurements, positioning, fixtures, features, fittings and any other data shown are an approximate interpretation for illustrative purposes only and are not to scale.

No responsibility is taken for any error, omission, miss-statement or use of data shown.

The above statement applies to both 'Still Moving London LTD' and the Company or individual displaying this floor plan.

Unauthorised reproduction prohibited.

Â© Still Moving London LTD (www.stillmoving.london)



Interested?

dorking@ralphjames.co.uk
01306 284555

ralphjames.co.uk