



WORPLE ROAD, SW19

£2,000 per month

One bedroom
Fitted kitchen
Balcony
Gated development
24-hour porter
Energy rating: b

@marshandparsons
marshandparsons.co.uk

MARSH &
PARSONS



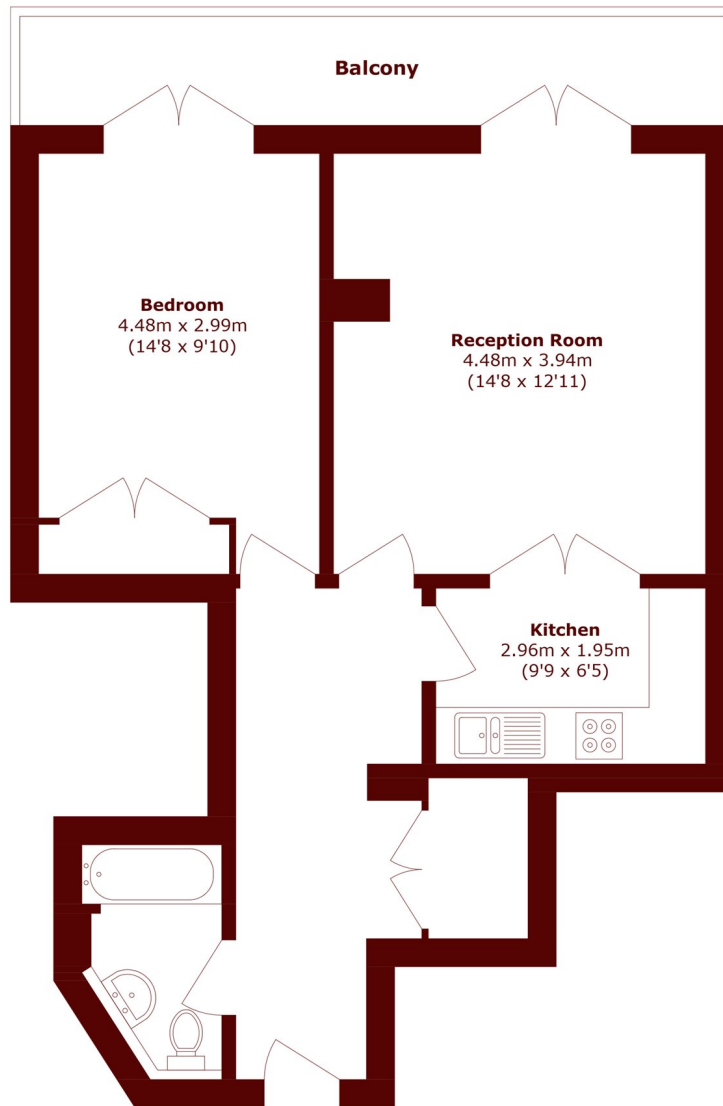
ABOUT THE PROPERTY

A one bedroom apartment in a gated development with a 24-hour porter offering a reception room with doors to a private balcony, fitted kitchen, bedroom with built-in wardrobes and family bathroom.

Located moments from Wimbledon station and all the amenities of the town centre.



STEP INSIDE WORPLE ROAD



Total area (approx.): 53.4 sq. m (574.7 sq. ft)

Balcony area (approx.): 8.4 sq. m (90.4 sq. ft)

Wimbledon
020 8879 6661

Energy Rating: B We aim to make our particulars both accurate and reliable. However, they are not guaranteed; nor do they form part of an offer or contract. If you require clarification on any points then please contact us, especially if you're traveling some distance to view. Please note that appliances and heating systems have not been tested and therefore no warranties can be given as to their good working order

MARSH &
PARSONS