



Oxford Road South, W4

£8,500 Per week

An impressive five bedroom detached double fronted family home. The property offers a large reception room, a separate kitchen/diner, a utility room, garage, a sizeable garden and off-street parking.

Located within half a mile of Gunnersbury station, Chiswick High Road and associated bus links, shops and restaurants. The property is also in the catchment of Strand on the Green School and close to Chiswick station.

Features

- Off-Street Parking
- Separate Utility Room
- Three Bathrooms
- Five Bedrooms
- Detached
- Double Width Plot



Oxford Road South, W4

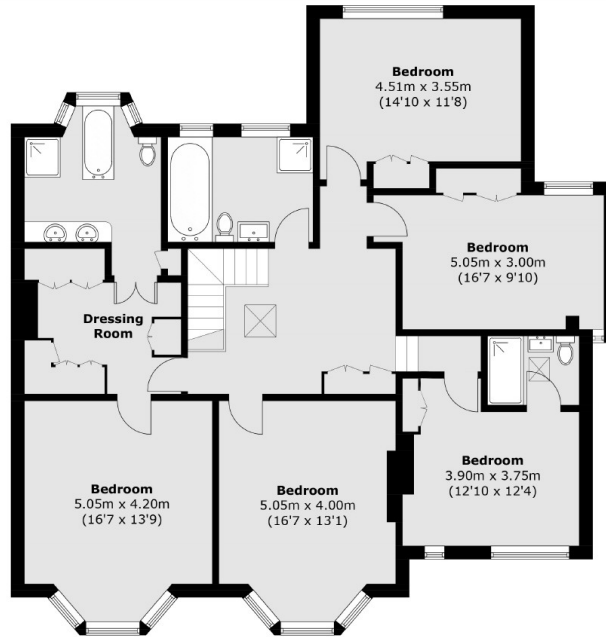
On entry to the house, you are welcomed into a large kitchen dining room with wide sliding doors leading out into a landscaped garden. The ground floor offers a spacious double-bay window reception room, a utility room, a spacious garage, W/C and an office.

The first floor has a feature staircase that leads onto a large landing fitted that has storage and plenty of natural light. There are five large double bedrooms and a family bathroom on this floor. Two of the five bedrooms have en-suite bathrooms.

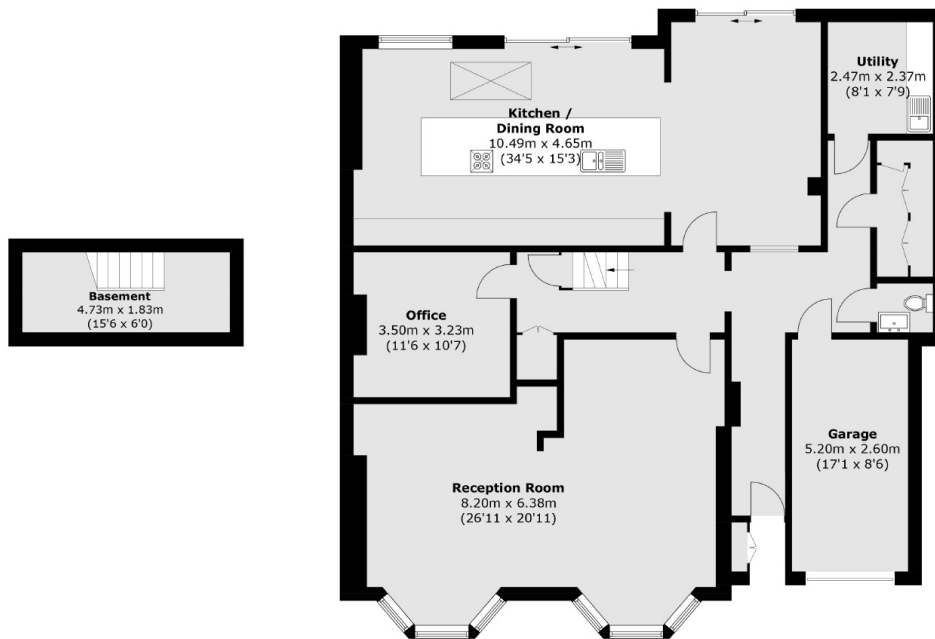
The master suite is complete with an en-suite and a large walk-in wardrobe. The property also benefits from a storage basement, leaving further potential for development into more usable space.



Oxford Road South, London, W4

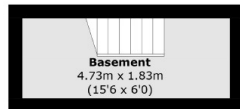


First Floor



Basement

Ground Floor



Total area (approx.): 302.7 sq. m (3,258.1 sq. ft)